

# PDCD2L Monoclonal antibody

Catalog Number: 68249-1-Ig

## Basic Information

Catalog Number:

68249-1-Ig

Size:

1000 µg/ml

Source:

Mouse

Isotype:

IgG1

Immunogen Catalog Number:

AG30807

GenBank Accession Number:

BC006146

GeneID (NCBI):

84306

UNIPROT ID:

Q9BRP1

Full Name:

programmed cell death 2-like

Calculated MW:

358 aa, 39 kDa

Observed MW:

39 kDa

Purification Method:

Protein G purification

CloneNo.:

2G12C4

Recommended Dilutions:

WB 1:5000-1:50000

## Applications

Tested Applications:

WB, ELISA

Species Specificity:

Human

Positive Controls:

WB : A549 cells, LNCaP cells, HCT 116 cells, HeLa cells, K-562 cells, HepG2 cells

## Background Information

PDCD2L was aberrantly expressed in multiple types of human cancers, and associated with clinical stage and molecular subtype and PDCD2L could be served as a biomarker of CRC (PMID: 35216602).

## Storage

Storage:

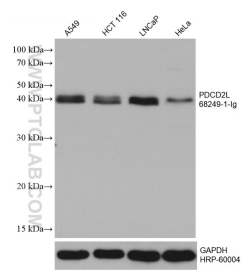
Store at -20°C. Stable for one year after shipment.

Storage Buffer:

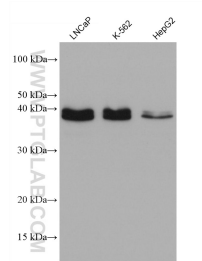
PBS with 0.02% sodium azide and 50% glycerol pH 7.3.

Aliquoting is unnecessary for -20°C storage

## Selected Validation Data



A549 cells were subjected to SDS PAGE followed by western blot with 68249-1-Ig (PDCD2L antibody) at dilution of 1:10000 incubated at room temperature for 1.5 hours. The membrane was stripped and reblotted with HRP-conjugated GAPDH Monoclonal antibody (HRP-60004) as loading control.



Various lysates were subjected to SDS PAGE followed by western blot with 68249-1-Ig (PDCD2L antibody) at dilution of 1:5000 incubated at room temperature for 1.5 hours.