

GLO1 Monoclonal antibody

Catalog Number: 68242-1-Ig

Basic Information

Catalog Number:

68242-1-Ig

Size:

1000 µg/ml

Source:

Mouse

Isotype:

IgG2a

Immunogen Catalog Number:

AG7314

GenBank Accession Number:

BC001741

GeneID (NCBI):

2739

UNIPROT ID:

Q04760

Full Name:

glyoxalase I

Calculated MW:

21 kDa

Observed MW:

21-25 kDa

Purification Method:

Protein A purification

CloneNo.:

1B7A8

Recommended Dilutions:

WB 1:1000-1:6000

IF/ICC 1:200-1:800

Applications

Tested Applications:

WB, IF/ICC, FC (Intra), ELISA

Species Specificity:

human, mouse, rat

Positive Controls:

WB : HEK-293 cells, LNCaP cells, Jurkat cells, HepG2 cells, K-562 cells, HSC-T6 cells

IF/ICC : HeLa cells,

Background Information

Glo1 (glyoxalase I) is a cytosolic protein expressed in all mammalian cells. Its physiological function is the detoxification of MG (methylglyoxal), which is a potent precursor of AGEs (advanced glycation end-products). Glo1 is known to play a role in many diseases including diabetes mellitus, Alzheimer's disease, and cancer.

Storage

Storage:

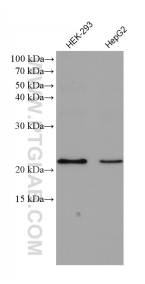
Store at -20°C. Stable for one year after shipment.

Storage Buffer:

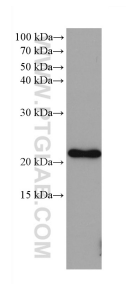
PBS with 0.02% sodium azide and 50% glycerol pH 7.3.

Aliquoting is unnecessary for -20°C storage

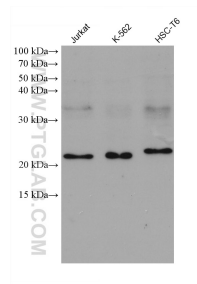
Selected Validation Data



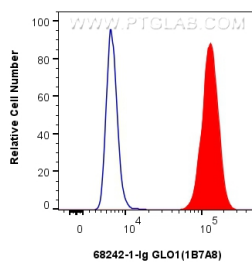
Various lysates were subjected to SDS PAGE followed by western blot with 68242-1-Ig (GLO1 antibody) at dilution of 1:3000 incubated at room temperature for 1.5 hours.



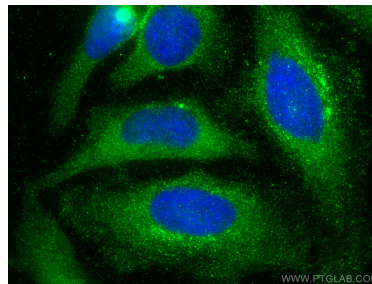
LNCaP cells were subjected to SDS PAGE followed by western blot with 68242-1-Ig (GLO1 antibody) at dilution of 1:3000 incubated at room temperature for 1.5 hours.



Various lysates were subjected to SDS PAGE followed by western blot with 68242-1-Ig (GLO1 antibody) at dilution of 1:3000 incubated at room temperature for 1.5 hours.



1×10^6 HeLa cells were intracellularly stained with 0.4 μ g GLO1 Monoclonal antibody (68242-1-Ig, Clone:1B7A8) and CoraLite488-conjugated Donkey Anti-Mouse IgG(H+L)(SA00013-5)(red), or 0.4 μ g Mouse IgG2a Isotype Control (C1.18.4) (65208-1-Ig, Clone: C1.18.4) (blue). Cells were fixed with 4% PFA and permeabilized with Flow Cytometry Perm Buffer (PF00011-C).



Immunofluorescent analysis of (-20°C Methanol) fixed HeLa cells using GLO1 antibody (68242-1-Ig, Clone: 1B7A8) at dilution of 1:400 and CoraLite® 488-Conjugated AffiniPure Goat Anti-Mouse IgG(H+L).