

PSMA2 Monoclonal antibody

Catalog Number: 68240-1-Ig

Basic Information

Catalog Number:

68240-1-Ig

Size:

1000 µg/ml

Source:

Mouse

Isotype:

IgG1

Immunogen Catalog Number:

AG5837

GenBank Accession Number:

BC047697

GeneID (NCBI):

5683

UNIPROT ID:

P25787

Full Name:

proteasome (prosome, macropain)
subunit, alpha type, 2

Calculated MW:

26 kDa

Observed MW:

26 kDa

Purification Method:

Protein G purification

CloneNo.:

2H4A10

Recommended Dilutions:

WB 1:1000-1:4000

IHC 1:50-1:500

Applications

Tested Applications:

IHC, WB, ELISA

Species Specificity:

Human, mouse, pig, rat

**Note-IHC: suggested antigen retrieval with
TE buffer pH 9.0; (*) Alternatively, antigen
retrieval may be performed with citrate
buffer pH 6.0**

Positive Controls:

WB : U2OS cells, A431 cells, HEK-293 cells, HepG2
cells, HSC-T6 cells, NIH/3T3 cells, pig heart tissue, rat
heart tissue, mouse heart tissue

IHC : human cervical cancer tissue,

Background Information

PSMA2 (Proteasome subunit alpha type-2) is the essential subunit that contributes to the complete assembly of 20S proteasome complex, involved in the proteolytic degradation of most intracellular proteins. It is required in spermatogenesis and generation of a subset of MHC class I-presented antigenic peptides (PMID: 34711951, PMID: 27342858). Dysregulation of PSMA2 degradation leads to tumorigenesis including cervical cancer (PMID:33684886).

Storage

Storage:

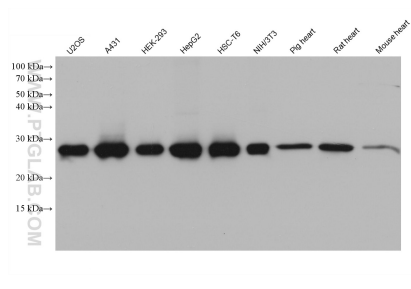
Store at -20°C. Stable for one year after shipment.

Storage Buffer:

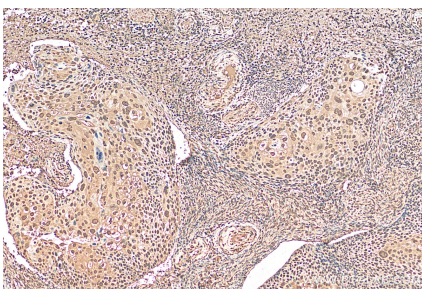
PBS with 0.02% sodium azide and 50% glycerol pH 7.3.

Aliquoting is unnecessary for -20°C storage

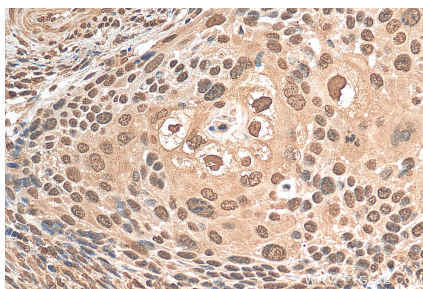
Selected Validation Data



Various lysates were subjected to SDS PAGE followed by western blot with 68240-1-Ig (PSMA2 antibody) at dilution of 1:2000 incubated at room temperature for 1.5 hours.



Immunohistochemical analysis of paraffin-embedded human cervical cancer tissue slide using 68240-1-Ig (PSMA2 antibody) at dilution of 1:200 (under 10x lens). Heat mediated antigen retrieval with Tris-EDTA buffer (pH 9.0).



Immunohistochemical analysis of paraffin-embedded human cervical cancer tissue slide using 68240-1-Ig (PSMA2 antibody) at dilution of 1:200 (under 40x lens). Heat mediated antigen retrieval with Tris-EDTA buffer (pH 9.0).