

For Research Use Only

# ALDH2 Monoclonal antibody, PBS Only



Catalog Number: 68237-1-PBS

Featured Product

## Basic Information

Catalog Number:

68237-1-PBS

Size:

1 mg/ml

Source:

Mouse

Isotype:

IgG2a

Immunogen Catalog Number:

AG7463

GenBank Accession Number:

BC002967

GeneID (NCBI):

217

UNIPROT ID:

P05091

Full Name:

aldehyde dehydrogenase 2 family (mitochondrial)

Calculated MW:

56 kDa

Observed MW:

50-55 kDa

Purification Method:

Protein A purification

CloneNo.:

2G10F4

## Applications

Tested Applications:

WB, Indirect ELISA

Species Specificity:

Human, Mouse, Rat, Rabbit, Pig

## Background Information

Acetaldehyde dehydrogenase is the next enzyme after alcohol dehydrogenase in the major pathway of alcohol metabolism. It mediates NADP<sup>+</sup>-dependent oxidation of aldehydes into acids during detoxification of alcohol-derived acetaldehyde; lipid peroxidation; and metabolism of corticosteroids, biogenic amines and neurotransmitters. Genetic variation in ALDH2 is responsible for individual differences in responses to drinking alcohol. Thus, the absence of this enzyme is linked to alcohol intolerance and a reduced risk for alcoholism-related liver disease.

## Storage

Storage:

Store at -80°C.

The product is shipped with ice packs. Upon receipt, store it immediately at -80°C

Storage Buffer:

PBS Only

For technical support and original validation data for this product please contact:

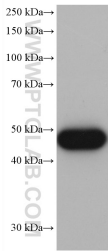
T: 4006900926

E: [Proteintech-CN@ptglab.com](mailto:Proteintech-CN@ptglab.com)

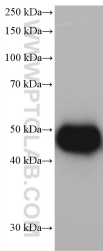
W: [ptgcn.com](http://ptgcn.com)

This product is exclusively available under Proteintech Group brand and is not available to purchase from any other manufacturer.

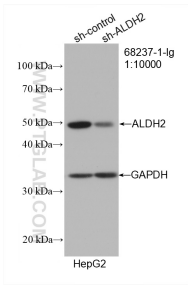
Selected Validation Data



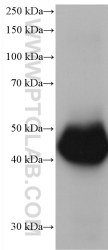
mouse liver tissue were subjected to SDS PAGE followed by western blot with 68237-1-Ig (ALDH2 antibody) at dilution of 1:20000 incubated at room temperature for 1.5 hours. This data was developed using the same antibody clone with 68237-1-PBS in a different storage buffer formulation.



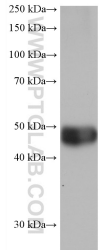
pig liver tissue were subjected to SDS PAGE followed by western blot with 68237-1-Ig (ALDH2 antibody) at dilution of 1:20000 incubated at room temperature for 1.5 hours. This data was developed using the same antibody clone with 68237-1-PBS in a different storage buffer formulation.



WB result of ALDH2 antibody (68237-1-Ig; 1:10000; incubated at room temperature for 1.5 hours) with sh-Control and sh-ALDH2 transfected HepG2 cells. This data was developed using the same antibody clone with 68237-1-PBS in a different storage buffer formulation.



rabbit liver tissue were subjected to SDS PAGE followed by western blot with 68237-1-Ig (ALDH2 antibody) at dilution of 1:20000 incubated at room temperature for 1.5 hours. This data was developed using the same antibody clone with 68237-1-PBS in a different storage buffer formulation.



rat liver tissue were subjected to SDS PAGE followed by western blot with 68237-1-Ig (ALDH2 antibody) at dilution of 1:20000 incubated at room temperature for 1.5 hours. This data was developed using the same antibody clone with 68237-1-PBS in a different storage buffer formulation.