

KIAA1429 Monoclonal antibody

Catalog Number: 68235-1-Ig

Basic Information

Catalog Number:

68235-1-Ig

Source:

Mouse

Isotype:

IgG1

Immunogen Catalog Number:

AG22449

GenBank Accession Number:

BC113380

GeneID (NCBI):

25962

UNIPROT ID:

Q69YN4

Full Name:

KIAA1429

Calculated MW:

1812 aa, 202 kDa

Observed MW:

200-210 kDa

Purification Method:

Protein G purification

CloneNo.:

3F1A4

Recommended Dilutions:

WB: 1:5000-1:50000

IHC: 1:400-1:1600

IF/ICC: 1:400-1:1600

FC (Intra): 0.40 ug per 10⁶ cells in a 100 µl suspension

Applications

Tested Applications:

WB, IHC, IF/ICC, FC (Intra), ELISA

Species Specificity:

human, mouse

Note-IHC: suggested antigen retrieval with TE buffer pH 9.0; (*) Alternatively, antigen retrieval may be performed with citrate buffer pH 6.0

Positive Controls:

WB: LNCaP cells, NIH/3T3 cells, HeLa cells, HepG2 cells, HEK-293 cells, Jurkat cells, K-562 cells, 4T1 cells

IHC: human colon cancer tissue,

IF/ICC: SW480 cells,

FC (Intra): MCF-7 cells,

Background Information

VIRMA (KIAA1429) is a key component of m6A methyltransferase (writer) complex that include METTL3, METTL14, WTAP, VIRMA, HAKAI, ZC3H13, and RBM15. VIRMA mediates methylation in the 3'UTR and around the stop codon, thus affecting alternative polyadenylation. VIRMA has been reported to act as an oncogenic factor in breast cancer and liver cancer. KIAA1429 exhibits differential nuclear and cytoplasmic distribution in colorectal cancer samples, and high cytoplasmic expression of KIAA1429 is associated with poor response to chemotherapy. BRAF-mediated phosphorylation of KIAA1429 facilitates its aggregation in the cytoplasm. Furthermore, cytoplasmic KIAA1429 promotes WNT pathway activation by binding and stabilizing FZD7, thereby further enhancing cancer stemness and oxaliplatin resistance (PMID: 40611274).

Storage

Storage:

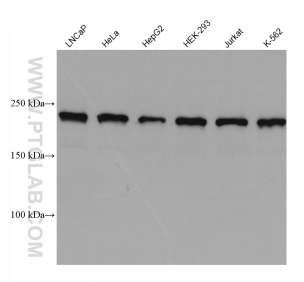
Store at -20°C. Stable for one year after shipment.

Storage Buffer:

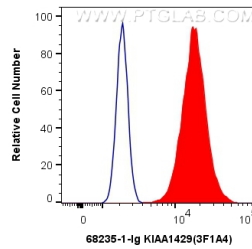
PBS with 0.02% sodium azide and 50% glycerol, pH7.3

Aliquoting is unnecessary for -20°C storage

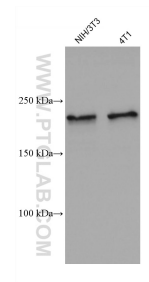
Selected Validation Data



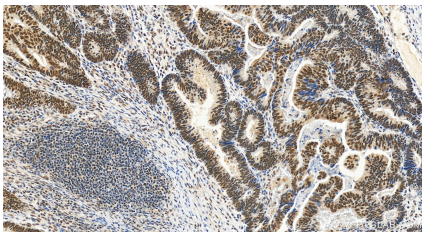
Various lysates were subjected to SDS PAGE followed by western blot with 68235-1-Ig (KIAA1429 antibody) at dilution of 1:20000 incubated at room temperature for 1.5 hours.



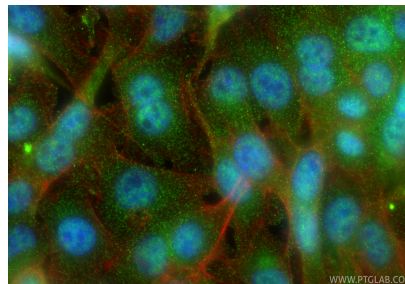
1X10⁶ MCF-7 cells were intracellularly stained with 0.4 ug Anti-Human KIAA1429 (68235-1-Ig, Clone:3F1A4) and CoraLite®488-Conjugated AffiniPure Goat Anti-Mouse IgG(H+L) at dilution 1:1000 (red), or 0.4 ug Control Antibody. Cells were fixed with 4% PFA and permeabilized with Flow Cytometry Perm Buffer.



Various lysates were subjected to SDS PAGE followed by western blot with 68235-1-Ig (KIAA1429 antibody) at dilution of 1:20000 incubated at room temperature for 1.5 hours.



Immunohistochemical analysis of paraffin-embedded human colon cancer tissue slide using 68235-1-Ig (KIAA1429 antibody) at dilution of 1:800 (under 20x lens). Heat mediated antigen retrieval with Tris-EDTA buffer (pH 9.0).



Immunofluorescent analysis of (4% PFA) fixed SW480 cells using KIAA1429 antibody (68235-1-Ig, Clone: 3F1A4) at dilution of 1:800 and CoraLite®488-Conjugated Goat Anti-Mouse IgG(H+L) (SA00013-1), CL594-phalloidin (red).