

For Research Use Only

# NKRF Monoclonal antibody, PBS Only



Catalog Number: 68230-1-PBS

Featured Product

## Basic Information

Catalog Number:

68230-1-PBS

Size:

1 mg/ml

Source:

Mouse

Isotype:

IgG1

Immunogen Catalog Number:

AG6374

GenBank Accession Number:

BC068514

GeneID (NCBI):

55922

UNIPROT ID:

O15226

Full Name:

NFKB repressing factor

Calculated MW:

78 kDa

Observed MW:

100 kDa

Purification Method:

Protein G purification

CloneNo.:

1H10C8

## Applications

Tested Applications:

WB, Indirect ELISA

Species Specificity:

Human, Rat, Mouse

## Background Information

NKRF, also named as Protein ITBA4 or Transcription factor NRF, is a 690 amino acid protein, which contains one G-patch domain and one R3H domain. NKRF is widely and constitutively expressed, with lower level in colon, peripheral blood lymphocytes, lung and kidney. NKRF interacts with a specific negative regulatory element (NRE) 5'-AATTCCTCTGA-3' to mediate transcriptional repression of certain NK-kappa-B responsive genes. NKRF is involved in the constitutive silencing of the IFN- $\beta$  promoter, independently of the virus-induced signals, and in the inhibition of the basal and cytokine-induced iNOS promoter activity.

## Storage

Storage:

Store at -80°C.

The product is shipped with ice packs. Upon receipt, store it immediately at -80°C

Storage Buffer:

PBS Only

For technical support and original validation data for this product please contact:

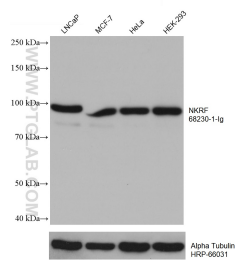
T: 4006900926

E: [Proteintech-CN@ptglab.com](mailto:Proteintech-CN@ptglab.com)

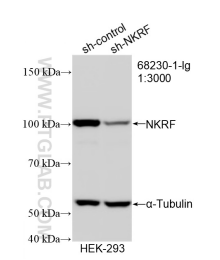
W: [ptgcn.com](http://ptgcn.com)

This product is exclusively available under Proteintech Group brand and is not available to purchase from any other manufacturer.

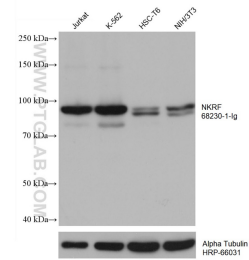
Selected Validation Data



Various lysates were subjected to SDS PAGE followed by western blot with 68230-1-Ig (NKRF antibody) at dilution of 1:3000 incubated at room temperature for 1.5 hours. The membrane was stripped and reblotted with HRP-conjugated Alpha Tubulin Monoclonal antibody (HRP-66031) as loading control. This data was developed using the same antibody clone with 68230-1-PBS in a different storage buffer formulation.



WB result of NKRF antibody (68230-1-Ig; 1:10000; incubated at room temperature for 1.5 hours) with sh-Control and sh-NKRF transfected HEK-293 cells. This data was developed using the same antibody clone with 68230-1-PBS in a different storage buffer formulation.



Various lysates were subjected to SDS PAGE followed by western blot with 68230-1-Ig (NKRF antibody) at dilution of 1:3000 incubated at room temperature for 1.5 hours. The membrane was stripped and reblotted with HRP-conjugated Alpha Tubulin Monoclonal antibody (HRP-66031) as loading control. This data was developed using the same antibody clone with 68230-1-PBS in a different storage buffer formulation.