

For Research Use Only

NKRF Monoclonal antibody

Catalog Number: 68230-1-Ig **Featured Product**



Basic Information

Catalog Number: 68230-1-Ig	GenBank Accession Number: BC068514	Purification Method: Protein G purification
Size: 1000 µg/ml	GeneID (NCBI): 55922	CloneNo.: 1H10C8
Source: Mouse	UNIPROT ID: O15226	Recommended Dilutions: WB 1:1000-1:6000
Isotype: IgG1	Full Name: NFKB repressing factor	
Immunogen Catalog Number: AG6374	Calculated MW: 78 kDa	
	Observed MW: 100 kDa	

Applications

Tested Applications: WB, ELISA	Positive Controls: WB : LNCaP cells, Jurkat cells, HEK-293 cells, MCF-7 cells, HeLa cells, K-562 cells, HSC-T6 cells, NIH/3T3 cells
Species Specificity: Human, Rat, Mouse	

Background Information

NKRF, also named as Protein ITBA4 or Transcription factor NRF, is a 690 amino acid protein, which contains one G-patch domain and one R3H domain. NKRF is widely and constitutively expressed, with lower level in colon, peripheral blood lymphocytes, lung and kidney. NKRF interacts with a specific negative regulatory element (NRE) 5'-AATTCCTCTGA-3' to mediate transcriptional repression of certain NK-kappa-B responsive genes. NKRF is involved in the constitutive silencing of the IFN-β promoter, independently of the virus-induced signals, and in the inhibition of the basal and cytokine-induced iNOS promoter activity.

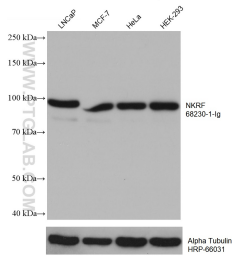
Storage

Storage:
Store at -20°C. Stable for one year after shipment.
Storage Buffer:
PBS with 0.02% sodium azide and 50% glycerol pH 7.3.
Aliquoting is unnecessary for -20°C storage

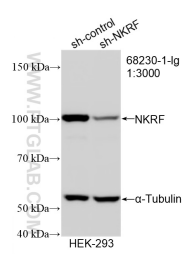
For technical support and original validation data for this product please contact:
T: 4006900926 E: Proteintech-CN@ptglab.com W: ptgcn.com

This product is exclusively available under Proteintech Group brand and is not available to purchase from any other manufacturer.

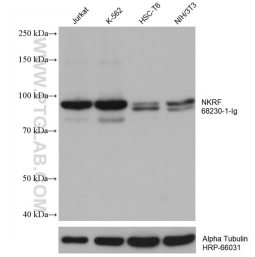
Selected Validation Data



Various lysates were subjected to SDS PAGE followed by western blot with 68230-1-Ig (NKRF antibody) at dilution of 1:3000 incubated at room temperature for 1.5 hours. The membrane was stripped and reblotted with HRP-conjugated Alpha Tubulin Monoclonal antibody (HRP-66031) as loading control.



WB result of NKRF antibody (68230-1-Ig; 1:10000; incubated at room temperature for 1.5 hours) with sh-Control and sh-NKRF transfected HEK-293 cells.



Various lysates were subjected to SDS PAGE followed by western blot with 68230-1-Ig (NKRF antibody) at dilution of 1:3000 incubated at room temperature for 1.5 hours. The membrane was stripped and reblotted with HRP-conjugated Alpha Tubulin Monoclonal antibody (HRP-66031) as loading control.