

For Research Use Only

IMMT Monoclonal antibody, PBS Only (Capture/Detector)

Catalog Number: 68226-1-PBS

Featured Product



Basic Information

Catalog Number:

68226-1-PBS

Size:

1mg/ml

Source:

Mouse

Isotype:

IgG2b

Immunogen Catalog Number:

AG0102

GenBank Accession Number:

BC002412

GeneID (NCBI):

10989

UNIPROT ID:

Q16891

Full Name:

inner membrane protein,
mitochondrial (mitofilin)

Calculated MW:

90 kDa

Observed MW:

90 kDa

Purification Method:

Protein A purification

CloneNo.:

2D2E8

Applications

Tested Applications:

WB, IHC, IF/ICC, FC (Intra), Cytometric bead array,
Indirect ELISA

Species Specificity:

human, mouse, rat

Background Information

IMMT (also known as mitofilin) is an inner mitochondrial membrane protein that is preferentially expressed in heart tissue and is commonly used as the marker for mitochondria. Mitofilin is known to be a critical organizer of mitochondrial cristae morphology and is indispensable for normal mitochondrial function. Three isoforms of mitofilin exist due to the alternative splicing. All three proteins of 87kD, 89kD and 80kD can be detected in immunoblot analysis with this antibody.

Storage

Storage:

Store at -80°C.

The product is shipped with ice packs. Upon receipt, store it immediately at -80°C

Storage Buffer:

PBS Only

For technical support and original validation data for this product please contact:

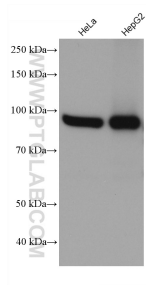
T: 4006900926

E: Proteintech-CN@ptglab.com

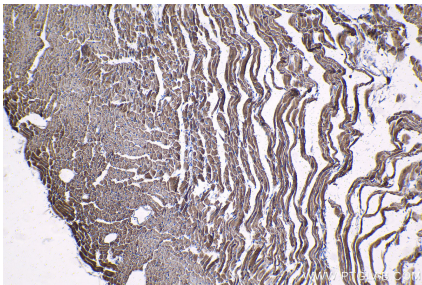
W: ptgcn.com

This product is exclusively available under Proteintech Group brand and is not available to purchase from any other manufacturer.

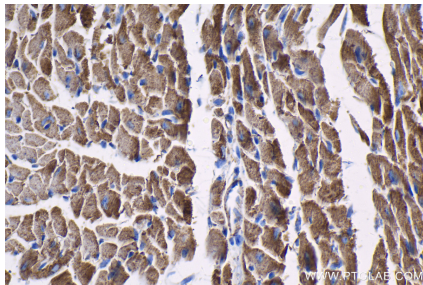
Selected Validation Data



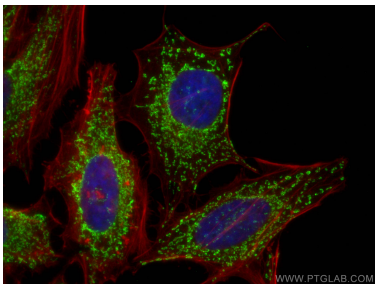
Various lysates were subjected to SDS PAGE followed by western blot with 68226-1-Ig (IMMT antibody) at dilution of 1:10000 incubated at room temperature for 1.5 hours. This data was developed using the same antibody clone with 68226-1-PBS in a different storage buffer formulation.



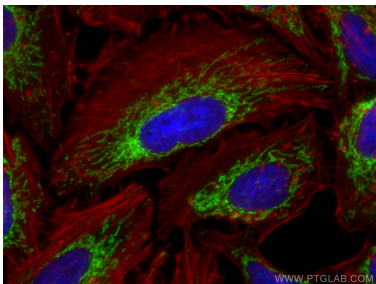
Immunohistochemical analysis of paraffin-embedded mouse heart tissue slide using 68226-1-Ig (IMMT antibody) at dilution of 1:2000 (under 10x lens). Heat mediated antigen retrieval with Tris-EDTA buffer (pH 9.0). This data was developed using the same antibody clone with 68226-1-PBS in a different storage buffer formulation.



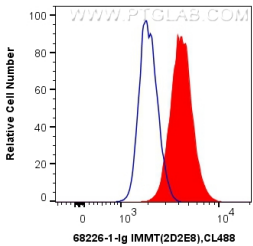
Immunohistochemical analysis of paraffin-embedded mouse heart tissue slide using 68226-1-Ig (IMMT antibody) at dilution of 1:2000 (under 40x lens). Heat mediated antigen retrieval with Tris-EDTA buffer (pH 9.0). This data was developed using the same antibody clone with 68226-1-PBS in a different storage buffer formulation.



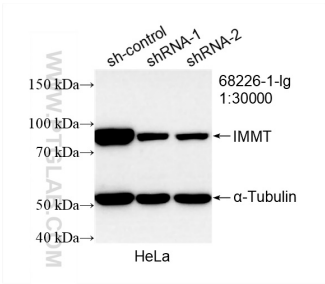
Immunofluorescent analysis of (4% PFA) fixed HeLa cells using IMMT antibody (68226-1-Ig, Clone: 2D2E8) at dilution of 1:800 and CoraLite@488-Conjugated AffiniPure Goat Anti-Mouse IgG(H+L), CL594-Phalloidin (red). This data was developed using the same antibody clone with 68226-1-PBS in a different storage buffer formulation.



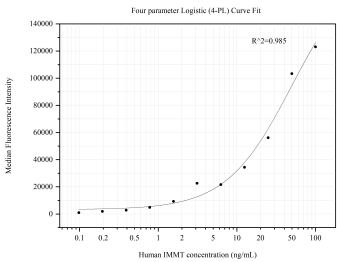
Immunofluorescent analysis of (4% PFA) fixed HeLa cells using IMMT antibody (68226-1-Ig, Clone: 2D2E8) at dilution of 1:800 and CoraLite@488-Conjugated AffiniPure Goat Anti-Mouse IgG(H+L), CL594-Phalloidin (red). This data was developed using the same antibody clone with 68226-1-PBS in a different storage buffer formulation.



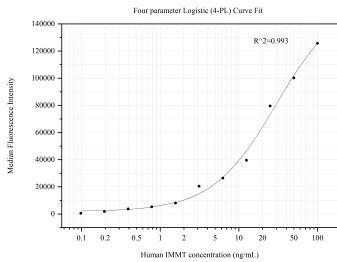
1X10⁶ HEK-293 cells were intracellularly stained with 0.4 ug Anti-Human IMMT (68226-1-Ig, Clone:2D2E8) and CoraLite@488-Conjugated AffiniPure Goat Anti-Mouse IgG(H+L) at dilution 1:1000 (red), or 0.4 ug Mouse IgG2b Isotype Control (66360-3-Ig, Clone: K11B8C4B5) (blue). Cells were fixed with 4% PFA and permeabilized with Flow Cytometry Perm Buffer (PF00011-C). This data was developed using the same antibody clone with 68226-1-PBS in a different storage buffer



WB result of IMMT antibody (68226-1-Ig; 1:30000; incubated at room temperature for 1.5 hours) with sh-Control and sh-IMMT transfected HeLa cells. This data was developed using the same antibody clone with 68226-1-PBS in a different storage buffer formulation.



Cytometric bead array standard curve of MP50515-1, IMMT Monoclonal Matched Antibody Pair, PBS Only. Capture antibody: 68226-1-PBS. Detection antibody: 68226-2-PBS. Standard:Ag0102. Range: 0.098-100 ng/mL



Cytometric bead array standard curve of MP50515-2, IMMT Monoclonal Matched Antibody Pair, PBS Only. Capture antibody: 68226-3-PBS. Detection antibody: 68226-1-PBS. Standard:Ag0102. Range: 0.098-100 ng/mL