

# CA12 Monoclonal antibody

Catalog Number: 68224-1-Ig

## Basic Information

**Catalog Number:**

68224-1-Ig

**Size:**

1000 µg/ml

**Source:**

Mouse

**Isotype:**

IgG1

**Immunogen Catalog Number:**

AG7235

**GenBank Accession Number:**

BC000278

**GeneID (NCBI):**

771

**UNIPROT ID:**

O43570

**Full Name:**

carbonic anhydrase XII

**Calculated MW:**

39 kDa

**Observed MW:**

38-45 kDa

**Purification Method:**

Protein G purification

**CloneNo.:**

3E1D8

**Recommended Dilutions:**

WB 1:5000-1:50000

IF/ICC 1:1000-1:4000

## Applications

**Tested Applications:**

WB, IF/ICC, ELISA

**Species Specificity:**

Human

**Positive Controls:**

WB : A549 cells, LNCaP cells, MCF-7 cells, HeLa cells

IF/ICC : A549 cells,

## Background Information

CA12 belongs to the alpha-carbonic anhydrase family. It reversible hydration of carbon dioxide. Overexpression of the zinc enzyme CA12 is observed in certain human cancers. The structure reveals a prototypical CA fold; however, two CA12 domains associate to form an isologous dimer, an observation that is confirmed by studies of the enzyme in solution.

## Storage

**Storage:**

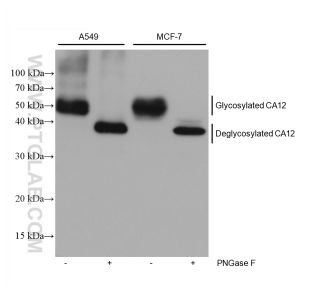
Store at -20°C. Stable for one year after shipment.

**Storage Buffer:**

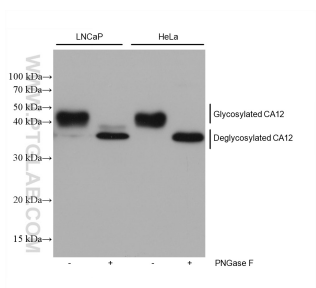
PBS with 0.02% sodium azide and 50% glycerol pH 7.3.

Aliquoting is unnecessary for -20°C storage

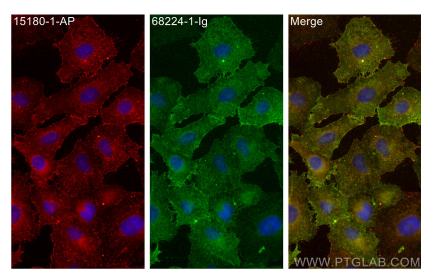
## Selected Validation Data



Various lysates were subjected to SDS PAGE followed by western blot with 68224-1-Ig (CA12 antibody) at dilution of 1:10000 incubated at room temperature for 1.5 hours.



Various lysates were subjected to SDS PAGE followed by western blot with 68224-1-Ig (CA12 antibody) at dilution of 1:10000 incubated at room temperature for 1.5 hours.



Immunofluorescent analysis of (-20°C Methanol) fixed A549 cells using CA12 antibody (68224-1-Ig, Clone: 3E1D8 ) at dilution of 1:2000 and CoraLite®488-Conjugated AffiniPure Goat Anti-Mouse IgG(H+L).