

For Research Use Only

RCL1 Monoclonal antibody, PBS Only

Catalog Number: 68221-1-PBS

Featured Product



Basic Information

Catalog Number:

68221-1-PBS

Source:

Mouse

Isotype:

IgG1

Immunogen Catalog Number:

AG7058

GenBank Accession Number:

BC001025

GeneID (NCBI):

10171

UNIPROT ID:

Q9Y2P8

Full Name:

RNA terminal phosphate cyclase-like

1

Calculated MW:

41 kDa

Observed MW:

41 kDa

Purification Method:

Protein G purification

CloneNo.:

1D1B3

Applications

Tested Applications:

WB, Indirect ELISA

Species Specificity:

human, mouse, rat

Background Information

RNA 3'-terminal phosphate cyclase-like protein (RCL1) does not have cyclase activity. It plays a role in 40S-ribosomal-subunit biogenesis in the early pre-rRNA processing steps at sites A0, A1 and A2 that are required for proper maturation of the 18S RNA. RCL1 has two isoforms with the molecular weight of 41 kDa and 20 kDa.

Storage

Storage:

Store at -80°C.

The product is shipped with ice packs. Upon receipt, store it immediately at -80°C

Storage Buffer:

PBS only, pH7.3

For technical support and original validation data for this product please contact:

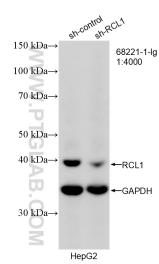
T: 4006900926

E: Proteintech-CN@ptglab.com

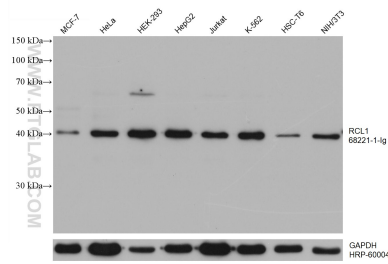
W: ptgcn.com

This product is exclusively available under Proteintech Group brand and is not available to purchase from any other manufacturer.

Selected Validation Data



WB result of RCL1 antibody (68221-1-Ig; 1:4000; incubated at room temperature for 1.5 hours) with sh-Control and sh-RCL1 transfected HepG2 cells. This data was developed using the same antibody clone with 68221-1-PBS in a different storage buffer formulation.



Various lysates were subjected to SDS PAGE followed by western blot with 68221-1-Ig (RCL1 antibody) at dilution of 1:20000 and incubated at room temperature for 1.5 hours. The membrane was stripped and reblotted with HRP-conjugated GAPDH Monoclonal antibody (HRP-60004) as loading control. This data was developed using the same antibody clone with 68221-1-PBS in a different storage buffer formulation.