

ATP6V1B1 Monoclonal antibody

Catalog Number: 68219-1-Ig

Basic Information

Catalog Number:

68219-1-Ig

Size:

500 µg/ml

Source:

Mouse

Isotype:

IgG1

Immunogen Catalog Number:

AG7405

GenBank Accession Number:

BC063411

GeneID (NCBI):

525

UNIPROT ID:

P15313

Full Name:

ATPase, H⁺ transporting, lysosomal
56/58kDa, V1 subunit B1

Calculated MW:

57 kDa

Observed MW:

56 kDa

Purification Method:

Protein G purification

CloneNo.:

1G10A8

Recommended Dilutions:

WB 1:5000-1:50000

IF/ICC 1:400-1:1600

Applications

Tested Applications:

IF/ICC, WB, ELISA

Species Specificity:

Human, Mouse, Rat, Rabbit, Pig

Positive Controls:

WB : JAR cells, pig brain tissue, pig cerebellum tissue, rabbit brain tissue, rabbit cerebellum tissue, rat kidney tissue, rat brain tissue, mouse kidney tissue, mouse brain tissue

IF/ICC : HEK-293 cells,

Background Information

ATP6V1B1, also named ATP6B1, VATB and VPP3, belongs to the ATPase alpha/beta chains family. ATP6V1B1 is mainly expressed in kidney. ATP6V1B1 is essential for the proper assembly and activity of V-ATPase. In renal intercalated cells, ATP6V1B1 mediates secretion of protons (H⁺) into the urine thereby ensuring correct urinary acidification. The calculated molecular weight of ATP6V1B1 is 57 kDa.

Storage

Storage:

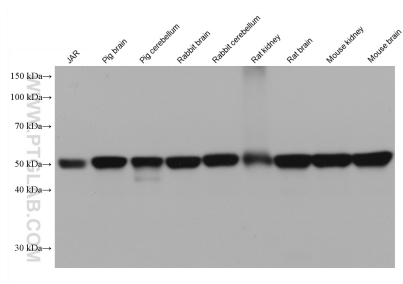
Store at -20°C. Stable for one year after shipment.

Storage Buffer:

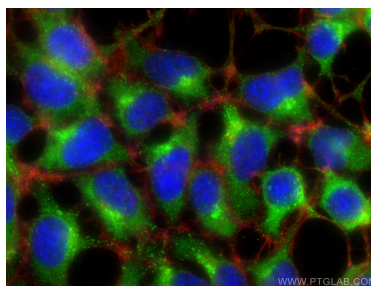
PBS with 0.02% sodium azide and 50% glycerol pH 7.3.

Aliquoting is unnecessary for -20°C storage

Selected Validation Data



Various lysates were subjected to SDS PAGE followed by western blot with 68219-1-Ig (ATP6V1B1 antibody) at dilution of 1:20000 incubated at room temperature for 1.5 hours.



Immunofluorescent analysis of (-20°C Ethanol) fixed HEK-293 cells using ATP6V1B1 antibody (68219-1-Ig, Clone: 1G10A8) at dilution of 1:800 and CoraLite®488-Conjugated AffiniPure Goat Anti-Mouse IgG(H+L), CL594-Phalloidin (red).