

## CD163 Monoclonal antibody

Catalog Number: 68218-1-Ig **5 Publications**

## Basic Information

## Catalog Number:

68218-1-Ig

## Concentration:

1000 ug/ml

## Source:

Mouse

## Isotype:

IgG1

## Immunogen Catalog Number:

AG26721

## GenBank Accession Number:

BC051281

## GeneID (NCBI):

9332

## ENSEMBL Gene ID:

ENSG00000177575

## UNIPROT ID:

Q86VB7

## Full Name:

CD163 molecule

## Calculated MW:

1156 aa, 125 kDa

## Observed MW:

145-150 kDa

## Purification Method:

Protein G purification

## CloneNo.:

2G7A5

## Recommended Dilutions:

WB 1:5000-1:50000

IP 0.5-4.0 ug for 1.0-3.0 mg of total protein lysate

IHC 1:2500-1:10000

IF-P 1:200-1:800

## Applications

## Tested Applications:

WB, IHC, IF-P, IP, ELISA

## Cited Applications:

WB, IHC, IF

## Species Specificity:

human

## Cited Species:

human, mouse, rabbit

**Note-IHC: suggested antigen retrieval with TE buffer pH 9.0; (\*) Alternatively, antigen retrieval may be performed with citrate buffer pH 6.0**

## Positive Controls:

WB : human placenta tissue,

IP : human placenta tissue,

IHC : human liver tissue, human appendicitis tissue, human lung cancer tissue, human placenta tissue, human tonsillitis tissue

IF-P : human liver tissue,

## Background Information

CD163 is a transmembrane protein which belongs to the scavenger receptor cysteine-rich (SRCR) superfamily. This protein is a scavenger receptor for the hemoglobin-haptoglobin complex and is a marker for monocytes and macrophages. Soluble CD163 (sCD163), as a result of ectodomain shedding during inflammatory activation of macrophages, circulates in blood and has been suggested as a plasma/serum marker for macrophage activity.

## Notable Publications

| Author        | Pubmed ID | Journal         | Application |
|---------------|-----------|-----------------|-------------|
| Yuanhe You    | 39897030  | Int J Biol Sci  | IHC,IF      |
| Yangwang Jin  | 39088911  | Biomaterials    | WB,IF       |
| Yingnan Zhang | 39113874  | Am J Cancer Res | IHC,IF      |

## Storage

## Storage:

Store at -20°C. Stable for one year after shipment.

## Storage Buffer:

PBS with 0.02% sodium azide and 50% glycerol, pH7.3

Aliquoting is unnecessary for -20°C storage

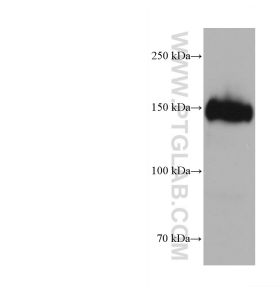
For technical support and original validation data for this product please contact:

T: 4006900926

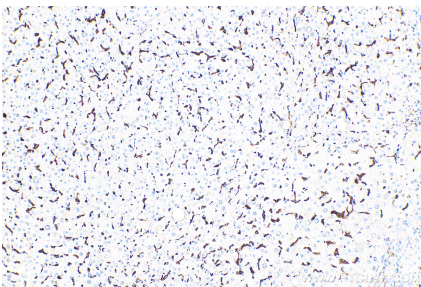
E: [Proteintech-CN@ptglab.com](mailto:Proteintech-CN@ptglab.com)W: [ptgcn.com](http://ptgcn.com)

**This product is exclusively available under Proteintech Group brand and is not available to purchase from any other manufacturer.**

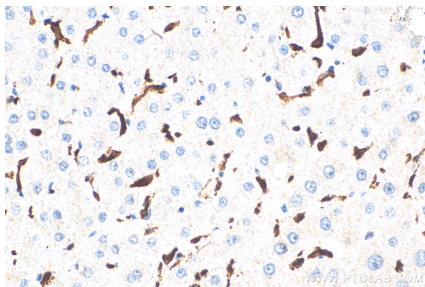
Selected Validation Data



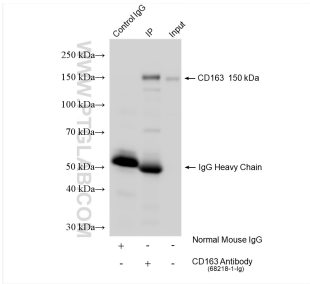
human placenta tissue were subjected to SDS PAGE followed by western blot with 68218-1-Ig (CD163 antibody) at dilution of 1:10000 incubated at room temperature for 1.5 hours.



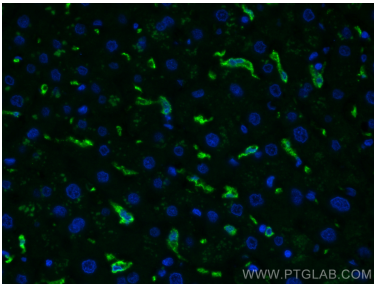
Immunohistochemical analysis of paraffin-embedded human liver tissue slide using 68218-1-Ig (CD163 antibody) at dilution of 1:5000 (under 10x lens). Heat mediated antigen retrieval with Tris-EDTA buffer (pH 9.0).



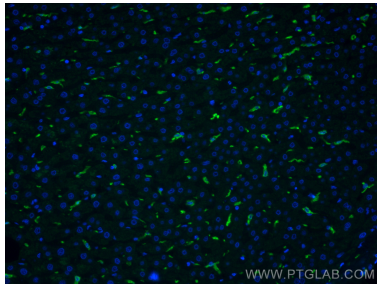
Immunohistochemical analysis of paraffin-embedded human liver tissue slide using 68218-1-Ig (CD163 antibody) at dilution of 1:5000 (under 40x lens). Heat mediated antigen retrieval with Tris-EDTA buffer (pH 9.0).



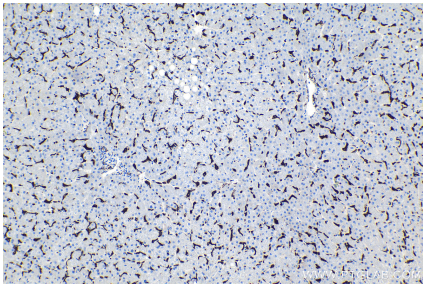
IP result of anti-CD163 (IP:68218-1-Ig, 4ug; Detection:68218-1-Ig 1:4000) with human placenta tissue lysate 1160 ug.



Immunofluorescent analysis of (4% PFA) fixed human liver tissue using CD163 antibody (68218-1-Ig, Clone: 2G7A5 ) at dilution of 1:400 and Coralite®488-Conjugated AffiniPure Goat Anti-Mouse IgG(H+L).



Immunofluorescent analysis of (4% PFA) fixed human liver tissue using CD163 antibody (68218-1-Ig, Clone: 2G7A5 ) at dilution of 1:400 and Coralite®488-Conjugated AffiniPure Goat Anti-Mouse IgG(H+L).



Immunohistochemical analysis of paraffin-embedded human liver tissue slide using 68218-1-Ig (CD163 antibody) at dilution of 1:5000 (under 10x lens). Heat mediated antigen retrieval with Tris-EDTA buffer (pH 9.0).