

## CCT2 Monoclonal antibody

Catalog Number: 68214-1-Ig 1 Publications

## Basic Information

Catalog Number:

68214-1-Ig

Size:

1000 µg/ml

Source:

Mouse

Isotype:

IgG1

Immunogen Catalog Number:

AG19264

GenBank Accession Number:

BC113516

GeneID (NCBI):

10576

UNIPROT ID:

P78371

Full Name:

chaperonin containing TCP1, subunit 2 (beta)

Calculated MW:

535 aa, 57 kDa

Observed MW:

50-58 kDa

Purification Method:

Protein A purification

CloneNo.:

2H6C7

Recommended Dilutions:

WB 1:5000-1:50000

IF/ICC 1:200-1:800

## Applications

Tested Applications:

IF/ICC, WB, ELISA

Cited Applications:

WB

Species Specificity:

Human, Mouse, Pig, Rabbit, Rat

Cited Species:

mouse

Positive Controls:

WB : LNCaP cells, HeLa cells, HEK-293 cells, Jurkat cells, K-562 cells, pig brain tissue, rabbit brain tissue, rat brain tissue, mouse brain tissue

IF/ICC : NIH/3T3 cells,

## Background Information

CCT2 is a gene encoding a molecular chaperone that is a member of the chaperonin-containing TCP1 complex (CCT), also known as the TCP1 ring complex (TRiC). The switch of CCT2's role from a chaperonin to a specific aggregophagy receptor is achieved by CCT2 monomer formation. CCT2 functions independently of ubiquitin and the TRiC complex to facilitate the autophagic clearance of solid protein aggregates. CCT2 has 2 isoforms with a molecular mass of 53 and 57 kDa. (PMID: 35699934)

## Notable Publications

Author	Pubmed ID	Journal	Application
Joshua Linnert	37427378	Front Cell Dev Biol	WB

## Storage

Storage:

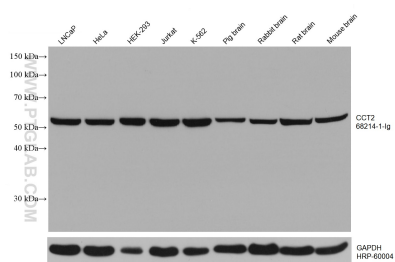
Store at -20°C. Stable for one year after shipment.

Storage Buffer:

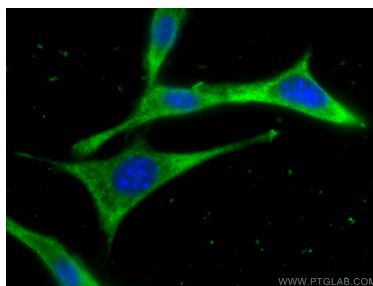
PBS with 0.02% sodium azide and 50% glycerol pH 7.3.

Aliquoting is unnecessary for -20°C storage

## Selected Validation Data



Various lysates were subjected to SDS PAGE followed by western blot with 68214-1-Ig (CCT2 antibody) at dilution of 1:20000 incubated at room temperature for 1.5 hours. The membrane was stripped and reblotted with HRP-conjugated GAPDH Monoclonal antibody (HRP-60004) as loading control.



Immunofluorescent analysis of (-20°C Ethanol) fixed NIH/3T3 cells using CCT2 antibody (68214-1-Ig, Clone: 2H6C7) at dilution of 1:400 and CoraLite®488-Conjugated AffiniPure Goat Anti-Mouse IgG(H+L).