

For Research Use Only

# NF90/ILF3 Monoclonal antibody, PBS Only (Capture)

Catalog Number: 68213-1-PBS



## Basic Information

Catalog Number:

68213-1-PBS

Size:

1mg/ml

Source:

Mouse

Isotype:

IgG1

Immunogen Catalog Number:

AG30868

GenBank Accession Number:

BC064836

GeneID (NCBI):

3609

UNIPROT ID:

Q12906

Full Name:

interleukin enhancer binding factor 3,  
90kDa

Calculated MW:

894 aa, 95 kDa

Observed MW:

90 kDa, 110 kDa

Purification Method:

Protein G purification

CloneNo.:

2H10G3

## Applications

Tested Applications:

WB, IHC, Cytometric bead array, Indirect ELISA

Species Specificity:

human, mouse, rat

## Background Information

### Storage

Storage:

Store at -80°C.

The product is shipped with ice packs. Upon receipt, store it immediately at -80°C

Storage Buffer:

PBS Only

For technical support and original validation data for this product please contact:

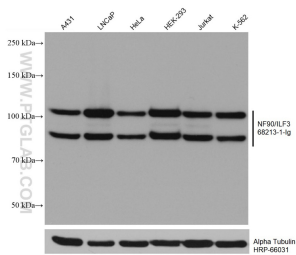
T: 4006900926

E: [Proteintech-CN@ptglab.com](mailto:Proteintech-CN@ptglab.com)

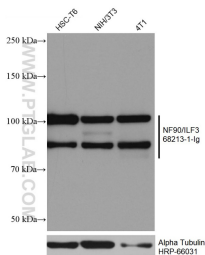
W: [ptgcn.com](http://ptgcn.com)

This product is exclusively available under Proteintech Group brand and is not available to purchase from any other manufacturer.

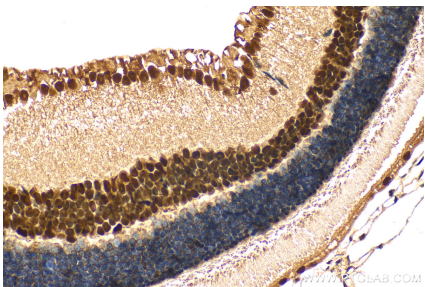
Selected Validation Data



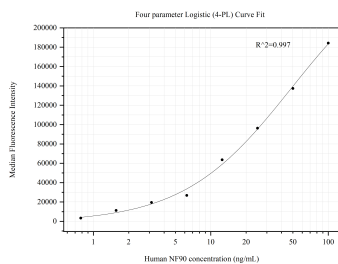
A431 cells were subjected to SDS PAGE followed by western blot with 68213-1-Ig (NF90/ILF3 antibody) at dilution of 1:20000 incubated at room temperature for 1.5 hours. The membrane was stripped and reblotted with HRP-conjugated Alpha Tubulin Monoclonal antibody (HRP-66031) as loading control. This data was developed using the same antibody clone with 68213-1-PBS in a different storage buffer formulation.



Various lysates were subjected to SDS PAGE followed by western blot with 68213-1-Ig (NF90/ILF3 antibody) at dilution of 1:20000 incubated at room temperature for 1.5 hours. The membrane was stripped and reblotted with HRP-conjugated Alpha Tubulin Monoclonal antibody (HRP-66031) as loading control. This data was developed using the same antibody clone with 68213-1-PBS in a different storage buffer formulation.



Immunohistochemical analysis of paraffin-embedded mouse eye tissue slide using 68213-1-Ig (NF90/ILF3 antibody) at dilution of 1:2000 (under 40x lens). Heat mediated antigen retrieval with Tris-EDTA buffer (pH 9.0). This data was developed using the same antibody clone with 68213-1-PBS in a different storage buffer formulation.



Cytometric bead array standard curve of MP50472-3, NF90,ILF3 Monoclonal Matched Antibody Pair, PBS Only. Capture antibody: 68213-1-PBS. Detection antibody: 68213-4-PBS. Standard:Ag30868. Range: 0.781-100 ng/mL