

For Research Use Only

NOTCH2/NOTCH2NL Monoclonal antibody

Catalog Number: 68212-1-Ig



Basic Information

Catalog Number:

68212-1-Ig

Size:

1000 ug/ml

Source:

Mouse

Isotype:

IgG1

Immunogen Catalog Number:

AG1679

GenBank Accession Number:

BC019835

GeneID (NCBI):

388677

UNIPROT ID:

PODPK4

Full Name:

Notch homolog 2 (Drosophila) N-terminal like

Calculated MW:

265 kDa

Observed MW:

250-265 kDa

Purification Method:

Protein G purification

CloneNo.:

2D5E1

Recommended Dilutions:

WB 1:5000-1:50000

IF/ICC 1:400-1:1600

Applications

Tested Applications:

WB, IF/ICC, ELISA

Species Specificity:

human

Positive Controls:

WB : hTERT-RPE1 cells, U-87 MG cells

IF/ICC : HeLa cells,

Background Information

Notch 2 is a member of the notch family. Members of this Type 1 transmembrane protein family share structural characteristics including an extracellular domain consisting of multiple epidermal growth factor-like (EGF) repeats, and an intracellular domain consisting of multiple, different domain types. Notch family members play a role in a variety of developmental processes by controlling cell fate decisions. Notch2, like other Notch genes, functions in development of various tissues. This antibody can recognize NOTCH2 and NOTCH2NL. The antibody detects the full-length NOTCH2 protein about 250-265 kDa.

Storage

Storage:

Store at -20°C. Stable for one year after shipment.

Storage Buffer:

PBS with 0.02% sodium azide and 50% glycerol pH 7.3.

Aliquoting is unnecessary for -20°C storage

For technical support and original validation data for this product please contact:

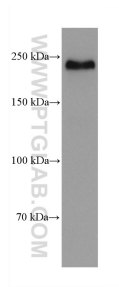
T: 4006900926

E: Proteintech-CN@ptglab.com

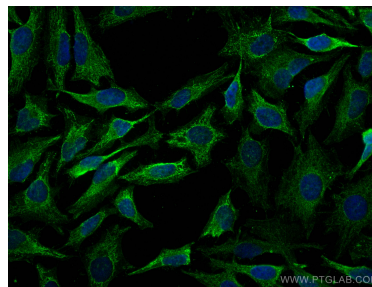
W: ptgcn.com

This product is exclusively available under Proteintech Group brand and is not available to purchase from any other manufacturer.

Selected Validation Data



hTERT-RPE1 cells were subjected to SDS PAGE followed by western blot with 68212-1-Ig (NOTCH2 antibody) at dilution of 1:10000 incubated at room temperature for 1.5 hours.



Immunofluorescent analysis of (4% PFA) fixed HeLa cells using NOTCH2/NOTCH2NL antibody (68212-1-Ig, Clone: 2D5E1) at dilution of 1:800 and CoraLite®488-Conjugated AffiniPure Goat Anti-Mouse IgG(H+L).