

For Research Use Only

# Integrin alpha 1 Monoclonal antibody, PBS Only (Detector)

Catalog Number: 68211-1-PBS



## Basic Information

Catalog Number:

68211-1-PBS

Size:

1 mg/ml

Source:

Mouse

Isotype:

IgG2a

Immunogen Catalog Number:

AG30631

GenBank Accession Number:

BC137121

GeneID (NCBI):

3672

UNIPROT ID:

P56199

Full Name:

integrin, alpha 1

Calculated MW:

1179 aa, 131 kDa

Observed MW:

180 kDa

Purification Method:

Protein A purification

CloneNo.:

1C4F2

## Applications

Tested Applications:

WB, IF-P, Cytometric bead array, Indirect ELISA

Species Specificity:

human

## Background Information

The integrins are a superfamily of cell adhesion receptors that bind to extracellular matrix ligands, cell-surface ligands, and soluble ligands (PMID: 17543136). They are transmembrane  $\alpha\beta$  heterodimers and at least 24 distinct integrin heterodimers are formed by the combination of 18  $\alpha$  and eight  $\beta$  known subunits (PMID: 17543136; 20029421). In addition to mediating cell adhesion, integrins also play important roles in modulating signal transduction pathways that control cellular responses including migration, proliferation, differentiation, and apoptosis (PMID: 19118207). Integrin alpha-1 (ITGA1, CD49a) combines with the beta 1 subunit (ITGB1, CD29) to form a cell-surface receptor for collagen and laminin. This receptor is involved in cell-cell adhesion and may play a role in inflammation and fibrosis. Integrin alpha-1 is a transmembrane glycoprotein with an apparent molecular weight of 180-250 kDa, larger than the calculated molecular weight of 131 kDa (PMID: 2475259; 3257425; 11557277; 18840653).

## Storage

Storage:

Store at -80°C.

The product is shipped with ice packs. Upon receipt, store it immediately at -80°C

Storage Buffer:

PBS Only

For technical support and original validation data for this product please contact:

T: 4006900926

E: [Proteintech-CN@ptglab.com](mailto:Proteintech-CN@ptglab.com)

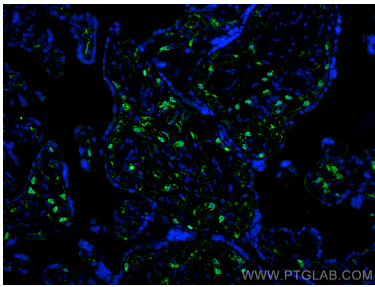
W: [ptgcn.com](http://ptgcn.com)

This product is exclusively available under Proteintech Group brand and is not available to purchase from any other manufacturer.

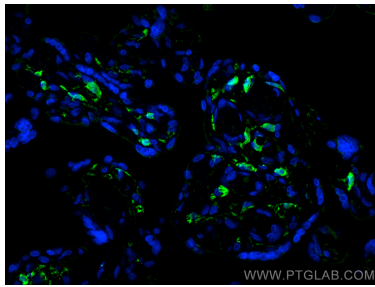
Selected Validation Data



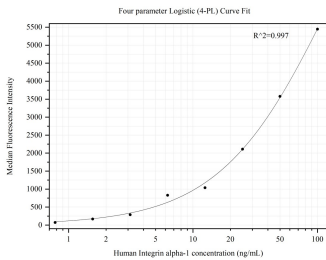
HepG2 cells were subjected to SDS PAGE followed by western blot with 68211-1-Ig (Integrin alpha-1 antibody) at dilution of 1:10000 incubated at room temperature for 1.5 hours. This data was developed using the same antibody clone with 68211-1-PBS in a different storage buffer formulation.



Immunofluorescent analysis of (4% PFA) fixed paraffin-embedded human placenta tissue using Integrin alpha 1 antibody (68211-1-Ig, Clone: 1C4F2 ) at dilution of 1:400 and Multi-rAb Coralite Plus 488-Goat Anti-Mouse Recombinant Secondary Antibody (H+L) (RGAM002). Heat mediated antigen retrieval with Tris-EDTA buffer (pH 9.0). This data was developed using the same antibody clone with 68211-1-PBS in a different storage buffer formulation.



Immunofluorescent analysis of (4% PFA) fixed paraffin-embedded human placenta tissue using Integrin alpha 1 antibody (68211-1-Ig, Clone: 1C4F2 ) at dilution of 1:400 and Multi-rAb Coralite Plus 488-Goat Anti-Mouse Recombinant Secondary Antibody (H+L) (RGAM002). Heat mediated antigen retrieval with Tris-EDTA buffer (pH 9.0). This data was developed using the same antibody clone with 68211-1-PBS in a different storage buffer formulation.



Cytometric bead array standard curve of MP50423-3, Integrin alpha-1 Monoclonal Matched Antibody Pair, PBS Only. Capture antibody: 68211-4-PBS. Detection antibody: 68211-1-PBS. Standard:Ag30631. Range: 0.781-100 ng/mL