

For Research Use Only

# LETM1 Monoclonal antibody

Catalog Number: 68208-1-Ig **Featured Product**



## Basic Information

<b>Catalog Number:</b> 68208-1-Ig	<b>GenBank Accession Number:</b> BC021208	<b>Purification Method:</b> Protein G purification
<b>Size:</b> 1000 µg/ml	<b>GeneID (NCBI):</b> 3954	<b>CloneNo.:</b> 2B9B9
<b>Source:</b> Mouse	<b>UNIPROT ID:</b> O95202	<b>Recommended Dilutions:</b> WB 1:5000-1:50000 IF 1:400-1:1600
<b>Isotype:</b> IgG1	<b>Full Name:</b> leucine zipper-EF-hand containing transmembrane protein 1	
<b>Immunogen Catalog Number:</b> AG8851	<b>Calculated MW:</b> 739 aa, 83 kDa	
	<b>Observed MW:</b> 83 kDa	

## Applications

<b>Tested Applications:</b> IF/ICC, WB, ELISA	<b>Positive Controls:</b>
<b>Species Specificity:</b> Human, rat	<b>WB :</b> HeLa cells, rat heart tissue, HEK-293 cells, HepG2 cells, Jurkat cells, K-562 cells <b>IF :</b> HeLa cells, U-251 cells

## Background Information

LETM1 is a mitochondrial inner membrane protein. It functions to maintain the mitochondrial tubular shapes and is required for normal mitochondrial morphology and cellular viability. It served as an anchor protein for complex formation between mitochondria and ribosome, and regulated mitochondrial biogenesis. It was also identified in Wolf-Hirschhorn syndrome, and was deleted in nearly all patients with the syndrome. A recent study determined that adenovirus-mediated LETM1 may provide a useful target for designing lung tumor prevention and treatment.

## Storage

**Storage:**  
Store at -20°C. Stable for one year after shipment.  
**Storage Buffer:**  
PBS with 0.02% sodium azide and 50% glycerol pH 7.3.  
Aliquoting is unnecessary for -20°C storage

For technical support and original validation data for this product please contact:

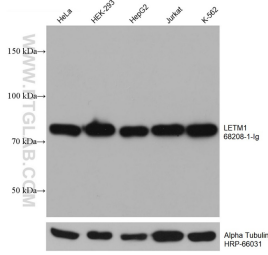
T: 4006900926

E: Proteintech-CN@ptglab.com

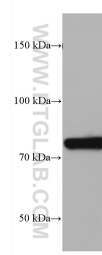
W: ptgcn.com

**This product is exclusively available under Proteintech Group brand and is not available to purchase from any other manufacturer.**

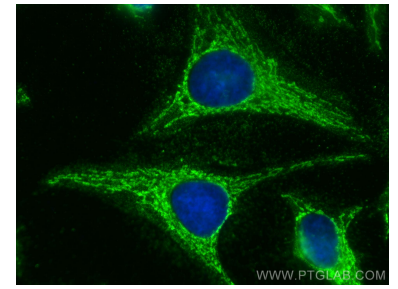
## Selected Validation Data



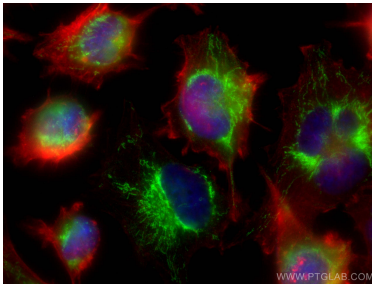
HeLa cells were subjected to SDS PAGE followed by western blot with 68208-1-Ig (LETM1 antibody) at dilution of 1:10000 incubated at room temperature for 1.5 hours. The membrane was stripped and reblotted with HRP-conjugated Alpha Tubulin Monoclonal antibody (HRP-66031) as loading control.



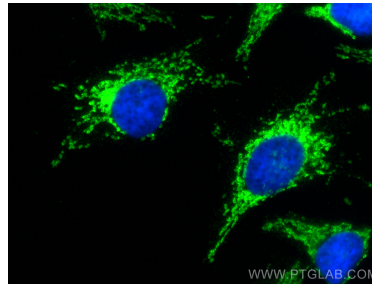
rat heart tissue were subjected to SDS PAGE followed by western blot with 68208-1-Ig (LETM1 antibody) at dilution of 1:10000 incubated at room temperature for 1.5 hours.



Immunofluorescent analysis of (-20°C Methanol) fixed HeLa cells using LETM1 antibody (68208-1-Ig, Clone: 2B9B9) at dilution of 1:800 and CoraLite®488-Conjugated AffiniPure Goat Anti-Mouse IgG(H+L).



Immunofluorescent analysis of (-20°C Ethanol) fixed U-251 cells using LETM1 antibody (68208-1-Ig, Clone: 2B9B9) at dilution of 1:400 and CoraLite®488-Conjugated AffiniPure Goat Anti-Mouse IgG(H+L), CL594-Phalloidin (red).



Immunofluorescent analysis of (-20°C Methanol) fixed HeLa cells using LETM1 antibody (68208-1-Ig, Clone: 2B9B9) at dilution of 1:400 and CoraLite®488-Conjugated AffiniPure Goat Anti-Mouse IgG(H+L).