

For Research Use Only

ARF4 Monoclonal antibody

Catalog Number: 68204-1-Ig

Featured Product

1 Publications



Basic Information

Catalog Number:

68204-1-Ig

Source:

Mouse

Isotype:

IgG2b

Immunogen Catalog Number:

AG25522

GenBank Accession Number:

BC003364

GeneID (NCBI):

378

UNIPROT ID:

P18085

Full Name:

ADP-ribosylation factor 4

Calculated MW:

180 aa, 21 kDa

Observed MW:

18 kDa

Purification Method:

Protein A purification

CloneNo.:

2A4B8

Recommended Dilutions:

WB: 1:5000-1:50000

IHC: 1:1000-1:4000

IF/ICC: 1:400-1:1600

FC (Intra): 0.40 ug per 10⁶ cells in a 100 µl suspension

Applications

Tested Applications:

WB, IHC, IF/ICC, FC (Intra), ELISA

Cited Applications:

WB

Species Specificity:

human, mouse, rat

Cited Species:

rat

Note-IHC: suggested antigen retrieval with TE buffer pH 9.0; (*) Alternatively, antigen retrieval may be performed with citrate buffer pH 6.0

Positive Controls:

WB : LNCaP cells, HEK-293 cells, rat brain tissue, A549 cells, mouse brain tissue, HeLa cells, HepG2 cells, Jurkat cells

IHC : human stomach cancer tissue, human liver tissue, human pancreas cancer tissue

IF/ICC : HepG2 cells,

FC (Intra) : K-562 cells,

Background Information

ARF4, also named as ARF2, belongs to the small GTPase superfamily and Arf family. ADP-ribosylation factors (ARFs) are members of the ARF family of GTP-binding proteins of the Ras superfamily, with 20 kDa protein size. ARFs bind and regulate GTP/GDP cycle by alternating between the active GTP-bound and inactive GDP-bound conformations. ARF family proteins are essential and ubiquitous in eukaryotes. Six highly conserved members of the family have been identified in mammalian cells. They function in vesicular traffic and actin remodelling and other bioprocesses in cells. ARF4 and ARF5 are class II ARFs. Their function are not fully described. (PMID: 7759471, PMID: 16042562). This antibody can bind ARFs for the close sequences.

Notable Publications

Author	Pubmed ID	Journal	Application
Xiaobo Zhang	40288664	Cell Signal	WB

Storage

Storage:

Store at -20°C. Stable for one year after shipment.

Storage Buffer:

PBS with 0.02% sodium azide and 50% glycerol, pH7.3

Aliquoting is unnecessary for -20°C storage

For technical support and original validation data for this product please contact:

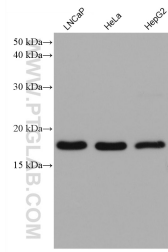
T: 4006900926

E: Proteintech-CN@ptglab.com

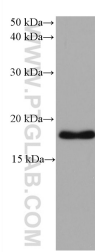
W: ptgcn.com

This product is exclusively available under Proteintech Group brand and is not available to purchase from any other manufacturer.

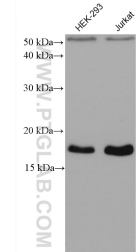
Selected Validation Data



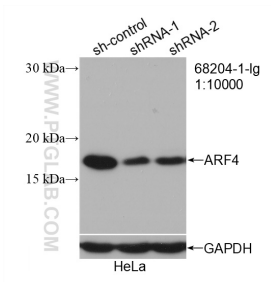
Various lysates were subjected to SDS PAGE followed by western blot with 68204-1-Ig (ARF4 antibody) at dilution of 1:20000 incubated at room temperature for 1.5 hours.



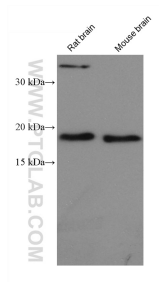
A549 cells were subjected to SDS PAGE followed by western blot with 68204-1-Ig (ARF4 antibody) at dilution of 1:20000 incubated at room temperature for 1.5 hours.



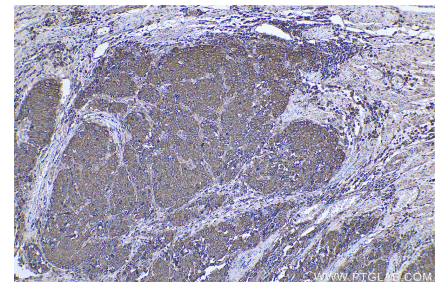
Various lysates were subjected to SDS PAGE followed by western blot with 68204-1-Ig (ARF4 antibody) at dilution of 1:20000 incubated at room temperature for 1.5 hours.



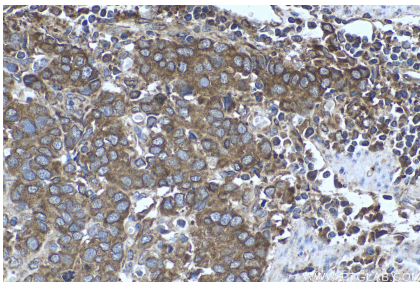
WB result of ARF4 antibody (68204-1-Ig; 1:10000; incubated at room temperature for 1.5 hours) with sh-Control and sh-ARF4 transfected HeLa cells.



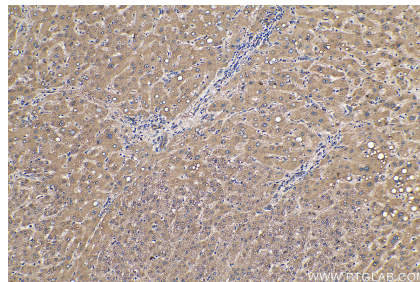
Various lysates were subjected to SDS PAGE followed by western blot with 68204-1-Ig (ARF4 antibody) at dilution of 1:20000 incubated at room temperature for 1.5 hours.



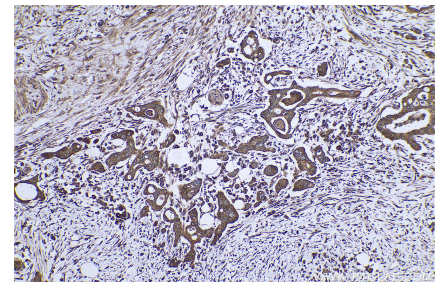
Immunohistochemical analysis of paraffin-embedded human stomach cancer tissue slide using 68204-1-Ig (ARF4 antibody) at dilution of 1:2000 (under 10x lens). Heat mediated antigen retrieval with Tris-EDTA buffer (pH 9.0).



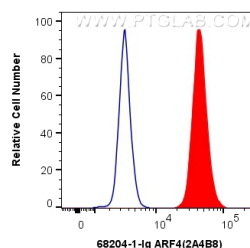
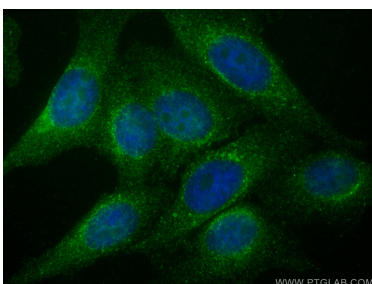
Immunohistochemical analysis of paraffin-embedded human stomach cancer tissue slide using 68204-1-Ig (ARF4 antibody) at dilution of 1:2000 (under 40x lens). Heat mediated antigen retrieval with Tris-EDTA buffer (pH 9.0).



Immunohistochemical analysis of paraffin-embedded human liver tissue slide using 68204-1-Ig (ARF4 antibody) at dilution of 1:8000 (under 10x lens). Heat mediated antigen retrieval with Tris-EDTA buffer (pH 9.0).



Immunohistochemical analysis of paraffin-embedded human pancreas cancer tissue slide using 68204-1-Ig (ARF4 antibody) at dilution of 1:2000 (under 10x lens). Heat mediated antigen retrieval with Tris-EDTA buffer (pH 9.0).



Immunofluorescent analysis of (4% PFA) fixed HepG2 cells using ARF4 antibody (68204-1-Ig, Clone: 2A4B8) at dilution of 1:800 and CoraLite®488-Conjugated AffiniPure Goat Anti-Mouse IgG(H+L).

1X10⁶ K-562 cells were intracellularly stained with 0.4 ug Anti-Human ARF4 (68204-1-Ig, Clone:2A4B8) and CoraLite®488-Conjugated AffiniPure Goat Anti-Mouse IgG(H+L) at dilution 1:1000 (red), or 0.4 ug Mouse IgG2b Isotype Control (66360-3-Ig, Clone: K11B8C4B5) (blue). Cells were fixed with 4% PFA and permeabilized with Flow Cytometry Perm Buffer.