

For Research Use Only

PSMA4 Monoclonal antibody

Catalog Number: 68203-1-Ig



Basic Information

| | | |
|---|--|---|
| Catalog Number: 68203-1-Ig | GenBank Accession Number: BC056249 | Purification Method: Protein A purification |
| Size: 1000 µg/ml | GeneID (NCBI): 5685 | CloneNo.: 2E6E4 |
| Source: Mouse | UNIPROT ID: P25789 | Recommended Dilutions: WB 1:5000-1:50000 IHC 1:1000-1:4000 IF 1:200-1:800 |
| Isotype: IgG2b | Full Name: proteasome (prosome, macropain) subunit, alpha type, 4 | |
| Immunogen Catalog Number: AG32626 | Calculated MW: 237 aa, 27 kDa | |
| | Observed MW: 29 kDa | |

Applications

Tested Applications:
IF/ICC, IHC, WB, ELISA

Species Specificity:
Human, Pig, Rabbit, Rat, Mouse

Note-IHC: suggested antigen retrieval with TE buffer pH 9.0; (*) Alternatively, antigen retrieval may be performed with citrate buffer pH 6.0

Positive Controls:

WB: LNCaP cells, HeLa cells, K-562 cells, Pig heart, Rabbit heart, Rat heart, Mouse heart

IHC: human pancreas cancer tissue,

IF: HeLa cells,

Background Information

Storage

Storage:
Store at -20°C. Stable for one year after shipment.
Storage Buffer:
PBS with 0.02% sodium azide and 50% glycerol pH 7.3.
Aliquoting is unnecessary for -20°C storage

For technical support and original validation data for this product please contact:

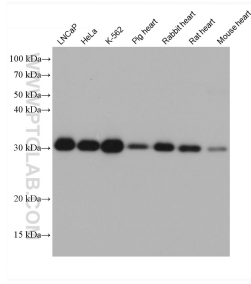
T: 4006900926

E: Proteintech-CN@ptglab.com

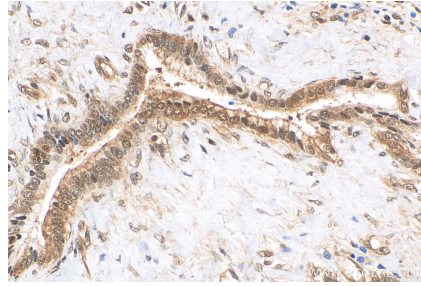
W: ptgcn.com

This product is exclusively available under Proteintech Group brand and is not available to purchase from any other manufacturer.

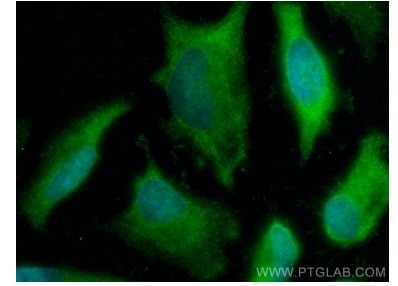
Selected Validation Data



Various lysates were subjected to SDS PAGE followed by western blot with 68203-1-Ig (PSMA4 antibody) at dilution of 1:20000 incubated at room temperature for 1.5 hours.



Immunohistochemical analysis of paraffin-embedded human pancreas cancer tissue slide using 68203-1-Ig (PSMA4 antibody) at dilution of 1:2000 (under 40x Lens). Heat mediated antigen retrieval with Tris-EDTA buffer (pH 9.0).



Immunofluorescent analysis of (-20°C Ethanol) fixed HeLa cells using PSMA4 antibody (68203-1-Ig, Clone: 2E6E4) at dilution of 1:400 and CoraLite®488-Conjugated AffiniPure Goat Anti-Mouse IgG(H+L).