

For Research Use Only

PSMD7 Monoclonal antibody

Catalog Number: 68188-1-Ig

Featured Product

1 Publications



Basic Information

Catalog Number:

68188-1-Ig

Size:

1000 µg/ml

Source:

Mouse

Isotype:

IgG1

Immunogen Catalog Number:

AG9305

GenBank Accession Number:

BC012606

GeneID (NCBI):

5713

UNIPROT ID:

P51665

Full Name:

proteasome (prosome, macropain)

26S subunit, non-ATPase, 7

Calculated MW:

324 aa, 37 kDa

Observed MW:

37 kDa

Purification Method:

Protein G purification

CloneNo.:

3E10E7

Recommended Dilutions:

WB 1:5000-1:50000

Applications

Tested Applications:

WB, ELISA

Cited Applications:

WB

Species Specificity:

Human

Cited Species:

human

Positive Controls:

WB : HCT 116 cells, HeLa cells, HepG2 cells, Jurkat cells, K-562 cells, THP-1 cells

Background Information

Proteasome 26S subunit, non-ATPase 7 (PSMD7), an ATP-independent component of the 19S regulatory subunit, is a member of the JAMM/MPN domain-associated metallopeptidase (JAMM) DUB family. PSMD7, as a core component of the 26S proteasome, is critical for the degradation of ubiquitinated proteins in the proteasome. PSMD7 arrests cell cycle in the G2/M phase during HIV infection. The molecular weight of PSMD7 is 37 kDa. (PMID: 34512150, 34234864)

Notable Publications

Author	Pubmed ID	Journal	Application
Di Wang	39333496	Cell Death Dis	WB

Storage

Storage:

Store at -20°C. Stable for one year after shipment.

Storage Buffer:

PBS with 0.02% sodium azide and 50% glycerol pH 7.3.

Aliquoting is unnecessary for -20°C storage

For technical support and original validation data for this product please contact:

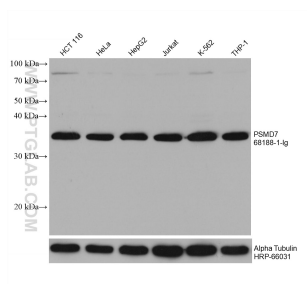
T: 4006900926

E: Proteintech-CN@ptglab.com

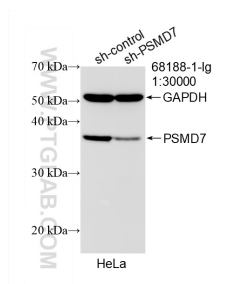
W: ptgcn.com

This product is exclusively available under Proteintech Group brand and is not available to purchase from any other manufacturer.

Selected Validation Data



Various lysates were subjected to SDS PAGE followed by western blot with 68188-1-Ig (PSMD7 antibody) at dilution of 1:20000 incubated at room temperature for 1.5 hours. The membrane was stripped and reblotted with HRP-conjugated Alpha Tubulin Monoclonal antibody (HRP-66031) as loading control.



WB result of PSMD7 antibody (68188-1-Ig; 1:30000; incubated at room temperature for 1.5 hours) with sh-Control and sh-PSMD7 transfected HeLa cells.