

# NSFL1C Monoclonal antibody

Catalog Number: 68182-1-Ig

## Basic Information

**Catalog Number:**

68182-1-Ig

**Size:**

1000 µg/ml

**Source:**

Mouse

**Isotype:**

IgG1

**Immunogen Catalog Number:**

AG8040

**GenBank Accession Number:**

BC002801

**GeneID (NCBI):**

55968

**UNIPROT ID:**

Q9UNZ2

**Full Name:**

NSFL1 (p97) cofactor (p47)

**Calculated MW:**

41 kDa

**Observed MW:**

41 kDa

**Purification Method:**

Protein G purification

**CloneNo.:**

1F12E12

**Recommended Dilutions:**

WB 1:5000-1:50000

IHC 1:500-1:2000

IF/ICC 1:400-1:1600

## Applications

**Tested Applications:**

IF/ICC, IHC, WB, ELISA

**Species Specificity:**

Human, Mouse, Rat, Pig

**Note-IHC: suggested antigen retrieval with TE buffer pH 9.0; (\*) Alternatively, antigen retrieval may be performed with citrate buffer pH 6.0**

**Positive Controls:**

**WB :** rat brain tissue, U2OS cells, mouse brain tissue, A549 cells, A431 cells, LNCaP cells, HeLa cells, Jurkat cells, pig brain tissue

**IHC :** human lung cancer tissue,

**IF/ICC :** A431 cells,

## Background Information

### Storage

**Storage:**

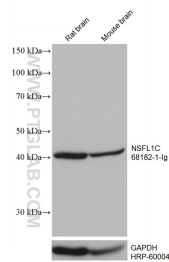
Store at -20°C. Stable for one year after shipment.

**Storage Buffer:**

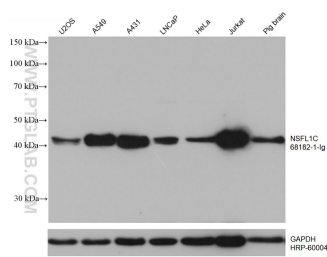
PBS with 0.02% sodium azide and 50% glycerol pH 7.3.

Aliquoting is unnecessary for -20°C storage

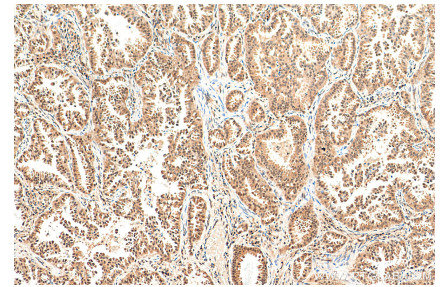
## Selected Validation Data



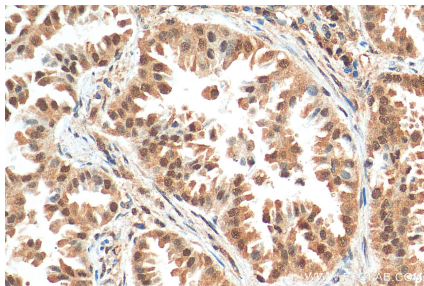
Various lysates were subjected to SDS PAGE followed by western blot with 68182-1-Ig (NSFL1C antibody) at dilution of 1:10000 incubated at room temperature for 1.5 hours. The membrane was stripped and reblotted with HRP-conjugated GAPDH Monoclonal antibody (HRP-60004) as loading control.



Various lysates were subjected to SDS PAGE followed by western blot with 68182-1-Ig (NSFL1C antibody) at dilution of 1:10000 incubated at room temperature for 1.5 hours. The membrane was stripped and reblotted with HRP-conjugated GAPDH Monoclonal antibody (HRP-60004) as loading control.



Immunohistochemical analysis of paraffin-embedded human lung cancer tissue slide using 68182-1-Ig (NSFL1C antibody) at dilution of 1:1000 (under 10x lens). Heat mediated antigen retrieval with Tris-EDTA buffer (pH 9.0).



Immunohistochemical analysis of paraffin-embedded human lung cancer tissue slide using 68182-1-Ig (NSFL1C antibody) at dilution of 1:1000 (under 40x lens). Heat mediated antigen retrieval with Tris-EDTA buffer (pH 9.0).



Immunofluorescent analysis of (4% PFA) fixed A431 cells using NSFL1C antibody (68182-1-Ig, Clone: 1F12E12) at dilution of 1:800 and CoraLite® 488-Conjugated AffiniPure Goat Anti-Mouse IgG(H+L), CL594-Phalloidin (red).