

For Research Use Only

# COMT Monoclonal antibody

Catalog Number: 68181-1-Ig



## Basic Information

<b>Catalog Number:</b> 68181-1-Ig	<b>GenBank Accession Number:</b> BC000419	<b>Purification Method:</b> Protein G purification
<b>Size:</b> 1000 µg/ml	<b>GeneID (NCBI):</b> 1312	<b>CloneNo.:</b> 1A1A4
<b>Source:</b> Mouse	<b>UNIPROT ID:</b> P21964	<b>Recommended Dilutions:</b> WB 1:5000-1:50000 IF 1:200-1:800
<b>Isotype:</b> IgG1	<b>Full Name:</b> catechol-O-methyltransferase	
<b>Immunogen Catalog Number:</b> AG6502	<b>Calculated MW:</b> 30 kDa	
	<b>Observed MW:</b> 28-30 kDa	

## Applications

<b>Tested Applications:</b> FC, IF-P, WB, ELISA	<b>Positive Controls:</b>
<b>Species Specificity:</b> Human, pig, rat, mouse	<b>WB :</b> HeLa cells, HEK-293 cells, HepG2 cells, K-562 cells, pig adrenal gland tissue, human testis tissue, rat testis tissue, mouse testis tissue
	<b>IF :</b> mouse cerebellum tissue,

## Background Information

Catechol O-methyltransferase (COMT) is an important enzyme that catalyzes O-methylation and inactivation of metabolically active catechol-containing bioactive molecules and drugs. The mammalian COMT enzyme exists in soluble form (24-26 kDa) and membrane-bound form (28-30 kDa), which are encoded by a single gene utilizing different promoters.

## Storage

**Storage:**  
Store at -20°C. Stable for one year after shipment.  
**Storage Buffer:**  
PBS with 0.02% sodium azide and 50% glycerol pH 7.3.  
Aliquoting is unnecessary for -20°C storage

For technical support and original validation data for this product please contact:

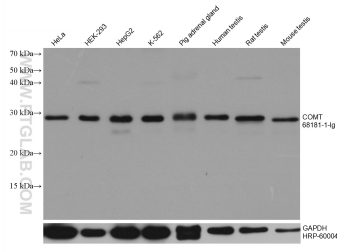
T: 4006900926

E: [Proteintech-CN@ptglab.com](mailto:Proteintech-CN@ptglab.com)

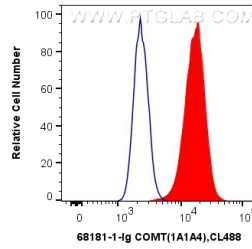
W: [ptgcn.com](http://ptgcn.com)

**This product is exclusively available under Proteintech Group brand and is not available to purchase from any other manufacturer.**

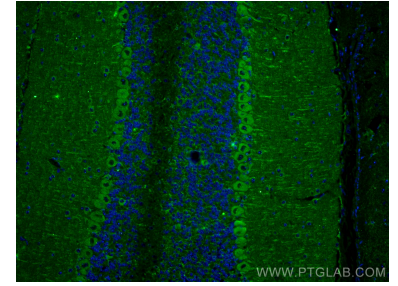
## Selected Validation Data



Various lysates were subjected to SDS PAGE followed by western blot with 68181-1-Ig (COMT antibody) at dilution of 1:10000 and incubated at room temperature for 1.5 hours. The membrane was stripped and reblotted with HRP-conjugated GAPDH Monoclonal antibody (HRP-60004) as loading control.



1X10<sup>6</sup> HepG2 cells were intracellularly stained with 0.4 ug Anti-Human COMT (68181-1-Ig, Clone:1A1A4) and CoraLite@488-Conjugated AffiniPure Goat Anti-Mouse IgG(H+L) at dilution 1:1000 (red), or 0.4 ug Control Antibody. Cells were fixed with 4% PFA and permeabilized with Flow Cytometry Perm Buffer (PF00011-C).



Immunofluorescent analysis of (4% PFA) fixed mouse cerebellum tissue using COMT antibody (68181-1-Ig, Clone: 1A1A4) at dilution of 1:400 and CoraLite@488-Conjugated AffiniPure Goat Anti-Mouse IgG(H+L).