

For Research Use Only

PSMB2 Monoclonal antibody

Catalog Number: 68180-1-Ig

Featured Product



Basic Information

Catalog Number:

68180-1-Ig

Concentration:

1000 ug/ml

Source:

Mouse

Isotype:

IgG1

Immunogen Catalog Number:

AG7308

GenBank Accession Number:

BC000268

GeneID (NCBI):

5690

UNIPROT ID:

P49721

Full Name:

proteasome (prosome, macropain)
subunit, beta type, 2

Calculated MW:

23 kDa

Observed MW:

23 kDa

Purification Method:

Protein G purification

CloneNo.:

3C5C5

Recommended Dilutions:

WB 1:5000-1:50000

IHC 1:50-1:500

IF/ICC 1:400-1:1600

Applications

Tested Applications:

WB, IHC, IF/ICC, ELISA

Species Specificity:

human, mouse, rat

**Note-IHC: suggested antigen retrieval with
TE buffer pH 9.0; (*) Alternatively, antigen
retrieval may be performed with citrate
buffer pH 6.0**

Positive Controls:

WB : MCF-7 cells, SKOV-3 cells, HeLa cells, HEK-293
cells, HepG2 cells, Jurkat cells, K-562 cells, HSC-T6
cells, NIH/3T3 cells

IHC : mouse liver tissue,

IF/ICC : HepG2 cells, HCT 116 cells, PC-3 cells

Background Information

PSMB2(proteasome subunit beta type-2) is also named as macropain subunit C7-I, proteasome component C7-I, multicatalytic endopeptidase complex subunit C7-I and belongs to the peptidase T1B family. It is involved in an ATP/ubiquitin-dependent non-lysosomal proteolytic pathway. The up-regulation of PSMB2 may indicate the activated neuronal defensive mechanism in VAD(vitamin A depletion) brain regions, which may underlie the VAD-related psychosis behavior(PMID:21190828).

Storage

Storage:

Store at -20°C. Stable for one year after shipment.

Storage Buffer:

PBS with 0.02% sodium azide and 50% glycerol pH 7.3.

Aliquoting is unnecessary for -20°C storage

For technical support and original validation data for this product please contact:

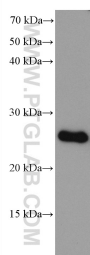
T: 4006900926

E: Proteintech-CN@ptglab.com

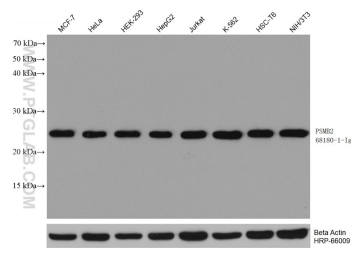
W: ptgcn.com

This product is exclusively available under Proteintech Group brand and is not available to purchase from any other manufacturer.

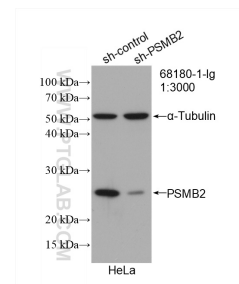
Selected Validation Data



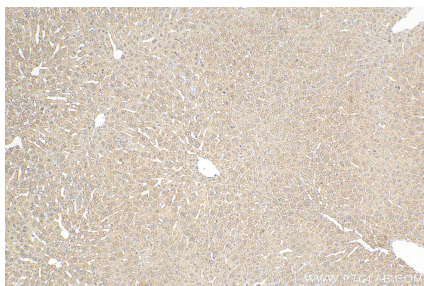
SKOV-3 cells were subjected to SDS PAGE followed by western blot with 68180-1-Ig (PSMB2 antibody) at dilution of 1:10000 incubated at room temperature for 1.5 hours.



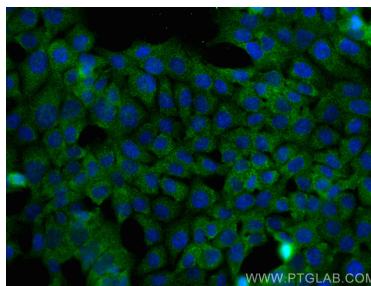
Various lysates were subjected to SDS PAGE followed by western blot with 68180-1-Ig (PSMB2 antibody) at dilution of 1:10000 incubated at room temperature for 1.5 hours. The membrane was stripped and reblotted with HRP-conjugated Beta Actin Monoclonal antibody (HRP-66009) as loading control.



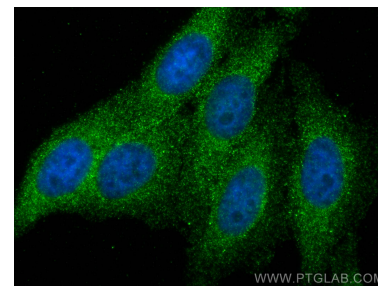
WB result of PSMB2 antibody (68180-1-Ig; 1:3000; incubated at room temperature for 1.5 hours) with sh-Control and sh-PSMB2 transfected HeLa cells.



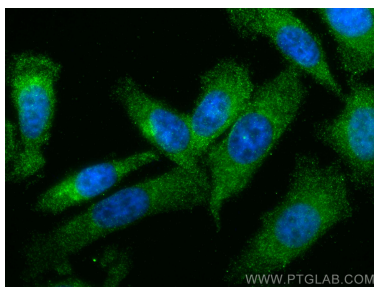
Immunohistochemical analysis of paraffin-embedded mouse liver tissue slide using 68180-1-Ig (PSMB2 antibody) at dilution of 1:200 (under 10x lens). Heat mediated antigen retrieval with Tris-EDTA buffer (pH 9.0).



Immunofluorescent analysis of (4% PFA) fixed HCT 116 cells using PSMB2 antibody (68180-1-Ig, Clone: 3C5C5) at dilution of 1:800 and CoraLite®488-Conjugated AffiniPure Goat Anti-Mouse IgG(H+L).



Immunofluorescent analysis of (4% PFA) fixed HepG2 cells using PSMB2 antibody (68180-1-Ig, Clone: 3C5C5) at dilution of 1:800 and CoraLite®488-Conjugated AffiniPure Goat Anti-Mouse IgG(H+L).



Immunofluorescent analysis of (4% PFA) fixed PC-3 cells using PSMB2 antibody (68180-1-Ig, Clone: 3C5C5) at dilution of 1:800 and CoraLite®488-Conjugated AffiniPure Goat Anti-Mouse IgG(H+L).