

For Research Use Only

# ENOPH1 Monoclonal antibody, PBS Only (Capture)



Catalog Number: 68179-1-PBS

## Basic Information

Catalog Number:	68179-1-PBS	GenBank Accession Number:	BC065815	Purification Method:	Protein G purification
Size:	1mg/ml	GeneID (NCBI):	58478	CloneNo.:	1F1E11
Source:	Mouse	UNIPROT ID:	Q9UHY7		
Isotype:	IgG1	Full Name:	enolase-phosphatase 1		
Immunogen Catalog Number:	AG12553	Calculated MW:	261 aa, 29 kDa		
		Observed MW:	29-35 kDa		

## Applications

**Tested Applications:**  
WB, Indirect ELISA, Cytometric bead array

**Species Specificity:**  
Human, Mouse, Rat, Rabbit, Pig

## Background Information

ENOPH1, also named as MASA and MSTP145, belongs to the HAD-like hydrolase superfamily and MasA/MtnC family. ENOPH1 is a newly identified enzyme involved in L-methionine biosynthesis, which is associated with anxiety and depression. Studies have shown that ENOPH1 plays a crucial role in promoting the proliferation and migration of glioma cells (PMID: 32654229). ENOPH1 has 2 isoforms with the molecular mass of 13 and 29 kDa.

## Storage

**Storage:**  
Store at -80°C.  
**The product is shipped with ice packs. Upon receipt, store it immediately at -80°C**

**Storage Buffer:**  
PBS Only

For technical support and original validation data for this product please contact:

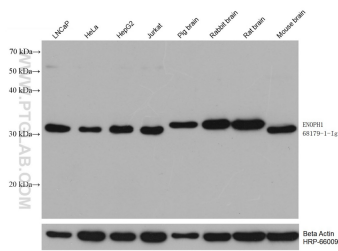
T: 4006900926

E: [Proteintech-CN@ptglab.com](mailto:Proteintech-CN@ptglab.com)

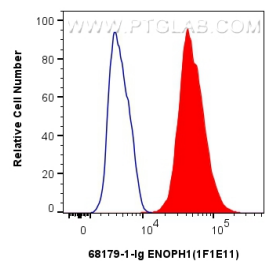
W: [ptgcn.com](http://ptgcn.com)

**This product is exclusively available under Proteintech Group brand and is not available to purchase from any other manufacturer.**

Selected Validation Data



Various lysates were subjected to SDS PAGE followed by western blot with 68179-1-Ig (ENOPH1 antibody) at dilution of 1:20000 incubated at room temperature for 1.5 hours. The membrane was stripped and reblotted with HRP-conjugated Beta Actin Monoclonal antibody (HRP-66009) as loading control. This data was developed using the same antibody clone with 68179-1-PBS in a different storage buffer formulation.



1x10<sup>6</sup> HepG2 cells were intracellularly stained with 0.4 ug ENOPH1 Monoclonal antibody (68179-1-Ig, Clone:1F1E11) and CoraLite®488-Conjugated AffiniPure Goat Anti-Mouse IgG(H+L) (SA00013-1)(red), or 0.4 ug Mouse IgG1 isotype control Mouse McAb (66360-1-Ig, Clone: 1F8D3) (blue). Cells were fixed with 4% PFA and permeabilized with Flow Cytometry Perm Buffer (PF00011-C). This data was developed using the same antibody clone with 68179-1-PBS in a



Cytometric bead array standard curve of MP50127-1, ENOPH1 Monoclonal Matched Antibody Pair, PBS Only. Capture antibody: 68179-1-PBS. Detection antibody: 68179-2-PBS. Standard:Ag12553. Range: 0.781-100 ng/mL