

GPD2 Monoclonal antibody

Catalog Number: 68174-1-Ig

Basic Information

Catalog Number:

68174-1-Ig

Size:

500 µg/ml

Source:

Mouse

Isotype:

IgG1

Immunogen Catalog Number:

AG11212

GenBank Accession Number:

BC019874

GeneID (NCBI):

2820

UNIPROT ID:

P43304

Full Name:

glycerol-3-phosphate dehydrogenase
2 (mitochondrial)

Calculated MW:

41 kDa, 81 kDa

Purification Method:

Protein G purification

CloneNo.:

1C12E2

Recommended Dilutions:

WB 1:5000-1:50000

Applications

Tested Applications:

WB, ELISA

Species Specificity:

Human, Rat, Mouse

Positive Controls:

WB: LNCaP cells, HSC-T6 cells, NIH/3T3 cells, HeLa cells, 4T1 cells

Background Information

GPD2 (Glycerol-3-phosphate dehydrogenase, mitochondrial) belongs to the FAD-dependent glycerol-3-phosphate dehydrogenase family. It is phosphorylated only in capacitated hamster spermatozoa and is noncanonically localized in the acrosome and principal piece in human, mouse, rat, and hamster spermatozoa, though in somatic cells it is localized in the mitochondria. This noncanonical localization may imply a role of GPD2 in acrosome reaction and hyperactivation (PMID:19333995).

Storage

Storage:

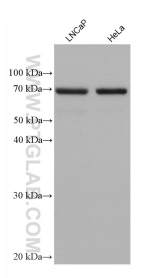
Store at -20°C. Stable for one year after shipment.

Storage Buffer:

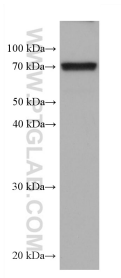
PBS with 0.02% sodium azide and 50% glycerol pH 7.3.

Aliquoting is unnecessary for -20°C storage

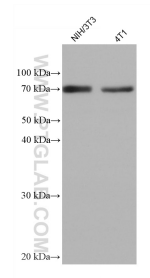
Selected Validation Data



Various lysates were subjected to SDS PAGE followed by western blot with 68174-1-Ig (GPD2 antibody) at dilution of 1:10000 incubated at room temperature for 1.5 hours.



HSC-T6 cells were subjected to SDS PAGE followed by western blot with 68174-1-Ig (GPD2 antibody) at dilution of 1:10000 incubated at room temperature for 1.5 hours.



Various lysates were subjected to SDS PAGE followed by western blot with 68174-1-Ig (GPD2 antibody) at dilution of 1:10000 incubated at room temperature for 1.5 hours.