

SEPT6 Monoclonal antibody

Catalog Number: 68173-1-Ig

Basic Information

Catalog Number:

68173-1-Ig

Size:

500 µg/ml

Source:

Mouse

Isotype:

IgG1

Immunogen Catalog Number:

AG32736

GenBank Accession Number:

BC036240

GeneID (NCBI):

23157

UNIPROT ID:

Q14141

Full Name:

septin 6

Calculated MW:

434 aa, 50 kDa

Observed MW:

50 kDa

Purification Method:

Protein G purification

CloneNo.:

1B1G1

Recommended Dilutions:

WB 1:5000-1:50000

IF/ICC 1:400-1:1600

Applications

Tested Applications:

IF/ICC, WB, ELISA

Species Specificity:

Human, mouse, pig, rabbit, rat

Positive Controls:

WB : HeLa cells, HEK-293 cells, HepG2 cells, Jurkat cells, K-562 cells, Pig brain tissue, Rabbit brain tissue, Rat brain tissue, Mouse brain tissue

IF/ICC : HEK-293 cells,

Background Information

Septin 6 belongs to the septins family which are conserved GTP-binding proteins functioning as dynamic, regulatable scaffolds for the recruitment of other proteins. They are involved in membrane dynamics, vesicle trafficking, apoptosis, and cytoskeletal remodeling. Septin 6 also interacts with hepatitis C virus (HCV) NS5b RNA polymerase and NS5b-binding protein (HNRNPA1) and may play a role in HCV RNA replication.

Storage

Storage:

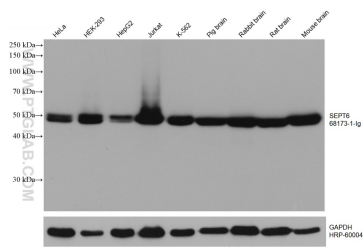
Store at -20°C. Stable for one year after shipment.

Storage Buffer:

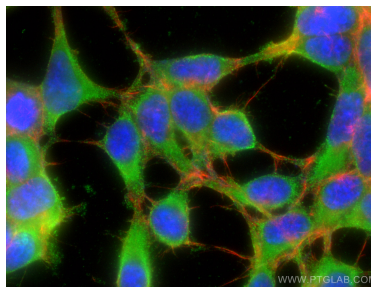
PBS with 0.02% sodium azide and 50% glycerol pH 7.3.

Aliquoting is unnecessary for -20°C storage

Selected Validation Data



Various lysates were subjected to SDS PAGE followed by western blot with 68173-1-Ig (SEPT6 antibody) at dilution of 1:10000 incubated at room temperature for 1.5 hours. The membrane was stripped and reblotted with HRP-conjugated GAPDH Monoclonal antibody (HRP-60004) as loading control.



Immunofluorescent analysis of (-20°C Ethanol) fixed HEK-293 cells using SEPT6 antibody (68173-1-Ig, Clone: 1B1G1) at dilution of 1:800 and CoraLite®488-Conjugated AffiniPure Goat Anti-Mouse IgG(H+L), CL594-Phalloidin (red).