

For Research Use Only

TOLLIP Monoclonal antibody, PBS Only

Catalog Number: 68170-1-PBS

Featured Product



Basic Information

Catalog Number:

68170-1-PBS

Source:

Mouse

Isotype:

IgG1

Immunogen Catalog Number:

AG32731

GenBank Accession Number:

BC012057

GeneID (NCBI):

54472

UNIPROT ID:

Q9H0E2

Full Name:

toll interacting protein

Calculated MW:

30 kDa

Observed MW:

30 kDa

Purification Method:

Protein G purification

CloneNo.:

1B3C4

Applications

Tested Applications:

WB, IHC, IF/ICC, FC (Intra), ELISA

Species Specificity:

human, mouse, rat, pig

Background Information

TOLLIP (Toll interacting protein), is an inhibitory adaptor protein. Tollip is a negative regulator of IL-1R and Toll-like receptors signalling pathway, involved in inflammatory immune response and inhibiting IRAK1 phosphorylation and kinase activity (PMID:11441107, PMID:10854325, PMID:11751856). The TOLLIP-dependent selective autophagy pathway plays a role in clearance of cytotoxic polyQ proteins aggregates (PubMed:25042851).

Storage

Storage:

Store at -80°C.

The product is shipped with ice packs. Upon receipt, store it immediately at -80°C

Storage Buffer:

PBS only, pH7.3

For technical support and original validation data for this product please contact:

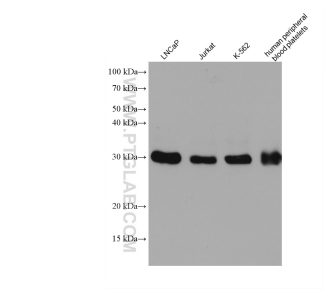
T: 4006900926

E: Proteintech-CN@ptglab.com

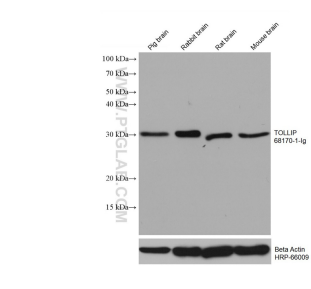
W: ptgcn.com

This product is exclusively available under Proteintech Group brand and is not available to purchase from any other manufacturer.

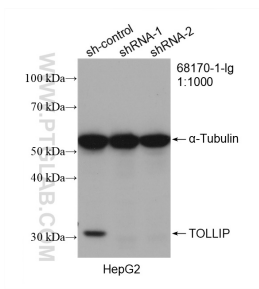
Selected Validation Data



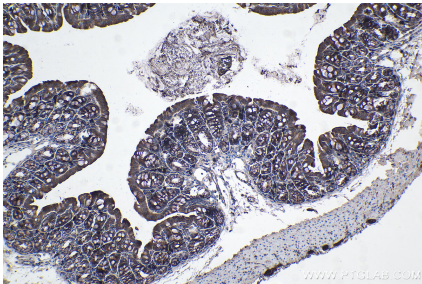
Various lysates were subjected to SDS PAGE followed by western blot with 68170-1-Ig (TOLLIP antibody) at dilution of 1:10000 incubated at room temperature for 1.5 hours. This data was developed using the same antibody clone with 68170-1-PBS in a different storage buffer formulation.



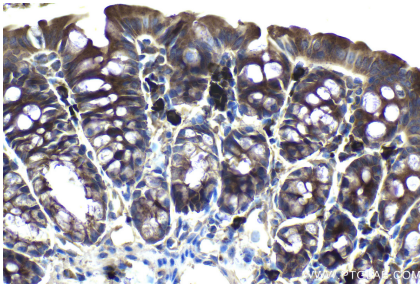
Various lysates were subjected to SDS PAGE followed by western blot with 68170-1-Ig (TOLLIP antibody) at dilution of 1:10000 incubated at room temperature for 1.5 hours. The membrane was stripped and reblotted with HRP-conjugated Beta Actin Monoclonal antibody (HRP-66009) as loading control. This data was developed using the same antibody clone with 68170-1-PBS in a different storage buffer formulation.



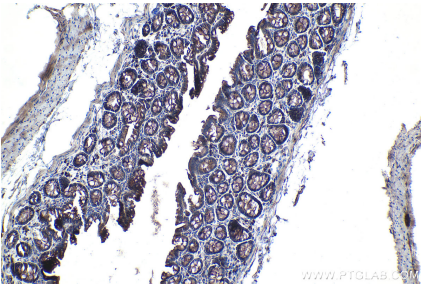
WB result of TOLLIP antibody (68170-1-Ig; 1:1000; incubated at room temperature for 1.5 hours) with sh-Control and sh-TOLLIP transfected HepG2 cells. This data was developed using the same antibody clone with 68170-1-PBS in a different storage buffer formulation.



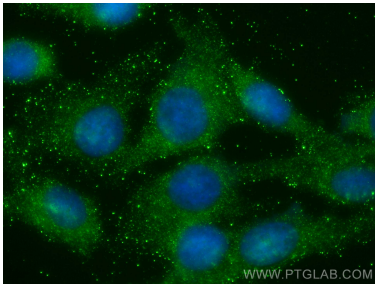
Immunohistochemical analysis of paraffin-embedded mouse colon tissue slide using 68170-1-Ig (TOLLIP antibody) at dilution of 1:2000 (under 10x lens). Heat mediated antigen retrieval with Tris-EDTA buffer (pH 9.0). This data was developed using the same antibody clone with 68170-1-PBS in a different storage buffer formulation.



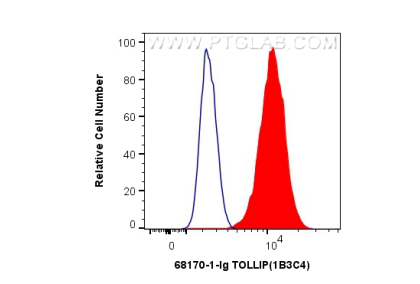
Immunohistochemical analysis of paraffin-embedded mouse colon tissue slide using 68170-1-Ig (TOLLIP antibody) at dilution of 1:2000 (under 40x lens). Heat mediated antigen retrieval with Tris-EDTA buffer (pH 9.0). This data was developed using the same antibody clone with 68170-1-PBS in a different storage buffer formulation.



Immunohistochemical analysis of paraffin-embedded rat colon tissue slide using 68170-1-Ig (TOLLIP antibody) at dilution of 1:2000 (under 10x lens). Heat mediated antigen retrieval with Tris-EDTA buffer (pH 9.0). This data was developed using the same antibody clone with 68170-1-PBS in a different storage buffer formulation.



Immunofluorescent analysis of (-20°C Methanol) fixed U2OS cells using TOLLIP antibody (68170-1-Ig, Clone: 1B3C4) at dilution of 1:200 and CoraLite®488-Conjugated AffiniPure Goat Anti-Mouse IgG(H+L). This data was developed using the same antibody clone with 68170-1-PBS in a different storage buffer formulation.



1X10⁶ Jurkat cells were intracellularly stained with 0.4 ug Anti-Human TOLLIP (68170-1-Ig, Clone:1B3C4) and CoraLite®488-Conjugated AffiniPure Goat Anti-Mouse IgG(H+L) at dilution 1:1000 (red), or 0.4 ug Mouse IgG1 Isotype Control (MOPC-21) (65124-1-Ig, Clone: MOPC-21) (blue). Cells were fixed with 4% PFA and permeabilized with Flow Cytometry Perm Buffer. This data was developed using the same antibody clone with 68170-1-PBS in a different storage buffer