

For Research Use Only

# NIT2 Monoclonal antibody

Catalog Number: 68169-1-Ig **1 Publications**



## Basic Information

Catalog Number: 68169-1-Ig	GenBank Accession Number: BC020620	Purification Method: Protein A purification
Size: 1000 µg/ml	GeneID (NCBI): 56954	CloneNo.: 1E5B1
Source: Mouse	UNIPROT ID: Q9NQR4	Recommended Dilutions: WB 1:5000-1:50000 IHC 1:200-1:800 IF/ICC 1:200-1:800
Isotype: IgG2b	Full Name: nitrilase family, member 2	
Immunogen Catalog Number: AG9889	Calculated MW: 276 aa, 31 kDa Observed MW: 31 kDa	

## Applications

Tested Applications: WB, IHC, IF/ICC, ELISA	Positive Controls: WB : HEK-293 cells, HeLa cells, pig liver tissue, mouse liver tissue, HepG2 cells, Jurkat cells IHC : human kidney tissue, IF/ICC : U-251 cells,
Cited Applications: WB	
Species Specificity: Human, mouse, rat, pig	
Cited Species: human	
<b>Note-IHC: suggested antigen retrieval with TE buffer pH 9.0; (*) Alternatively, antigen retrieval may be performed with citrate buffer pH 6.0</b>	

## Background Information

NIT2 belongs to a branch of the nitrilase superfamily of enzymes that cleave carbon-nitrogen bonds. NIT2 functions as an omega-amidase and catalyzes hydrolysis of alpha-ketoglutaramate, forming alpha-ketoglutarate and ammonia. This reaction is also functionally coupled with a subset of transaminases that reaminate the keto acid analogs of some essential amino acids, most particularly methionine and phenylalanine.

## Notable Publications

Author	Pubmed ID	Journal	Application
Huiwen Xu	39003419	Commun Biol	WB

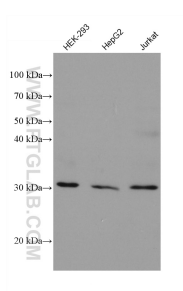
## Storage

Storage:  
Store at -20°C. Stable for one year after shipment.  
Storage Buffer:  
PBS with 0.02% sodium azide and 50% glycerol pH 7.3.  
Aliquoting is unnecessary for -20°C storage

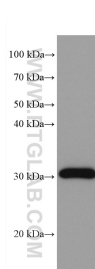
For technical support and original validation data for this product please contact:  
T: 4006900926 E: Proteintech-CN@ptglab.com W: ptgcn.com

This product is exclusively available under Proteintech Group brand and is not available to purchase from any other manufacturer.

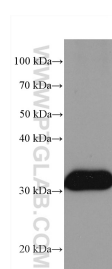
## Selected Validation Data



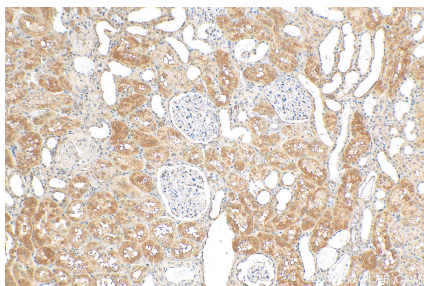
Various lysates were subjected to SDS PAGE followed by western blot with 68169-1-Ig (NIT2 antibody) at dilution of 1:20000 incubated at room temperature for 1.5 hours.



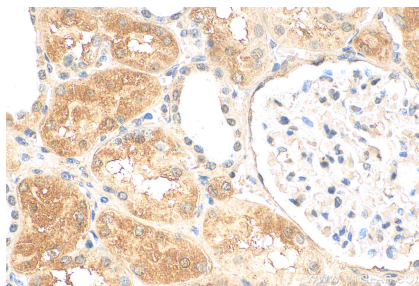
pig liver tissue were subjected to SDS PAGE followed by western blot with 68169-1-Ig (NIT2 antibody) at dilution of 1:20000 incubated at room temperature for 1.5 hours.



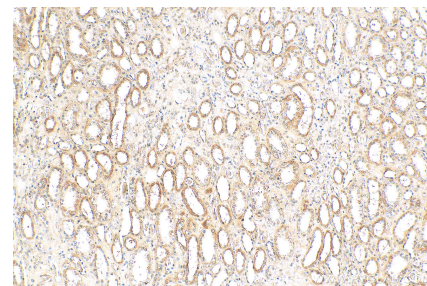
rat liver tissue were subjected to SDS PAGE followed by western blot with 68169-1-Ig (NIT2 antibody) at dilution of 1:20000 incubated at room temperature for 1.5 hours.



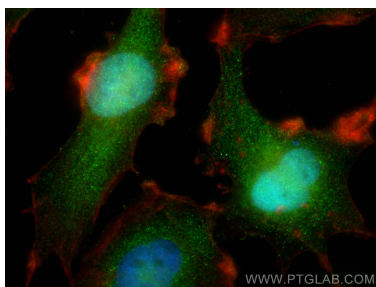
Immunohistochemical analysis of paraffin-embedded human kidney tissue slide using 68169-1-Ig (NIT2 antibody) at dilution of 1:400 (under 10x lens). Heat mediated antigen retrieval with Tris-EDTA buffer (pH 9.0).



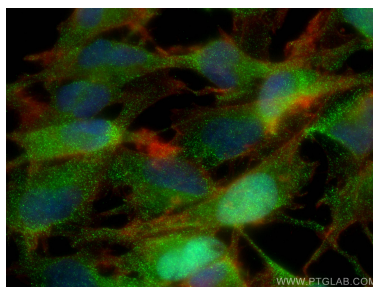
Immunohistochemical analysis of paraffin-embedded human kidney tissue slide using 68169-1-Ig (NIT2 antibody) at dilution of 1:400 (under 40x lens). Heat mediated antigen retrieval with Tris-EDTA buffer (pH 9.0).



Immunohistochemical analysis of paraffin-embedded human kidney tissue slide using 68169-1-Ig (NIT2 antibody) at dilution of 1:400 (under 10x lens). Heat mediated antigen retrieval with Tris-EDTA buffer (pH 9.0).



Immunofluorescent analysis of (4% PFA) fixed U-251 cells using NIT2 antibody (68169-1-Ig, Clone: 1E5B1 ) at dilution of 1:400 and CoraLite®488-Conjugated Goat Anti-Mouse IgG(H+L), CL594-Phalloidin (red).



Immunofluorescent analysis of (4% PFA) fixed U-251 cells using NIT2 antibody (68169-1-Ig, Clone: 1E5B1 ) at dilution of 1:400 and CoraLite®488-Conjugated Goat Anti-Mouse IgG(H+L), CL594-Phalloidin (red).