

For Research Use Only

# ERBB2IP Monoclonal antibody, PBS Only (Capture)



Catalog Number: 68159-1-PBS

Featured Product

## Basic Information

Catalog Number:

68159-1-PBS

Concentration:

1mg/ml

Source:

Mouse

Isotype:

IgG1

Immunogen Catalog Number:

AG18514

GenBank Accession Number:

BC115012

GeneID (NCBI):

55914

UNIPROT ID:

Q96RT1

Full Name:

erbb2 interacting protein

Calculated MW:

1412 aa, 158 kDa

Observed MW:

150-180 kDa

Purification Method:

Protein A purification

CloneNo.:

1A8D4

## Applications

Tested Applications:

WB, IF/ICC, Cytometric bead array, Indirect ELISA

Species Specificity:

human, mouse, rat

## Background Information

ERBB2IP is a cytoplasmic protein that contains leucine-rich repeats (LRR) and PSD95/Dlg1/zo-1 (PDZ) domain (thus named a LAP protein). ERBB2IP interacts, via its single PDZ domain, specifically with ErbB2, but not with ErbB3, ErbB4, or EGFR. It is colocalized with ErbB2 at the basolateral membranes of epithelial cells. In addition, ERBB2IP also interacts with PSD - 95, Lano and with three p120 - related catenins, eBPAG1 and the  $\beta$  4 subunit of the  $\alpha$  6  $\beta$  4 integrin, two major components of hemidesmosomes. The molecular weight of ERBB2IP was predicted 150-180 kDa by Western Blot.(PMID: 25288731, PMID: 24252174, PMID: 19289088)

## Storage

Storage:

Store at -80°C.

The product is shipped with ice packs. Upon receipt, store it immediately at -80°C

Storage Buffer:

PBS Only

For technical support and original validation data for this product please contact:

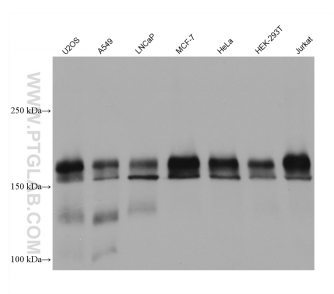
T: 4006900926

E: [Proteintech-CN@ptglab.com](mailto:Proteintech-CN@ptglab.com)

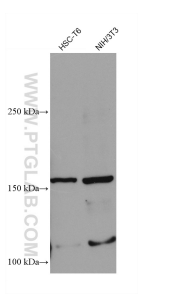
W: [ptgcn.com](http://ptgcn.com)

This product is exclusively available under Proteintech Group brand and is not available to purchase from any other manufacturer.

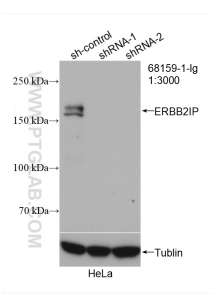
Selected Validation Data



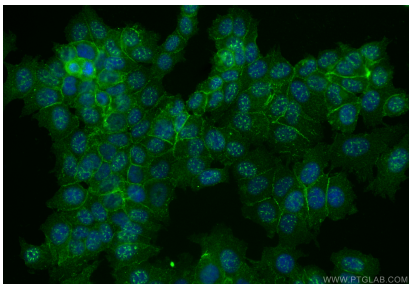
Various lysates were subjected to SDS PAGE followed by western blot with 68159-1-Ig (ERBB2IP antibody) at dilution of 1:10000 incubated at room temperature for 1.5 hours. This data was developed using the same antibody clone with 68159-1-PBS in a different storage buffer formulation.



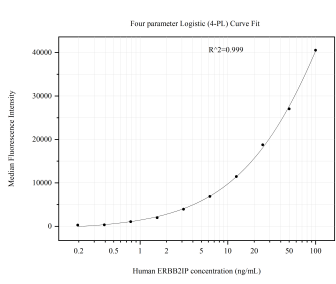
Various lysates were subjected to SDS PAGE followed by western blot with 68159-1-Ig (ERBB2IP antibody) at dilution of 1:10000 incubated at room temperature for 1.5 hours. This data was developed using the same antibody clone with 68159-1-PBS in a different storage buffer formulation.



WB result of ERBB2IP antibody (68159-1-Ig; 1:3000; incubated at room temperature for 1.5 hours) with sh-Control and sh-ERBB2IP transfected HeLa cells. This data was developed using the same antibody clone with 68159-1-PBS in a different storage buffer formulation.



Immunofluorescent analysis of (4% PFA) fixed MCF-7 cells using ERBB2IP antibody (68159-1-Ig, Clone: 1A8D4 ) at dilution of 1:1000 and CoraLite®488-Conjugated Goat Anti-Mouse IgG(H+L) (SA00013-1). This data was developed using the same antibody clone with 68159-1-PBS in a different storage buffer formulation.



Cytometric bead array standard curve of MP5110-1, ERBB2IP Monoclonal Matched Antibody Pair, PBS Only. Capture antibody: 68159-1-PBS. Detection antibody: 68159-2-PBS. Standard:Ag18514. Range: 0.195-100 ng/mL.