

For Research Use Only

ERBB2IP Monoclonal antibody

Catalog Number: 68159-1-Ig

Featured Product



Basic Information

Catalog Number:

68159-1-Ig

Concentration:

1000 ug/ml

Source:

Mouse

Isotype:

IgG1

Immunogen Catalog Number:

AG18514

GenBank Accession Number:

BC115012

GeneID (NCBI):

55914

UNIPROT ID:

Q96RT1

Full Name:

erbb2 interacting protein

Calculated MW:

1412 aa, 158 kDa

Observed MW:

150-180 kDa

Purification Method:

Protein A purification

CloneNo.:

1A8D4

Recommended Dilutions:

WB 1:5000-1:50000

IF/ICC 1:500-1:2000

Applications

Tested Applications:

WB, IF/ICC, ELISA

Species Specificity:

human, mouse, rat

Positive Controls:

WB : U2OS cells, HSC-T6 cells, HeLa cells, A549 cells, LNCaP cells, MCF-7 cells, HEK-293T cells, Jurkat cells, NIH/3T3 cells

IF/ICC : MCF-7 cells,

Background Information

ERBB2IP is a cytoplasmic protein that contains leucine-rich repeats (LRR) and PSD95/Dlg1/zo-1 (PDZ) domain (thus named a LAP protein). ERBB2IP interacts, via its single PDZ domain, specifically with ErbB2, but not with ErbB3, ErbB4, or EGFR. It is colocalized with ErbB2 at the basolateral membranes of epithelial cells. In addition, ERBB2IP also interacts with PSD - 95, Lano and with three p120 - related catenins, eBPAG1 and the β 4 subunit of the α 6 β 4 integrin, two major components of hemidesmosomes. The molecular weight of ERBB2IP was predicted 150-180 kDa by Western Blot.(PMID: 25288731, PMID: 24252174, PMID: 19289088)

Storage

Storage:

Store at -20°C. Stable for one year after shipment.

Storage Buffer:

PBS with 0.02% sodium azide and 50% glycerol pH 7.3.

Aliquoting is unnecessary for -20°C storage

For technical support and original validation data for this product please contact:

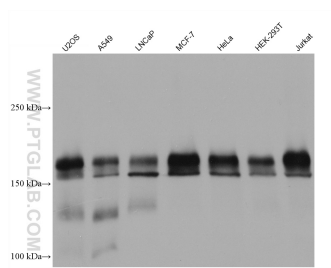
T: 4006900926

E: Proteintech-CN@ptglab.com

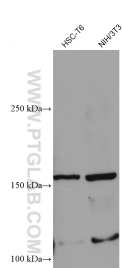
W: ptgcn.com

This product is exclusively available under Proteintech Group brand and is not available to purchase from any other manufacturer.

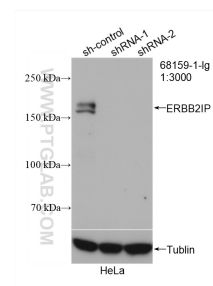
Selected Validation Data



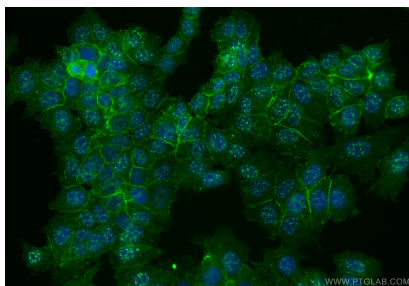
Various lysates were subjected to SDS PAGE followed by western blot with 68159-1-Ig (ERBB2IP antibody) at dilution of 1:10000 incubated at room temperature for 1.5 hours.



Various lysates were subjected to SDS PAGE followed by western blot with 68159-1-Ig (ERBB2IP antibody) at dilution of 1:10000 incubated at room temperature for 1.5 hours.



WB result of ERBB2IP antibody (68159-1-Ig; 1:3000; incubated at room temperature for 1.5 hours) with sh-Control and sh-ERBB2IP transfected HeLa cells.



Immunofluorescent analysis of (4% PFA) fixed MCF-7 cells using ERBB2IP antibody (68159-1-Ig, Clone: 1A8D4) at dilution of 1:1000 and CoraLite®488-Conjugated Goat Anti-Mouse IgG(H+L) (SA00013-1).