

For Research Use Only

STIP1 Monoclonal antibody, PBS Only

Catalog Number: 68155-1-PBS



Basic Information

Catalog Number: 68155-1-PBS	GenBank Accession Number: BC002987	Purification Method: Protein G purification
Size: 1mg/ml	GeneID (NCBI): 10963	CloneNo.: 1B5H2
Source: Mouse	UNIPROT ID: P31948	
Isotype: IgG1	Full Name: stress-induced-phosphoprotein 1	
Immunogen Catalog Number: AG7851	Calculated MW: 63 kDa	
	Observed MW: 61 kDa	

Applications

Tested Applications:
WB, IHC, IF/ICC, FC (Intra), IP, Indirect ELISA

Species Specificity:
human, mouse, rat

Background Information

STIP1, also named as Hop and NY-REN-11. Its expression is low in the hypothalamus. STIP1 has some isoforms with MW 62 kDa, 68 kDa and 59 kDa. Acts as a co-chaperone for HSP90AA1. Mediates the association of the molecular chaperones HSPA8/HSC70 and HSP90. Probably forms a complex composed of chaperones HSP90 and HSP70, co-chaperones STIP1/HOP, CDC37, PPP5C, PTGES3/p23, TSC1 and client protein TSC2. STIP1 interacts with PACRG, EEF1AKMT3, FLCN, FNIP1 and FNIP2 (PMID:24880080).

Storage

Storage:
Store at -80°C.

The product is shipped with ice packs. Upon receipt, store it immediately at -80°C

Storage Buffer:
PBS Only

For technical support and original validation data for this product please contact:

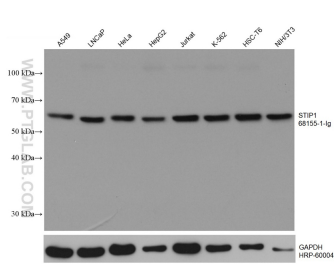
T: 4006900926

E: Proteintech-CN@ptglab.com

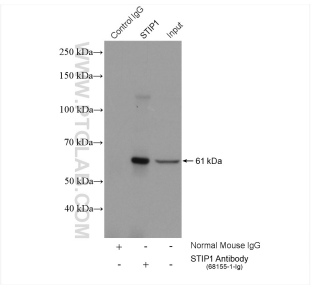
W: ptgcn.com

This product is exclusively available under Proteintech Group brand and is not available to purchase from any other manufacturer.

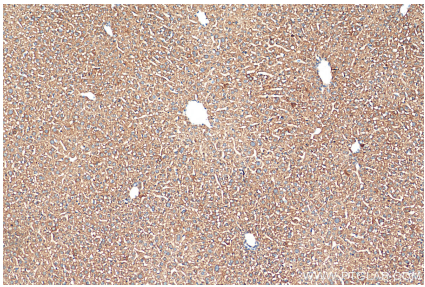
Selected Validation Data



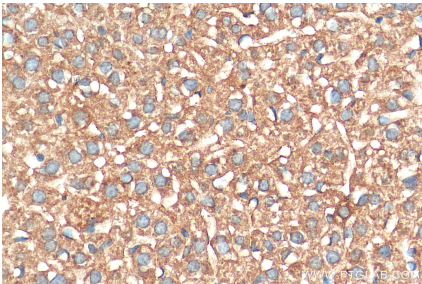
Various lysates were subjected to SDS PAGE followed by western blot with 68155-1-Ig (STIP1 antibody) at dilution of 1:10000 incubated at room temperature for 1.5 hours. The membrane was stripped and reblotted with HRP-conjugated GAPDH Monoclonal antibody (HRP-60004) as loading control. This data was developed using the same antibody clone with 68155-1-PBS in a different storage buffer formulation.



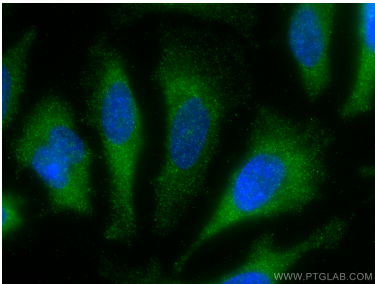
IP result of anti-STIP1 (IP:68155-1-Ig, 5ug; Detection:68155-1-Ig 1:1000) with HeLa cells lysate 1880 ug. This data was developed using the same antibody clone with 68155-1-PBS in a different storage buffer formulation.



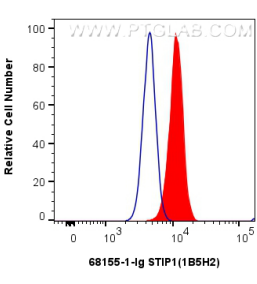
Immunohistochemical analysis of paraffin-embedded mouse liver tissue slide using 68155-1-Ig (STIP1 antibody) at dilution of 1:1000 (under 10x lens). Heat mediated antigen retrieval with Tris-EDTA buffer (pH 9.0). This data was developed using the same antibody clone with 68155-1-PBS in a different storage buffer formulation.



Immunohistochemical analysis of paraffin-embedded mouse liver tissue slide using 68155-1-Ig (STIP1 antibody) at dilution of 1:1000 (under 40x lens). Heat mediated antigen retrieval with Tris-EDTA buffer (pH 9.0). This data was developed using the same antibody clone with 68155-1-PBS in a different storage buffer formulation.



Immunofluorescent analysis of (-20°C Methanol) fixed HeLa cells using STIP1 antibody (68155-1-Ig, Clone: 1B5H2) at dilution of 1:800 and CoraLite®488-Conjugated AffiniPure Goat Anti-Mouse IgG(H+L). This data was developed using the same antibody clone with 68155-1-PBS in a different storage buffer formulation.



1x10⁶ MCF-7 cells were intracellularly stained with 0.4 ug STIP1 Monoclonal antibody (68155-1-Ig, Clone:1B5H2) and CoraLite®488-Conjugated Goat Anti-Mouse IgG(H+L) (SA00013-1)(red), or 0.4 ug Mouse IgG1 isotype control Mouse McAb (66360-1-Ig, Clone: 1F8D3) (blue). Cells were fixed with 4% PFA and permeabilized with Flow Cytometry Perm Buffer (PF00011-C). This data was developed using the same antibody clone with 68155-1-PBS in a different storage buffer