

For Research Use Only

# STIP1 Monoclonal antibody

Catalog Number: 68155-1-Ig **Featured Product**



## Basic Information

Catalog Number:

68155-1-Ig

Source:

Mouse

Isotype:

IgG1

Immunogen Catalog Number:

AG7851

GenBank Accession Number:

BC002987

GeneID (NCBI):

10963

UNIPROT ID:

P31948

Full Name:

stress-induced-phosphoprotein 1

Calculated MW:

63 kDa

Observed MW:

61 kDa

Purification Method:

Protein G purification

CloneNo.:

1B5H2

Recommended Dilutions:

WB: 1:5000-1:50000

IP: 0.5-4.0 ug for 1.0-3.0 mg of total protein lysate

IHC: 1:500-1:2000

IF/ICC: 1:400-1:1600

FC (Intra): 0.40 ug per 10<sup>6</sup> cells in a 100 µl suspension

## Applications

Tested Applications:

WB, IHC, IF/ICC, FC (Intra), IP, ELISA

Species Specificity:

human, mouse, rat

**Note-IHC: suggested antigen retrieval with TE buffer pH 9.0; (\*) Alternatively, antigen retrieval may be performed with citrate buffer pH 6.0**

Positive Controls:

**WB** : A549 cells, HEK-293 cells, LNCaP cells, HeLa cells, HepG2 cells, Jurkat cells, K-562 cells, HSC-T6 cells, NIH/3T3 cells

**IP** : HeLa cells, Jurkat cells

**IHC** : mouse liver tissue,

**IF/ICC** : HeLa cells,

**FC (Intra)** : MCF-7 cells,

## Background Information

STIP1, also named as Hop and NY-REN-11. Its expression is low in the hypothalamus. STIP1 has some isoforms with MW 62 kDa, 68 kDa and 59 kDa. Acts as a co-chaperone for HSP90AA1. Mediates the association of the molecular chaperones HSPA8/HSC70 and HSP90. Probably forms a complex composed of chaperones HSP90 and HSP70, co-chaperones STIP1/HOP, CDC37, PPP5C, PTGES3/p23, TSC1 and client protein TSC2. STIP1 interacts with PACRG, EEF1AKMT3, FLCN, FNIP1 and FNIP2 (PMID:24880080).

## Storage

Storage:

Store at -20°C. Stable for one year after shipment.

Storage Buffer:

PBS with 0.02% sodium azide and 50% glycerol, pH7.3

Aliquoting is unnecessary for -20°C storage

For technical support and original validation data for this product please contact:

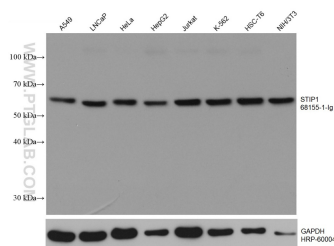
T: 4006900926

E: [Proteintech-CN@ptglab.com](mailto:Proteintech-CN@ptglab.com)

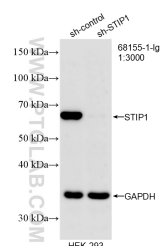
W: [ptgcn.com](http://ptgcn.com)

**This product is exclusively available under Proteintech Group brand and is not available to purchase from any other manufacturer.**

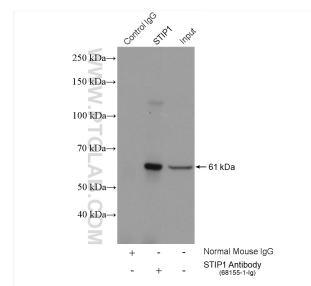
## Selected Validation Data



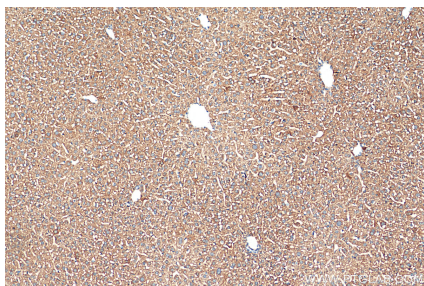
Various lysates were subjected to SDS PAGE followed by western blot with 68155-1-Ig (STIP1 antibody) at dilution of 1:10000 incubated at room temperature for 1.5 hours. The membrane was stripped and reblotted with HRP-conjugated GAPDH Monoclonal antibody (HRP-60004) as loading control.



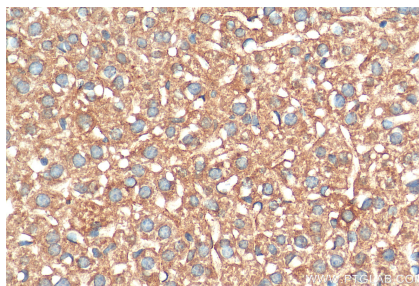
WB result of STIP1 antibody (68155-1-Ig; 1:3000; incubated at room temperature for 1.5 hours) with sh-Control and sh-STIP1 transfected HEK-293 cells.



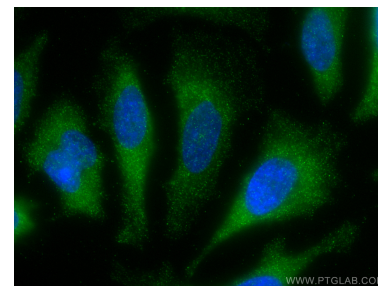
IP result of anti-STIP1 (IP: 68155-1-Ig, 5ug; Detection: 68155-1-Ig 1:1000) with HeLa cells lysate 1880 ug.



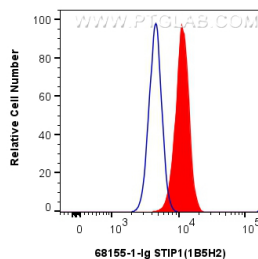
Immunohistochemical analysis of paraffin-embedded mouse liver tissue slide using 68155-1-Ig (STIP1 antibody) at dilution of 1:1000 (under 10x lens). Heat mediated antigen retrieval with Tris-EDTA buffer (pH 9.0).



Immunohistochemical analysis of paraffin-embedded mouse liver tissue slide using 68155-1-Ig (STIP1 antibody) at dilution of 1:1000 (under 40x lens). Heat mediated antigen retrieval with Tris-EDTA buffer (pH 9.0).



Immunofluorescent analysis of (-20°C Methanol) fixed HeLa cells using STIP1 antibody (68155-1-Ig, Clone: 1B5H2) at dilution of 1:800 and CoraLite®488-Conjugated AffiniPure Goat Anti-Mouse IgG(H+L).



1x10<sup>6</sup> MCF-7 cells were intracellularly stained with 0.4 ug STIP1 Monoclonal antibody (68155-1-Ig, Clone: 1B5H2) and CoraLite®488-Conjugated Goat Anti-Mouse IgG(H+L) (SA00013-1)(red), or 0.4 ug Mouse IgG1 isotype control Mouse McAb (66360-1-Ig, Clone: 1F8D3) (blue). Cells were fixed with 4% PFA and permeabilized with Flow Cytometry Perm Buffer.