

For Research Use Only

# DDAH2 Monoclonal antibody, PBS Only (Detector)

Catalog Number: 68154-1-PBS



## Basic Information

Catalog Number:

68154-1-PBS

Size:

1mg/ml

Source:

Mouse

Isotype:

IgG3

Immunogen Catalog Number:

AG7127

GenBank Accession Number:

BC001435

GeneID (NCBI):

23564

UNIPROT ID:

O95865

Full Name:

dimethylarginine

dimethylaminohydrolase 2

Calculated MW:

29 kDa

Observed MW:

30 kDa

Purification Method:

Protein A purification

CloneNo.:

1A10G3

## Applications

Tested Applications:

WB, Cytometric bead array, Indirect ELISA

Species Specificity:

human, mouse, rat, rabbit

## Background Information

The DDAH family of proteins is formed by two isoforms, DDAH-1 and DDAH-2, both of which utilize ADMA as their substrate and increase NOS activity. DDAH-2, also named as DDAH, G6A, NG30, is the most prevalent isoform in blood vessels and endothelium and is important for embryonic development. It has also been linked to other diseases, such as hypertension, cerebral hemorrhage, cardiac disease, and diabetes. In cultured human endothelial cells, DDAH-2 had been found only in the cytosol, but in the nuclei of rat vascular smooth muscle cells.

## Storage

Storage:

Store at -80°C.

The product is shipped with ice packs. Upon receipt, store it immediately at -80°C

Storage Buffer:

PBS Only

For technical support and original validation data for this product please contact:

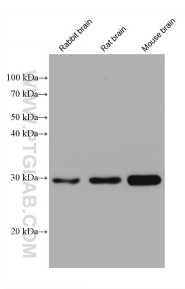
T: 4006900926

E: [Proteintech-CN@ptglab.com](mailto:Proteintech-CN@ptglab.com)

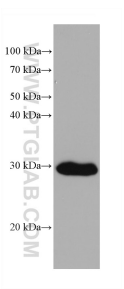
W: [ptgcn.com](http://ptgcn.com)

This product is exclusively available under Proteintech Group brand and is not available to purchase from any other manufacturer.

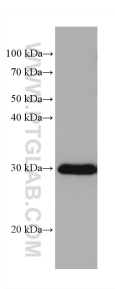
Selected Validation Data



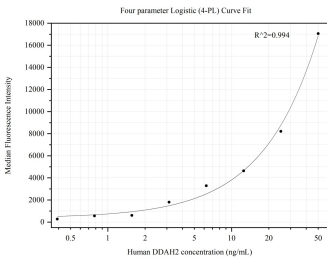
Various lysates were subjected to SDS PAGE followed by western blot with 68154-1-Ig (DDAH2 antibody) at dilution of 1:10000 incubated at room temperature for 1.5 hours. This data was developed using the same antibody clone with 68154-1-PBS in a different storage buffer formulation.



mouse retina tissue were subjected to SDS PAGE followed by western blot with 68154-1-Ig (DDAH2 antibody) at dilution of 1:10000 incubated at room temperature for 1.5 hours. This data was developed using the same antibody clone with 68154-1-PBS in a different storage buffer formulation.



rat colon tissue were subjected to SDS PAGE followed by western blot with 68154-1-Ig (DDAH2 antibody) at dilution of 1:10000 incubated at room temperature for 1.5 hours. This data was developed using the same antibody clone with 68154-1-PBS in a different storage buffer formulation.



Cytometric bead array standard curve of MP50417-2, DDAH2 Monoclonal Matched Antibody Pair, PBS Only. Capture antibody: 68154-4-PBS. Detection antibody: 68154-1-PBS. Standard:Ag7127. Range: 0.391-50 ng/mL