

For Research Use Only

EEF1G Monoclonal antibody, PBS Only

Catalog Number: 68148-1-PBS

Featured Product



Basic Information

Catalog Number:

68148-1-PBS

Source:

Mouse

Isotype:

IgG2b

Immunogen Catalog Number:

AG0218

GenBank Accession Number:

BC006520

GeneID (NCBI):

1937

UNIPROT ID:

P26641

Full Name:

eukaryotic translation elongation factor 1 gamma

Calculated MW:

50 kDa

Observed MW:

50 kDa

Purification Method:

Protein A purification

CloneNo.:

1G7C6

Applications

Tested Applications:

WB, IF/ICC, Indirect ELISA

Species Specificity:

human, pig, rabbit

Background Information

Eukaryotic translation elongation factor 1 (EEF1G, synonym: EF1G) is a subunit of the elongation factor-1 complex, which is responsible for the enzymatic delivery of aminoacyl tRNAs to the ribosome. This subunit contains an N-terminal glutathione transferase domain, which may be involved in regulating the assembly of multisubunit complexes containing this elongation factor and aminoacyl-tRNA synthetases.

Storage

Storage:

Store at -80°C.

The product is shipped with ice packs. Upon receipt, store it immediately at -80°C

Storage Buffer:

PBS only, pH7.3

For technical support and original validation data for this product please contact:

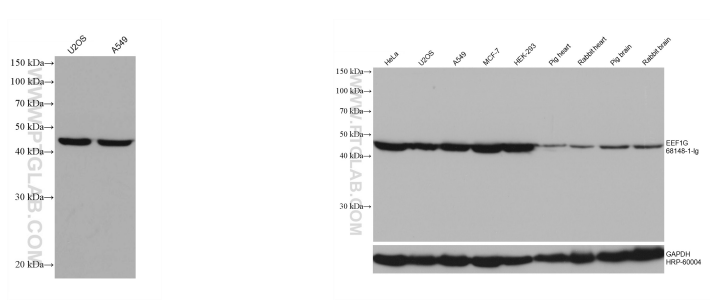
T: 4006900926

E: Proteintech-CN@ptglab.com

W: ptgcn.com

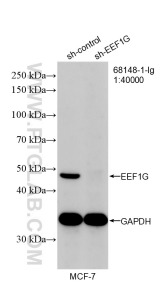
This product is exclusively available under Proteintech Group brand and is not available to purchase from any other manufacturer.

Selected Validation Data

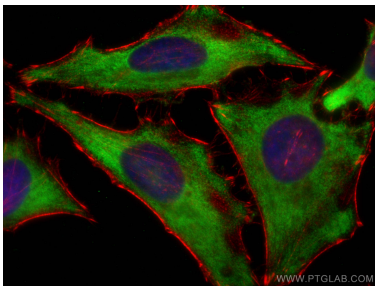


Various lysates were subjected to SDS PAGE followed by western blot with 68148-1-Ig (EEF1G antibody) at dilution of 1:10000 incubated at room temperature for 1.5 hours. This data was developed using the same antibody clone with 68148-1-PBS in a different storage buffer formulation.

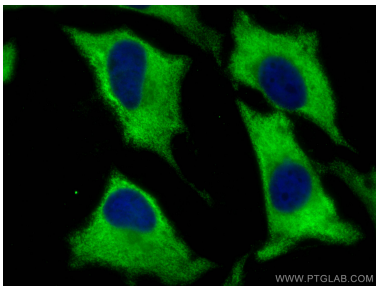
Various lysates were subjected to SDS PAGE followed by western blot with 68148-1-Ig (EEF1G antibody) at dilution of 1:10000 incubated at room temperature for 1.5 hours. The membrane was stripped and reblotted with HRP-conjugated GAPDH Monoclonal antibody (HRP-60004) as loading control. This data was developed using the same antibody clone with 68148-1-PBS in a different storage buffer formulation.



WB result of EEF1G antibody (68148-1-Ig; 1:40000; incubated at room temperature for 1.5 hours) with sh-Control and sh-EEF1G transfected MCF-7 cells. This data was developed using the same antibody clone with 68148-1-PBS in a different storage buffer formulation.



Immunofluorescent analysis of (-20°C Ethanol) fixed HeLa cells using EEF1G antibody (68148-1-Ig, Clone: 1G7C6) at dilution of 1:800 and Coralite®488-Conjugated AffiniPure Goat Anti-Mouse IgG(H+L), CL594-Phalloidin (red). This data was developed using the same antibody clone with 68148-1-PBS in a different storage buffer formulation.



Immunofluorescent analysis of (-20°C Ethanol) fixed HeLa cells using EEF1G antibody (68148-1-Ig, Clone: 1G7C6) at dilution of 1:800 and Coralite®488-Conjugated AffiniPure Goat Anti-Mouse IgG(H+L). This data was developed using the same antibody clone with 68148-1-PBS in a different storage buffer formulation.