

For Research Use Only

HBS1L Monoclonal antibody

Catalog Number: 68146-1-Ig



Basic Information

Catalog Number: 68146-1-Ig	GenBank Accession Number: BC001465	Purification Method: Protein G purification
Size: 1000 µg/ml	GeneID (NCBI): 10767	CloneNo.: 1A10C4
Source: Mouse	UNIPROT ID: Q9Y450	Recommended Dilutions: WB 1:5000-1:50000 IF 1:200-1:800
Isotype: IgG1	Full Name: HBS1-like (<i>S. cerevisiae</i>)	
Immunogen Catalog Number: AG0388	Calculated MW: 75 kDa	
	Observed MW: 75 kDa	

Applications

Tested Applications: IF/ICC, WB, ELISA	Positive Controls:
Species Specificity: Human	WB : NCI-H1299 cells, HEK-293 cells, HepG2 cells, LNCaP cells, HeLa cells, Jurkat cells, K-562 cells IF : U2OS cells,

Background Information

HBS1L (HBS1-like), also known as EF-1a or ERF5, is a 684 amino acid protein that belongs to the GTP-binding elongation factor family and exists as multiple alternatively spliced isoforms. Expressed in kidney, brain, heart, placenta, liver, muscle and pancreas, HBS1L is thought to play a role in controlling fetal hemoglobin levels, specifically influencing platelet, monocyte and erythrocyte hemoglobin content. The gene encoding HBS1L maps to a locus on human chromosome 6 that is associated with sickle cell anemia and beta-thalassemia, suggesting a role for HBS1L in the pathogenesis of blood disorders. This antibody specifically recognizes the 75kd human HBS1L protein.

Storage

Storage:
Store at -20°C. Stable for one year after shipment.
Storage Buffer:
PBS with 0.02% sodium azide and 50% glycerol pH 7.3.
Aliquoting is unnecessary for -20°C storage

For technical support and original validation data for this product please contact:

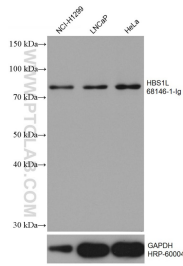
T: 4006900926

E: Proteintech-CN@ptglab.com

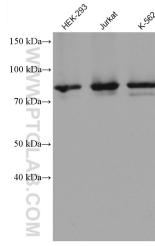
W: ptgcn.com

This product is exclusively available under Proteintech Group brand and is not available to purchase from any other manufacturer.

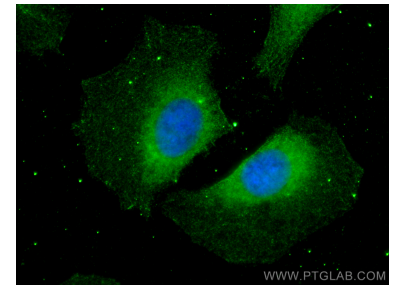
Selected Validation Data



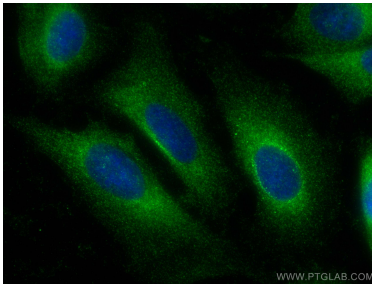
Various lysates were subjected to SDS PAGE followed by western blot with 68146-1-Ig (HBS1L antibody) at dilution of 1:10000 incubated at room temperature for 1.5 hours. The membrane was stripped and rebotted with HRP-conjugated GAPDH Monoclonal antibody (HRP-60004) as loading control.



Various lysates were subjected to SDS PAGE followed by western blot with 68146-1-Ig (HBS1L antibody) at dilution of 1:10000 incubated at room temperature for 1.5 hours.



Immunofluorescent analysis of (-20°C Methanol) fixed U2OS cells using HBS1L antibody (68146-1-Ig, Clone: 1A10C4) at dilution of 1:400 and CoraLite®488-Conjugated AffiniPure Goat Anti-Mouse IgG(H+L).



Immunofluorescent analysis of (-20°C Ethanol) fixed U2OS cells using HBS1L antibody (68146-1-Ig, Clone: 1A10C4) at dilution of 1:800 and CoraLite®488-Conjugated AffiniPure Goat Anti-Mouse IgG(H+L).