

For Research Use Only

ARPC2 Monoclonal antibody

Catalog Number: 68145-1-Ig



Basic Information

Catalog Number:

68145-1-Ig

Size:

1000 µg/ml

Source:

Mouse

Isotype:

IgG1

Immunogen Catalog Number:

AG7082

GenBank Accession Number:

BC000590

GeneID (NCBI):

10109

UNIPROT ID:

O15144

Full Name:

actin related protein 2/3 complex,
subunit 2, 34kDa

Calculated MW:

34 kDa

Observed MW:

34 kDa

Purification Method:

Protein A purification

CloneNo.:

1D8E3

Recommended Dilutions:

WB 1:5000-1:50000

IHC 1:1000-1:4000

IF 1:1000-1:4000

Applications

Tested Applications:

WB, IHC, IF/ICC, FC, ELISA

Species Specificity:

Human, mouse, rat, pig, rabbit

**Note-IHC: suggested antigen retrieval with
TE buffer pH 9.0; (*) Alternatively, antigen
retrieval may be performed with citrate
buffer pH 6.0**

Positive Controls:

WB : HeLa cells, HEK-293 cells, HepG2 cells, K-562
cells, human peripheral blood platelets, pig brain
tissue, rabbit brain tissue, rat brain tissue, mouse brain
tissue

IHC : human stomach cancer tissue,

IF : HeLa cells,

Background Information

Storage

Storage:

Store at -20°C. Stable for one year after shipment.

Storage Buffer:

PBS with 0.02% sodium azide and 50% glycerol pH 7.3.

Aliquoting is unnecessary for -20°C storage

For technical support and original validation data for this product please contact:

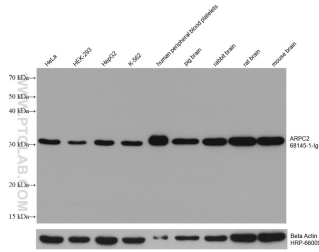
T: 4006900926

E: Proteintech-CN@ptglab.com

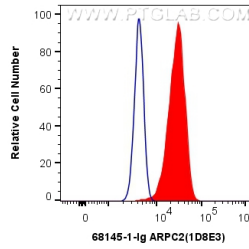
W: ptgcn.com

This product is exclusively available under Proteintech Group brand and is not available to purchase from any other manufacturer.

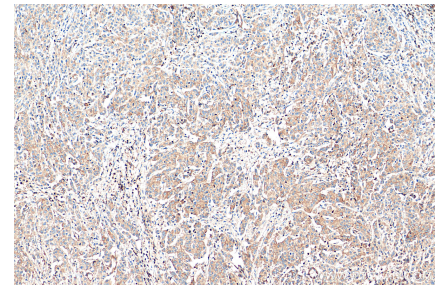
Selected Validation Data



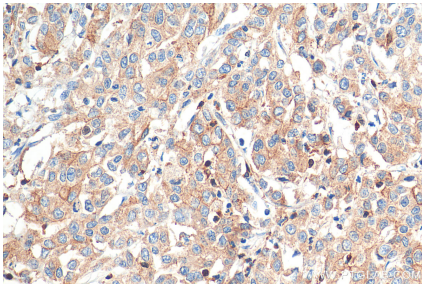
Various lysates were subjected to SDS PAGE followed by western blot with 68145-1-Ig (ARPC2 antibody) at dilution of 1:20000 incubated at room temperature for 1.5 hours. The membrane was stripped and reblotted with HRP-conjugated Beta Actin Monoclonal antibody (HRP-66009) as loading control.



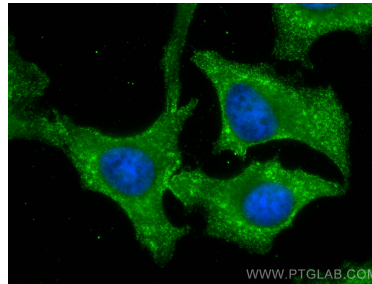
1×10^6 HeLa cells were intracellularly stained with 0.4 ug Anti-Human ARPC2 (68145-1-Ig, Clone:1D8E3) and CoraLite®488-Conjugated AffiniPure Goat Anti-Mouse IgG(H+L) at dilution 1:1000 (red), or 0.4 ug Mouse IgG1 Isotype Control (MOPC-21) (65124-1-Ig, Clone: MOPC-21) (blue). Cells were fixed with 4% PFA and permeabilized with Flow Cytometry Perm Buffer (PF00011-C).



Immunohistochemical analysis of paraffin-embedded human stomach cancer tissue slide using 68145-1-Ig (ARPC2 antibody) at dilution of 1:2000 (under 10x lens). Heat mediated antigen retrieval with Tris-EDTA buffer (pH 9.0).



Immunohistochemical analysis of paraffin-embedded human stomach cancer tissue slide using 68145-1-Ig (ARPC2 antibody) at dilution of 1:2000 (under 40x lens). Heat mediated antigen retrieval with Tris-EDTA buffer (pH 9.0).



Immunofluorescent analysis of (-20°C Methanol) fixed HeLa cells using ARPC2 antibody (68145-1-Ig, Clone: 1D8E3) at dilution of 1:2000 and CoraLite®488-Conjugated AffiniPure Goat Anti-Mouse IgG(H+L).