

For Research Use Only

# MYL6 Monoclonal antibody

Catalog Number: 68142-1-Ig

Featured Product

2 Publications



## Basic Information

Catalog Number:

68142-1-Ig

Size:

1000 µg/ml

Source:

Mouse

Isotype:

IgG1

Immunogen Catalog Number:

AG13091

GenBank Accession Number:

BC006781

GeneID (NCBI):

4637

UNIPROT ID:

P60660

Full Name:

myosin, light chain 6, alkali, smooth muscle and non-muscle

Calculated MW:

17 kDa

Observed MW:

17-25 kDa

Purification Method:

Protein G purification

CloneNo.:

2G4C9

Recommended Dilutions:

WB 1:5000-1:50000

IHC 1:1000-1:4000

IF/ICC 1:500-1:2000

## Applications

Tested Applications:

WB, IHC, IF/ICC, ELISA

Cited Applications:

WB, IHC

Species Specificity:

Human, mouse, rat, pig, rabbit

Cited Species:

human, mouse

Positive Controls:

WB : pig heart tissue, A549 cells, rabbit heart tissue, rat heart tissue, mouse heart tissue

IHC : human colon tissue, rat heart tissue, mouse skeletal muscle tissue, rat skeletal muscle tissue, human kidney tissue, mouse heart tissue

IF/ICC : HeLa cells,

**Note-IHC: suggested antigen retrieval with *TE buffer pH 9.0*; (\*) Alternatively, antigen retrieval may be performed with *citrate buffer pH 6.0***

## Background Information

Myosin is a hexameric ATPase cellular motor protein. It is composed of two heavy chains, two nonphosphorylatable alkali light chains, and two phosphorylatable regulatory light chains. MYL6 (Myosin light polypeptide 6), encodes a myosin alkali light chain that is expressed in smooth muscle and non-muscle tissues. Expression of MYL6 is high in fibroblasts and myoblasts (PMID:8188229, PubMed:2304459, PMID:2722814).

## Notable Publications

Author	Pubmed ID	Journal	Application
Weixing Yang	39579820	Int J Biol Macromol	IHC
Kangnan Zhang	39146597	Transl Oncol	WB,IHC

## Storage

Storage:

Store at -20°C. Stable for one year after shipment.

Storage Buffer:

PBS with 0.02% sodium azide and 50% glycerol pH 7.3.

Aliquoting is unnecessary for -20°C storage

For technical support and original validation data for this product please contact:

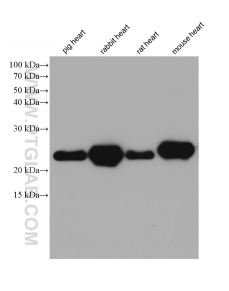
T: 4006900926

E: Proteintech-CN@ptglab.com

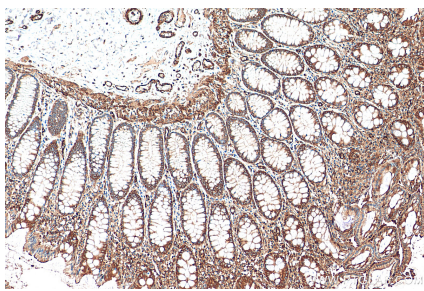
W: ptgcn.com

**This product is exclusively available under Proteintech Group brand and is not available to purchase from any other manufacturer.**

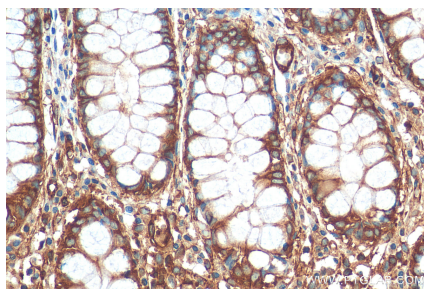
Selected Validation Data



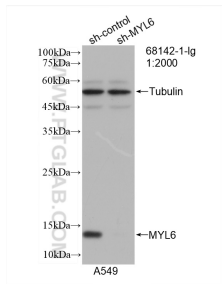
Various lysates were subjected to SDS PAGE followed by western blot with 68142-1-Ig (MYL6 antibody) at dilution of 1:20000 incubated at room temperature for 1.5 hours.



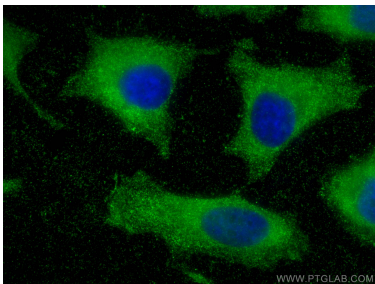
Immunohistochemical analysis of paraffin-embedded human colon tissue slide using 68142-1-Ig (MYL6 antibody) at dilution of 1:2000 (under 10x lens). Heat mediated antigen retrieval with Tris-EDTA buffer (pH 9.0).



Immunohistochemical analysis of paraffin-embedded human colon tissue slide using 68142-1-Ig (MYL6 antibody) at dilution of 1:2000 (under 40x lens). Heat mediated antigen retrieval with Tris-EDTA buffer (pH 9.0).



WB result of MYL6 antibody (68142-1-Ig; 1:2000; incubated at room temperature for 1.5 hours) with sh-Control and sh-MYL6 transfected A549 cells.



Immunofluorescent analysis of (-20°C Methanol) fixed HeLa cells using MYL6 antibody (68142-1-Ig, Clone: 2G4C9 ) at dilution of 1:1000 and Coralite®488-Conjugated Goat Anti-Mouse IgG(H+L).