

For Research Use Only

UBE2D1/2/3/4 Monoclonal antibody, PBS Only



Catalog Number: 68138-1-PBS

Basic Information

Catalog Number: 68138-1-PBS	GenBank Accession Number: BC003395	Purification Method: Protein A purification
Size: 1 mg/ml	GeneID (NCBI): 7323	CloneNo.: 1C7D12
Source: Mouse	UNIPROT ID: P61077	
Isotype: IgG1	Full Name: ubiquitin-conjugating enzyme E2D 3 (UBC4/5 homolog, yeast)	
Immunogen Catalog Number: AG2278	Calculated MW: 17 kDa	
	Observed MW: 17 kDa	

Applications

Tested Applications:
WB, Indirect ELISA, IF

Species Specificity:
Human, Mouse, Rat

Background Information

Ubiquitination is a post-translational modification pathway or is part of the specific protein-degradation pathway by the 26S proteasome. Ubiquitination of a target protein involves multistep enzymatic reaction catalyzed by a cascade of enzymes including Ub-activating enzymes (E1s), Ub-conjugating enzymes (E2s) and Ub ligases (E3s) (PMID: 23542885). UBE2D family, which has 4 members named as UBE2D1/2/3/4, is an E2 ubiquitin-conjugating enzyme family in the ubiquitin-proteasome system. This antibody can recognize all the four members of UBE2D due to the high homology.

Storage

Storage:
Store at -80°C.

The product is shipped with ice packs. Upon receipt, store it immediately at -80°C

Storage Buffer:
PBS Only

For technical support and original validation data for this product please contact:

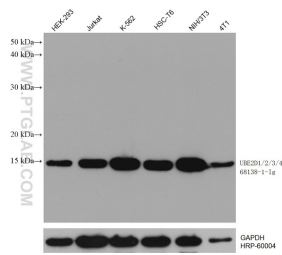
T: 4006900926

E: Proteintech-CN@ptglab.com

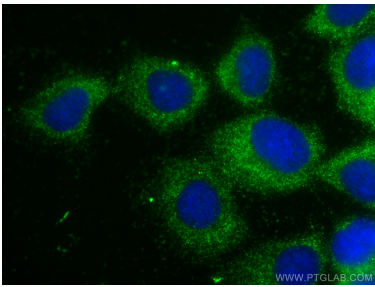
W: ptgcn.com

This product is exclusively available under Proteintech Group brand and is not available to purchase from any other manufacturer.

Selected Validation Data



Various lysates were subjected to SDS PAGE followed by western blot with 68138-1-Ig (UBE2D3 antibody) at dilution of 1:10000 incubated at room temperature for 1.5 hours. The membrane was stripped and reblotted with HRP-conjugated GAPDH Monoclonal antibody (HRP-60004) as loading control. This data was developed using the same antibody clone with 68138-1-PBS in a different storage buffer formulation.



Immunofluorescent analysis of (-20°C Methanol) fixed A431 cells using UBE2D1/2/3/4 antibody (68138-1-Ig, Clone: 1C7D12) at dilution of 1:800 and CoraLite® 488-Conjugated AffiniPure Goat Anti-Mouse IgG(H+L). This data was developed using the same antibody clone with 68138-1-PBS in a different storage buffer formulation.