

For Research Use Only

PLA2G4A Monoclonal antibody

Catalog Number: 68133-1-Ig



Basic Information

Catalog Number: 68133-1-Ig	GenBank Accession Number: BC114340	Purification Method: Protein A purification
Size: 1000 µg/ml	GeneID (NCBI): 5321	CloneNo.: 2D10H8
Source: Mouse	UNIPROT ID: P47712	Recommended Dilutions: WB 1:5000-1:50000 IHC 1:500-1:2000 IF 1:200-1:800
Isotype: IgG1	Full Name: phospholipase A2, group IVA (cytosolic, calcium-dependent)	
Immunogen Catalog Number: AG32674	Calculated MW: 749 aa, 85 kDa	
	Observed MW: 85-100 kDa	

Applications

Tested Applications:
WB, IF/ICC, IHC, ELISA

Species Specificity:
Human, mouse

Note-IHC: suggested antigen retrieval with TE buffer pH 9.0; (*) Alternatively, antigen retrieval may be performed with citrate buffer pH 6.0

Positive Controls:

WB : HEK-293 cells, HeLa cells, NIH/3T3 cells, A549 cells, K-562 cells

IHC : human lung cancer tissue,

IF : HeLa cells,

Background Information

Storage

Storage:
Store at -20°C. Stable for one year after shipment.
Storage Buffer:
PBS with 0.02% sodium azide and 50% glycerol pH 7.3.
Aliquoting is unnecessary for -20°C storage

For technical support and original validation data for this product please contact:

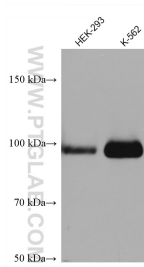
T: 4006900926

E: Proteintech-CN@ptglab.com

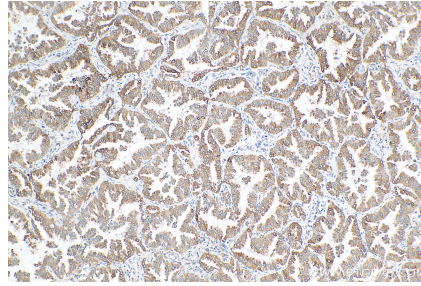
W: ptgcn.com

This product is exclusively available under Proteintech Group brand and is not available to purchase from any other manufacturer.

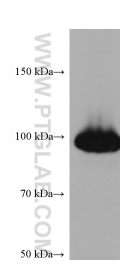
Selected Validation Data



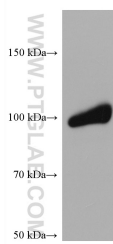
Various lysates were subjected to SDS PAGE followed by western blot with 68133-1-Ig (PLA2G4A antibody) at dilution of 1:10000 incubated at room temperature for 1.5 hours.



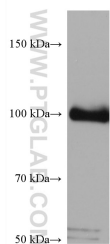
Immunohistochemical analysis of paraffin-embedded human lung cancer tissue slide using 68133-1-Ig (PLA2G4A antibody) at dilution of 1:1000 (under 10x lens). Heat mediated antigen retrieval with Tris-EDTA buffer (pH 9.0).



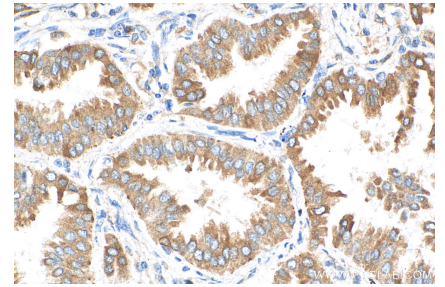
HeLa cells were subjected to SDS PAGE followed by western blot with 68133-1-Ig (PLA2G4A antibody) at dilution of 1:10000 incubated at room temperature for 1.5 hours.



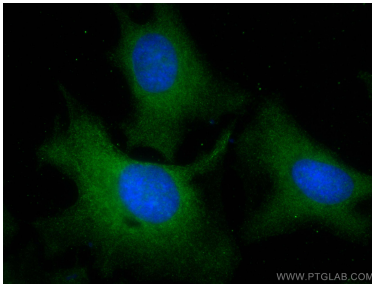
NIH/3T3 cells were subjected to SDS PAGE followed by western blot with 68133-1-Ig (PLA2G4A antibody) at dilution of 1:10000 incubated at room temperature for 1.5 hours.



A549 cells were subjected to SDS PAGE followed by western blot with 68133-1-Ig (PLA2G4A antibody) at dilution of 1:10000 incubated at room temperature for 1.5 hours.



Immunohistochemical analysis of paraffin-embedded human lung cancer tissue slide using 68133-1-Ig (PLA2G4A antibody) at dilution of 1:1000 (under 40x lens). Heat mediated antigen retrieval with Tris-EDTA buffer (pH 9.0).



Immunofluorescent analysis of (-20°C Methanol) fixed HeLa cells using PLA2G4A antibody (68133-1-Ig, Clone: 2D10H8) at dilution of 1:400 and CoraLite®488-Conjugated AffiniPure Goat Anti-Mouse IgG(H+L).