

For Research Use Only

FITC Monoclonal antibody

Catalog Number: 68132-1-Ig **1 Publications**



Basic Information

Catalog Number:

68132-1-Ig

Size:

1000 µg/ml

Source:

Mouse

Isotype:

IgG2a

GenBank Accession Number:

GeneID (NCBI):

Full Name:

Purification Method:

Protein A purification

CloneNo.:

3C10A1

Recommended Dilutions:

WB 1:5000-1:50000

Applications

Tested Applications:

WB, ELISA

Cited Applications:

WB

Species Specificity:

chemical compound, fitc

Cited Species:

mouse

Positive Controls:

WB : FITC-TDP43, FITC-Ag1231, BSA

Background Information

Fluorescein isothiocyanate (FITC) is a derivative of fluorescein used in wide-ranging applications. It is the original fluorescein molecule functionalized with an isothiocyanate reactive group ($-N=C=S$), replacing a hydrogen atom on the bottom ring of the structure. It is typically available as a mixture of isomers, fluorescein 5-isothiocyanate (5-FITC) and fluorescein 6-isothiocyanate (6-FITC). FITC is reactive towards nucleophiles including amine and sulfhydryl groups on proteins. CAS number of FITC: 27072-45-3 (mixture); 3326-32-7, 5-isomer; 18861-78-4 (6-isomer). This mouse monoclonal antibody detects the FITC only. This antibody can be coated in the plate to capture the FITC conjugated protein or antibody.

Notable Publications

Author	Pubmed ID	Journal	Application
Ying Liu	39514743	Environ Health Perspect	WB

Storage

Storage:

Store at -20°C. Stable for one year after shipment.

Storage Buffer:

PBS with 0.02% sodium azide and 50% glycerol pH 7.3.

Aliquoting is unnecessary for -20°C storage

For technical support and original validation data for this product please contact:

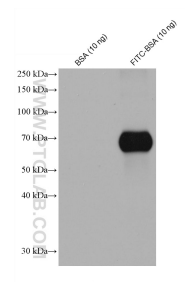
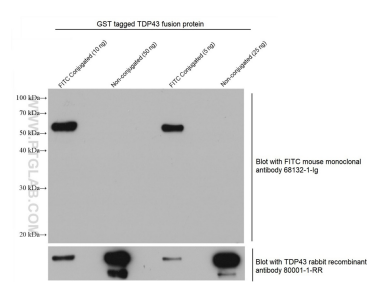
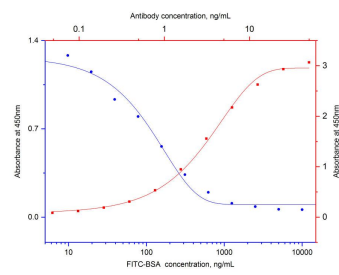
T: 4006900926

E: Proteintech-CN@ptglab.com

W: ptgcn.com

This product is exclusively available under Proteintech Group brand and is not available to purchase from any other manufacturer.

Selected Validation Data



Indirect ELISA and competitive ELISA results show that this antibody is specific to FITC. Indirect ELISA was performed by coating FITC conjugated BSA at 0ng/well followed by blocking with 1% BSA. Serial diluted primary antibody was added to the plates and incubated at 37°C. HRP-goat anti-mouse was used for detection (red curve, refer to top X-right Y axis). Competitive ELISA was performed similarly except that different concentration of FITC (active group been



WB result of FITC antibody (68132-1-Ig; 1:40000; incubated at room temperature for 1.5 hours) with FITC conjugated protein and un-conjugated protein as negative control. Antibody to TDP-43 as the positive control to target protein.

WB results of FITC antibody (68132-1-Ig, 1:10000) with BSA and FITC conjugated BSA.