

MYDGF/C19orf10 Monoclonal antibody

Catalog Number: 68131-1-Ig

Basic Information

Catalog Number: 68131-1-Ig	GenBank Accession Number: BC010129	Purification Method: Protein G purification
Size: 1000 µg/ml	GeneID (NCBI): 56005	CloneNo.: 1H8F4
Source: Mouse	UNIPROT ID: Q969H8	Recommended Dilutions: WB 1:5000-1:50000 IHC 1:500-1:2000 IF/ICC 1:400-1:1600
Isotype: IgG1	Full Name: chromosome 19 open reading frame 10	
Immunogen Catalog Number: AG13438	Calculated MW: 173 aa, 19 kDa Observed MW: 15-19 kDa	

Applications

Tested Applications: WB, IHC, IF/ICC, FC (Intra), ELISA	Positive Controls:
Species Specificity: human, mouse, rat	WB : A549 cells, LNCaP cells, HeLa cells, HepG2 cells, Jurkat cells, K-562 cells, HSC-T6 cells, NIH/3T3 cells
Note-IHC: suggested antigen retrieval with TE buffer pH 9.0; (*) Alternatively, antigen retrieval may be performed with citrate buffer pH 6.0	IHC : human liver cancer tissue, IF/ICC : HepG2 cells,

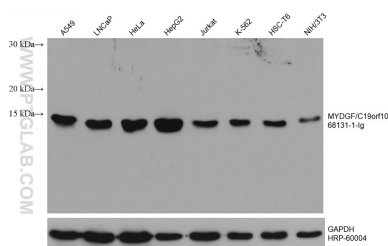
Background Information

Myeloid-derived growth factor (MYDGF), also named as chromosome 19 open reading frame 10 (C19orf10), is an FLS-derived protein that is secreted into the synovial fluid. MYDGF as a paracrine-acting protein secreted from monocytes/macrophages that improves tissue repair and heart function after myocardial infarction. MYDGF has been reported to regulates neutrophil motility in interstitial tissue damage(PMID: 34047769).

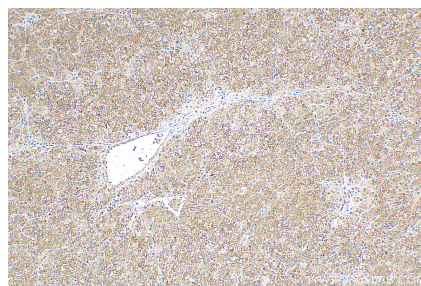
Storage

Storage:
Store at -20°C. Stable for one year after shipment.
Storage Buffer:
PBS with 0.02% sodium azide and 50% glycerol pH 7.3.
Aliquoting is unnecessary for -20°C storage

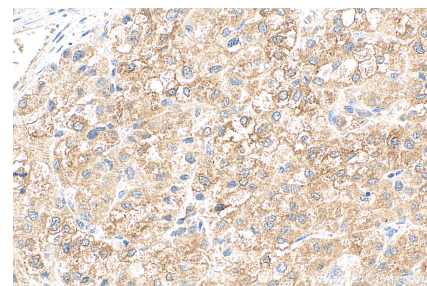
Selected Validation Data



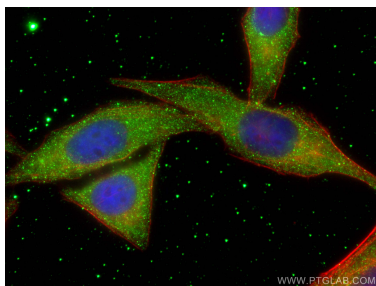
Various lysates were subjected to SDS PAGE followed by western blot with 68131-1-Ig (MYDGF/C19orf10 antibody) at dilution of 1:10000 incubated at room temperature for 1.5 hours. The membrane was stripped and reblotted with HRP-conjugated GAPDH Monoclonal antibody (HRP-60004) as loading control.



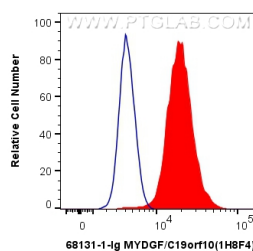
Immunohistochemical analysis of paraffin-embedded human liver cancer tissue slide using 68131-1-Ig (MYDGF/C19orf10 antibody) at dilution of 1:1000 (under 10x lens). Heat mediated antigen retrieval with Tris-EDTA buffer (pH 9.0).



Immunohistochemical analysis of paraffin-embedded human liver cancer tissue slide using 68131-1-Ig (MYDGF/C19orf10 antibody) at dilution of 1:1000 (under 40x lens). Heat mediated antigen retrieval with Tris-EDTA buffer (pH 9.0).



Immunofluorescent analysis of (-20°C Ethanol) fixed HepG2 cells using MYDGF/C19orf10 antibody (68131-1-Ig, Clone: 1H8F4) at dilution of 1:800 and CoraLite®488-Conjugated AffiniPure Goat Anti-Mouse IgG(H+L), CL594-Phalloidin (red).



1X10⁶ HepG2 cells were intracellularly stained with 0.4 ug Anti-Human MYDGF/C19orf10 (68131-1-Ig, Clone:1H8F4) and CoraLite®488-Conjugated AffiniPure Goat Anti-Mouse IgG(H+L) at dilution 1:1000 (red), or 0.4 ug Mouse IgG1 Isotype Control (MOPC-21) (65124-1-Ig, Clone: MOPC-21) (blue). Cells were fixed with 4% PFA and permeabilized with Flow Cytometry Perm Buffer (PF00011-C).