

RYBP Monoclonal antibody, PBS Only

Catalog Number: 68130-1-PBS

Basic Information

Catalog Number:

68130-1-PBS

Size:

1 mg/ml

Source:

Mouse

Isotype:

IgG1

Immunogen Catalog Number:

AG31715

GenBank Accession Number:

BC014959

GeneID (NCBI):

23429

UNIPROT ID:

Q8N488

Full Name:

RING1 and YY1 binding protein

Calculated MW:

228 aa, 25 kDa

Observed MW:

32 kDa

Purification Method:

Protein G purification

CloneNo.:

2C6G7

Applications

Tested Applications:

WB, Indirect ELISA

Species Specificity:

Human, mouse

Background Information

Polycomb repressive complexes (PRCs) are important chromatin regulators of embryonic stem (ES) cell function [PMID:22269950]. RYBP binds Polycomb H2A monoubiquitin ligases Ring1A and Ring1B and has been suggested to assist PRC localization to their targets. RYBP, firstly identified as a direct interactor with Ring1A, acts as transcriptional repressor in reporter assays, both in tissue culture cells and in the fly [PMID:16125914]

Storage

Storage:

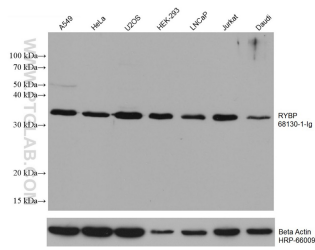
Store at -80°C.

The product is shipped with ice packs. Upon receipt, store it immediately at -80°C

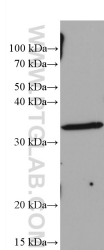
Storage Buffer:

PBS Only

Selected Validation Data



Various lysates were subjected to SDS PAGE followed by western blot with 68130-1-Ig (RYBP antibody) at dilution of 1:20000 incubated at room temperature for 1.5 hours. The membrane was stripped and reblotted with HRP-conjugated Beta Actin Monoclonal antibody (HRP-66009) as loading control. This data was developed using the same antibody clone with 68130-1-PBS in a different storage buffer formulation.



RAW 264.7 cells were subjected to SDS PAGE followed by western blot with 68130-1-Ig (RYBP antibody) at dilution of 1:20000 incubated at room temperature for 1.5 hours. This data was developed using the same antibody clone with 68130-1-PBS in a different storage buffer formulation.