

RYBP Monoclonal antibody

Catalog Number: 68130-1-Ig

Basic Information

Catalog Number:

68130-1-Ig

Size:

1000 µg/ml

Source:

Mouse

Isotype:

IgG1

Immunogen Catalog Number:

AG31715

GenBank Accession Number:

BC014959

GeneID (NCBI):

23429

UNIPROT ID:

Q8N488

Full Name:

RING1 and YY1 binding protein

Calculated MW:

228 aa, 25 kDa

Observed MW:

32 kDa

Purification Method:

Protein G purification

CloneNo.:

2C6G7

Recommended Dilutions:

WB 1:5000-1:50000

Applications

Tested Applications:

WB, ELISA

Species Specificity:

Human, mouse

Positive Controls:

WB : A549 cells, RAW 264.7 cells, HeLa cells, U2OS cells, HEK-293 cells, LNCaP cells, Jurkat cells, Daudi cells

Background Information

Polycomb repressive complexes (PRCs) are important chromatin regulators of embryonic stem (ES) cell function [PMID:22269950]. RYBP binds Polycomb H2A monoubiquitin ligases Ring1A and Ring1B and has been suggested to assist PRC localization to their targets. RYBP, firstly identified as a direct interactor with Ring1A, acts as transcriptional repressor in reporter assays, both in tissue culture cells and in the fly [PMID:16125914]

Storage

Storage:

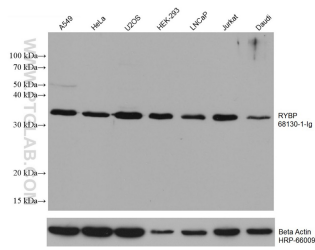
Store at -20°C. Stable for one year after shipment.

Storage Buffer:

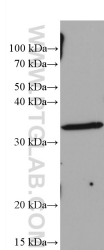
PBS with 0.02% sodium azide and 50% glycerol pH 7.3.

Aliquoting is unnecessary for -20°C storage

Selected Validation Data



Various lysates were subjected to SDS PAGE followed by western blot with 68130-1-Ig (RYBP antibody) at dilution of 1:20000 incubated at room temperature for 1.5 hours. The membrane was stripped and reblotted with HRP-conjugated Beta Actin Monoclonal antibody (HRP-66009) as loading control.



RAW 264.7 cells were subjected to SDS PAGE followed by western blot with 68130-1-Ig (RYBP antibody) at dilution of 1:20000 incubated at room temperature for 1.5 hours.