

PIN1 Monoclonal antibody, PBS Only

Catalog Number: 68127-1-PBS

Basic Information

Catalog Number:

68127-1-PBS

Size:

1 mg/ml

Source:

Mouse

Isotype:

IgG1

Immunogen Catalog Number:

AG0767

GenBank Accession Number:

BC002899

GeneID (NCBI):

5300

UNIPROT ID:

Q13526

Full Name:

peptidylprolyl cis/trans isomerase,
NIMA-interacting 1

Calculated MW:

18 kDa

Observed MW:

18 kDa

Purification Method:

Protein G purification

CloneNo.:

1F4G3

Applications

Tested Applications:

WB, IP, Indirect ELISA, IF

Species Specificity:

Human, mouse, rat, rabbit, pig

Background Information

PIN1 (Peptidyl-prolyl cis-trans isomerase NIMA-interacting 1) is essential for mitosis progression in yeast cells and is hypothesized to perform the same role in mammalian cells. It might regulate cellular processes distinct from the cell cycle itself, such as terminal differentiation through a modulation of differentiation-specific gene expression (PMID: 20801874). It colocalizes with NEK6 in the nucleus. Pin1 inhibition simultaneously blocks multiple cancer pathways, disrupts the desmoplastic and immunosuppressive TME, and upregulates PD-L1 and ENT1, rendering pancreatic ductal adenocarcinoma (PDAC) eradicable by immunochemotherapy (PMID: 34388391).

Storage

Storage:

Store at -80°C.

The product is shipped with ice packs. Upon receipt, store it immediately at -80°C

Storage Buffer:

PBS Only

For technical support and original validation data for this product please contact:

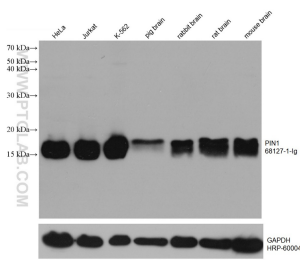
T: 4006900926

E: Proteintech-CN@ptglab.com

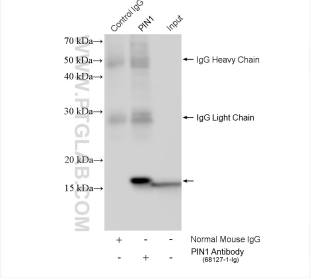
W: ptgcn.com

This product is exclusively available under Proteintech Group brand and is not available to purchase from any other manufacturer.

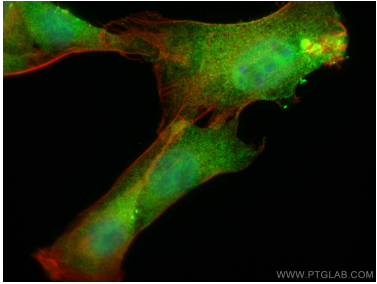
Selected Validation Data



Various lysates were subjected to SDS PAGE followed by western blot with 68127-1-Ig (PIN1 antibody) at dilution of 1:10000 incubated at room temperature for 1.5 hours. The membrane was stripped and reblotted with HRP-conjugated GAPDH Monoclonal antibody (HRP-60004) as loading control. This data was developed using the same antibody clone with 68127-1-PBS in a different storage buffer formulation.



IP result of anti-PIN1 (IP: 68127-1-Ig, 4ug; Detection: 68127-1-Ig 1:2000) with HepG2 cells lysate 1920 ug. This data was developed using the same antibody clone with 68127-1-PBS in a different storage buffer formulation.



Immunofluorescent analysis of (4% PFA) fixed NIH/3T3 cells using PIN1 antibody (68127-1-Ig, Clone: 1F4G3) at dilution of 1:400 and CoraLite®488-Conjugated AffiniPure Goat Anti-Mouse IgG(H+L), CL594-Phalloidin (red). This data was developed using the same antibody clone with 68127-1-PBS in a different storage buffer formulation.