

# RBP5 Monoclonal antibody, PBS Only

Catalog Number: 68126-1-PBS

## Basic Information

**Catalog Number:**

68126-1-PBS

**Size:**

1 mg/ml

**Source:**

Mouse

**Isotype:**

IgG1

**Immunogen Catalog Number:**

AG24562

**GenBank Accession Number:**

BC029355

**GeneID (NCBI):**

83758

**UNIPROT ID:**

P82980

**Full Name:**

retinol binding protein 5, cellular

**Calculated MW:**

135 aa, 16 kDa

**Observed MW:**

16-18 kDa

**Purification Method:**

Protein G purification

**CloneNo.:**

1G7E2

## Applications

**Tested Applications:**

WB, Indirect ELISA, IF

**Species Specificity:**

Human, pig

## Background Information

RBP5 (CRBP III) belongs to the fatty-acid binding protein (FABP) family. Human liver and kidney contain the highest levels of CRBP III mRNA, and CRBP III is as a major human intracellular carrier of retinol (PMID:11274389). RBP5 iron response are reversible by genetic complementation. And increased RBP5 expression occurs by a post-transcriptional feedback mechanism whereby RBP5 interacts with its own, and with PAP2 mRNAs. RBP5 is the most significant of the proteins upregulated by iron starvation (PMID:34161395). RBP5 has an estimated molecular mass (15.9 kDa) typical of this protein superfamily (PMID:11274389).

## Storage

**Storage:**

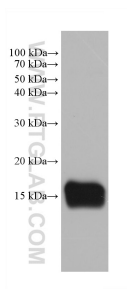
Store at -80°C.

**The product is shipped with ice packs. Upon receipt, store it immediately at -80°C**

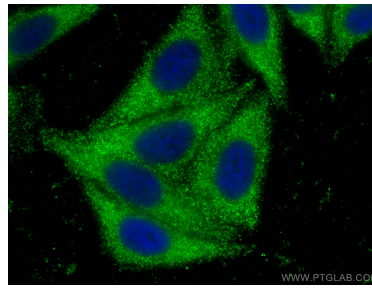
**Storage Buffer:**

PBS Only

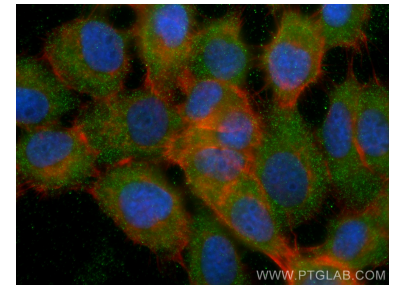
## Selected Validation Data



pig kidney tissue were subjected to SDS PAGE followed by western blot with 68126-1-Ig (RBP5 antibody) at dilution of 1:10000 incubated at room temperature for 1.5 hours. This data was developed using the same antibody clone with 68126-1-PBS in a different storage buffer formulation.



Immunofluorescent analysis of (-20°C Ethanol) fixed HepG2 cells using RBP5 antibody (68126-1-Ig, Clone: 1G7E2 ) at dilution of 1:800 and CoraLite®488-Conjugated AffiniPure Goat Anti-Mouse IgG(H+L). This data was developed using the same antibody clone with 68126-1-PBS in a different storage buffer formulation.



Immunofluorescent analysis of (-20°C Ethanol) fixed A431 cells using RBP5 antibody (68126-1-Ig, Clone: 1G7E2 ) at dilution of 1:800 and CoraLite®488-Conjugated AffiniPure Goat Anti-Mouse IgG(H+L), CL594-Phalloidin (red). This data was developed using the same antibody clone with 68126-1-PBS in a different storage buffer formulation.