

# RAP1A Monoclonal antibody

Catalog Number: 68125-1-Ig 1 Publications

## Basic Information

|  |   |  |
|--|---|--|
| <b>Catalog Number:</b><br>68125-1-Ig       | <b>GenBank Accession Number:</b><br>BC014086              | <b>Purification Method:</b><br>Protein A purification                  |
| <b>Size:</b><br>1000 µg/ml                 | <b>GeneID (NCBI):</b><br>5906                             | <b>CloneNo.:</b><br>1G12D8   |
| <b>Source:</b><br>Mouse                    | <b>UNIPROT ID:</b><br>P62834                              | <b>Recommended Dilutions:</b><br>WB 1:5000-1:50000<br>IHC 1:250-1:1000 |
| <b>Isotype:</b><br>IgG2a                   | <b>Full Name:</b><br>RAP1A, member of RAS oncogene family |  |
| <b>Immunogen Catalog Number:</b><br>AG9463 | <b>Calculated MW:</b><br>184 aa, 21 kDa                   |  |
|  | <b>Observed MW:</b><br>21 kDa                             |  |

## Applications

|  |  |
|--|--|
| <b>Tested Applications:</b><br>IHC, WB, ELISA  | <b>Positive Controls:</b>  |
| <b>Cited Applications:</b><br>WB   | <b>WB :</b> HEK-293 cells, LNCaP cells, HeLa cells, Jurkat cells, MOLT-4 cells, K-562 cells, Raji cells, HSC-T6 cells, NIH/3T3 cells |
| <b>Species Specificity:</b><br>Human, mouse, rat   | <b>IHC :</b> human liver cancer tissue,  |
| <b>Cited Species:</b><br>mouse   |  |
| <b>Note-IHC: suggested antigen retrieval with TE buffer pH 9.0; (*) Alternatively, antigen retrieval may be performed with citrate buffer pH 6.0</b> |  |

## Background Information

RAP1A(Ras-related protein Rap-1A), also known as KREV1. Induces morphological reversion of a cell line transformed by a Ras oncogene. The biological roles of RAP1A include inducing neurite outgrowth and embryonic angiogenesis(PMID: 17916086). As one member of RAS oncogene family, it is a widely expressed receptor, with high mRNA expression in many tissues, particularly abundant in the colon. In cells, RAP1A was localized in cytoplasm and cell membrane(PMID: 11359771, PMID: 11359771).

## Notable Publications

| Author     | Pubmed ID | Journal      | Application |
|------------|-----------|--------------|-------------|
| Yurong Zhu | 36999276  | Autoimmunity | WB          |

## Storage

**Storage:**  
Store at -20°C. Stable for one year after shipment.  
**Storage Buffer:**  
PBS with 0.02% sodium azide and 50% glycerol pH 7.3.  
Aliquoting is unnecessary for -20°C storage

For technical support and original validation data for this product please contact:

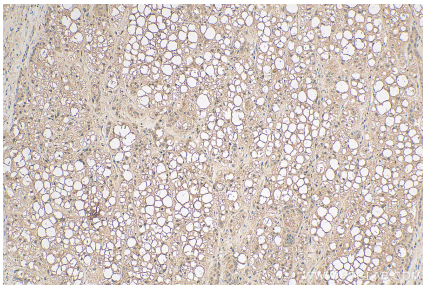
T: 4006900926

E: [Proteintech-CN@ptglab.com](mailto:Proteintech-CN@ptglab.com)

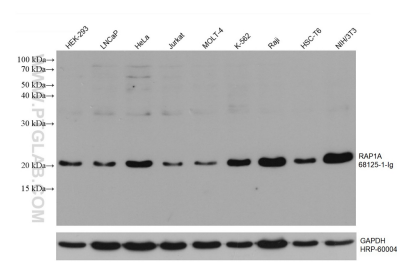
W: [ptgcn.com](http://ptgcn.com)

This product is exclusively available under Proteintech Group brand and is not available to purchase from any other manufacturer.

## Selected Validation Data



Immunohistochemical analysis of paraffin-embedded human liver cancer tissue slide using 68125-1-Ig (RAP1A antibody) at dilution of 1:500 (under 10x lens). Heat mediated antigen retrieval with Tris-EDTA buffer (pH 9.0).



Various lysates were subjected to SDS PAGE followed by western blot with 68125-1-Ig (RAP1A antibody) at dilution of 1:20000 incubated at room temperature for 1.5 hours. The membrane was stripped and reblotted with HRP-conjugated GAPDH Monoclonal antibody (HRP-60004) as loading control.