

# LPIN1 Monoclonal antibody

Catalog Number: 68124-1-Ig 2 Publications

## Basic Information

<b>Catalog Number:</b> 68124-1-Ig	<b>GenBank Accession Number:</b> BC030537	<b>Purification Method:</b> Protein A purification
<b>Size:</b> 1000 µg/ml	<b>GeneID (NCBI):</b> 23175	<b>CloneNo.:</b> 3G11B10
<b>Source:</b> Mouse	<b>UNIPROT ID:</b> Q14693	<b>Recommended Dilutions:</b> WB 1:2000-1:10000 IHC 1:2000-1:8000 IF/ICC 1:400-1:1600
<b>Isotype:</b> IgG2a	<b>Full Name:</b> lipin 1	
<b>Immunogen Catalog Number:</b> AG25813	<b>Calculated MW:</b> 890 aa, 99 kDa <b>Observed MW:</b> 130 kDa	

## Applications

<b>Tested Applications:</b> IF/ICC, IHC, WB, ELISA	<b>Positive Controls:</b>
<b>Cited Applications:</b> WB, IHC	<b>WB :</b> HepG2 cells, Jurkat cells, MOLT-4 cells, K-562 cells
<b>Species Specificity:</b> Human, Rat, Mouse	<b>IHC :</b> human liver cancer tissue, rat skeletal muscle tissue
<b>Cited Species:</b> human, rat, mouse	<b>IF/ICC :</b> NIH/3T3 cells,
<b>Note-IHC: suggested antigen retrieval with TE buffer pH 9.0; (*) Alternatively, antigen retrieval may be performed with citrate buffer pH 6.0</b>	

## Background Information

LPIN1, also named as KIAA0188, belongs to the lipin family. It is a magnesium-dependent phosphatidate phosphatase enzyme which catalyzes the conversion of phosphatidic acid to diacylglycerol during triglyceride, phosphatidylcholine and phosphatidylethanolamine biosynthesis and therefore controls the metabolism of fatty acids at different levels. LPIN1 has a molecular weight of about 99 kDa but predicted bands around 130 kDa. (PMID:20231281, PMID:29765047).

## Notable Publications

Author	Pubmed ID	Journal	Application
Sixin Chen	38570025	Food Chem Toxicol	WB, IHC
Shuxuan Li	38141939	Eur J Pharmacol	WB

## Storage

**Storage:**  
Store at -20°C. Stable for one year after shipment.  
**Storage Buffer:**  
PBS with 0.02% sodium azide and 50% glycerol pH 7.3.  
Aliquoting is unnecessary for -20°C storage

For technical support and original validation data for this product please contact:

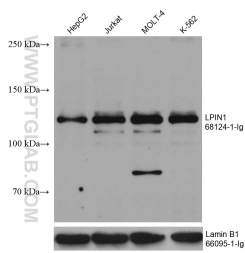
T: 4006900926

E: [Proteintech-CN@ptglab.com](mailto:Proteintech-CN@ptglab.com)

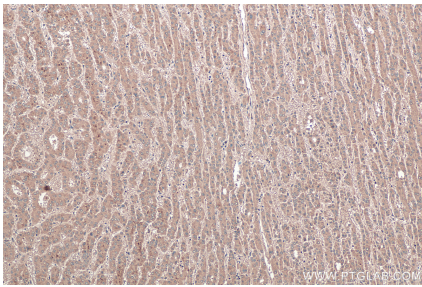
W: [ptgcn.com](http://ptgcn.com)

This product is exclusively available under Proteintech Group brand and is not available to purchase from any other manufacturer.

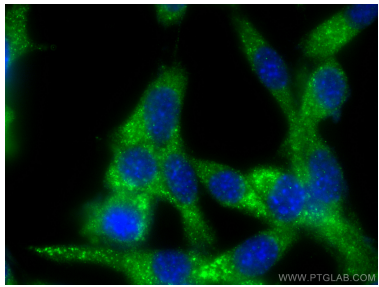
## Selected Validation Data



Various lysates were subjected to SDS PAGE followed by western blot with 68124-1-Ig (LPIN1 antibody) at dilution of 1:5000 incubated at room temperature for 1.5 hours. The membrane was stripped and reblotted with Lamin B1 Monoclonal antibody (66095-1-Ig) as loading control.



Immunohistochemical analysis of paraffin-embedded human liver cancer tissue slide using 68124-1-Ig (LPIN1 antibody) at dilution of 1:4000 (under 10x lens). Heat mediated antigen retrieval with Tris-EDTA buffer (pH 9.0).



Immunofluorescent analysis of (-20°C Methanol) fixed NIH/3T3 cells using LPIN1 antibody (68124-1-Ig, Clone: 3G11B10) at dilution of 1:800 and CoraLite®488-Conjugated AffiniPure Goat Anti-Mouse IgG(H+L).