

# PPP1CC Monoclonal antibody

Catalog Number: 68122-1-Ig

## Basic Information

**Catalog Number:**

68122-1-Ig

**Size:**

800 µg/ml

**Source:**

Mouse

**Isotype:**

IgG1

**Immunogen Catalog Number:**

AG32348

**GenBank Accession Number:**

BC014073

**GeneID (NCBI):**

5501

**UNIPROT ID:**

P36873

**Full Name:**

protein phosphatase 1, catalytic subunit, gamma isoform

**Calculated MW:**

35 kDa

**Observed MW:**

35kDa

**Purification Method:**

Protein A purification

**CloneNo.:**

2G11C3

**Recommended Dilutions:**

WB 1:2000-1:16000

IF/ICC 1:400-1:1600

## Applications

**Tested Applications:**

IF/ICC, WB, ELISA

**Species Specificity:**

Human, mouse, rat

**Positive Controls:**

**WB :** LNCaP cells, HeLa cells, HEK-293 cells, Jurkat cells, K-562 cells, HSC-T6 cells, NIH/3T3 cells

**IF/ICC :** HeLa cells, C2C12 cells

## Background Information

PPP1CC, also named as PP-1G, belongs to the PPP phosphatase family and PP-1 subfamily. Protein phosphatase 1 (PP1) is essential for cell division, and participates in the regulation of glycogen metabolism, muscle contractility and protein synthesis. It is involved in regulation of ionic conductances and long-term synaptic plasticity. PPP1CC may play an important role in dephosphorylating substrates such as the postsynaptic density-associated Ca<sup>2+</sup>/calmodulin dependent protein kinase II.

## Storage

**Storage:**

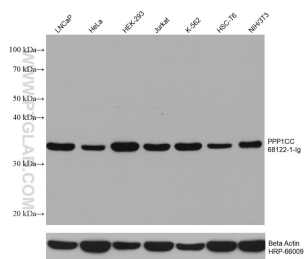
Store at -20°C. Stable for one year after shipment.

**Storage Buffer:**

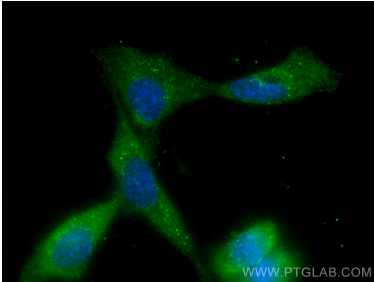
PBS with 0.02% sodium azide and 50% glycerol pH 7.3.

Aliquoting is unnecessary for -20°C storage

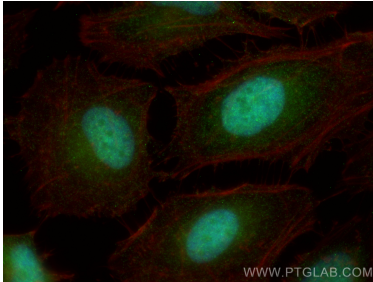
## Selected Validation Data



Various lysates were subjected to SDS PAGE followed by western blot with 68122-1-Ig (PPP1CC antibody) at dilution of 1:8000 incubated at room temperature for 1.5 hours. The membrane was stripped and reblotted with HRP-conjugated Beta Actin Monoclonal antibody (HRP-66009) as loading control.



Immunofluorescent analysis of (-20°C Methanol) fixed C2C12 cells using PPP1CC antibody (68122-1-Ig, Clone: 2G11C3 ) at dilution of 1:800 and CoraLite®488-Conjugated AffiniPure Goat Anti-Mouse IgG(H+L).



Immunofluorescent analysis of (4% PFA) fixed HeLa cells using PPP1CC antibody (68122-1-Ig, Clone: 2G11C3 ) at dilution of 1:800 and CoraLite®488-Conjugated AffiniPure Goat Anti-Mouse IgG(H+L), CL594-Phalloidin (red).