

REEP5 Monoclonal antibody

Catalog Number: 68119-1-Ig

Featured Product

Basic Information

Catalog Number:

68119-1-Ig

Size:

1000 µg/ml

Source:

Mouse

Isotype:

IgG1

Immunogen Catalog Number:

AG6229

GenBank Accession Number:

BC065926

GeneID (NCBI):

7905

UNIPROT ID:

Q00765

Full Name:

receptor accessory protein 5

Calculated MW:

21 kDa

Observed MW:

18 kDa

Purification Method:

Protein A purification

CloneNo.:

1H8D8

Recommended Dilutions:

WB 1:20000-1:100000

IHC 1:5000-1:20000

IF/ICC 1:400-1:1600

Applications

Tested Applications:

WB, IF/ICC, IHC, ELISA

Species Specificity:

Human, pig

Note-IHC: suggested antigen retrieval with TE buffer pH 9.0; (*) Alternatively, antigen retrieval may be performed with citrate buffer pH 6.0

Positive Controls:

WB : HEK-293 cells, pig heart tissue, HeLa cells, LNCaP cells, Jurkat cells, MOLT-4 cells, K-562 cells

IHC : human colon cancer tissue, human liver tissue

IF/ICC : A549 cells,

Background Information

REEP5 (receptor expression-enhancing protein 5), also named as C5orf18, DP1 or TB2, is a membrane protein belonging to DP1/Yop1p protein family. All REEP proteins contain a conserved TB2/DP1, HVA22 domain which is involved in intracellular trafficking and secretion (PMID: 19123125). REEP5 is expressed in circumvallate papillae and testis, and may have the function to influence functional cell surface expression of taste receptors (PMID: 16720576). REEP5 can interact with atlastins (ATL1 and ATL2) which are involved in modulating the structure of ER network (PMID: 19665976).

Storage

Storage:

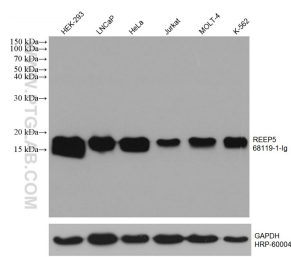
Store at -20°C. Stable for one year after shipment.

Storage Buffer:

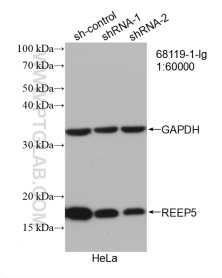
PBS with 0.02% sodium azide and 50% glycerol pH 7.3.

Aliquoting is unnecessary for -20°C storage

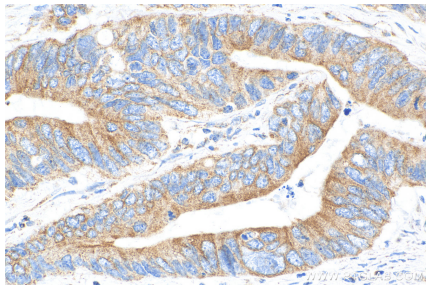
Selected Validation Data



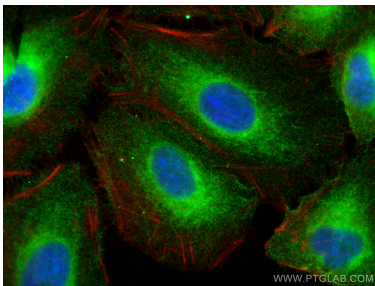
Various lysates were subjected to SDS PAGE followed by western blot with 68119-1-Ig (REEP5 antibody) at dilution of 1:100000 incubated at room temperature for 1.5 hours. The membrane was stripped and reblotted with HRP-conjugated GAPDH Monoclonal antibody (HRP-60004) as loading control.



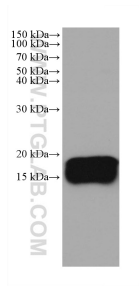
WB result of REEP5 antibody (68119-1-Ig; 1:60000; incubated at room temperature for 1.5 hours) with sh-Control and sh-REEP5 transfected HeLa cells.



Immunohistochemical analysis of paraffin-embedded human colon cancer tissue slide using 68119-1-Ig (REEP5 antibody) at dilution of 1:10000 (under 10x lens). Heat mediated antigen retrieval with Tris-EDTA buffer (pH 9.0).



Immunofluorescent analysis of (4% PFA) fixed A549 cells using REEP5 antibody (68119-1-Ig, Clone: 1H8D8) at dilution of 1:800 and CoraLite®488-Conjugated AffiniPure Goat Anti-Mouse IgG(H+L), CL594-phalloidin (red).



pig heart tissue were subjected to SDS PAGE followed by western blot with 68119-1-Ig (REEP5 antibody) at dilution of 1:100000 incubated at room temperature for 1.5 hours.