

DCT Monoclonal antibody

Catalog Number: 68114-1-Ig

Basic Information

Catalog Number:

68114-1-Ig

Size:

1000 µg/ml

Source:

Mouse

Isotype:

IgG1

Immunogen Catalog Number:

AG26165

GenBank Accession Number:

BC028311

GeneID (NCBI):

1638

UNIPROT ID:

P40126

Full Name:

dopachrome tautomerase
(dopachrome delta-isomerase,
tyrosine-related protein 2)

Calculated MW:

519 aa, 59 kDa

Observed MW:

55-63 kDa

Purification Method:

Protein G purification

CloneNo.:

1B3D4

Recommended Dilutions:

WB 1:1000-1:4000

IF/ICC 1:200-1:800

Applications

Tested Applications:

IF/ICC, WB, ELISA

Species Specificity:

Human, Mouse, Pig

Positive Controls:

WB : A375 cells, HL-60 cells, pig skin tissue, mouse skin tissue, mouse testis tissue

IF/ICC : A549 cells,

Background Information

DCT(L-dopachrome Delta-isomerase) is also named as TYRP2,TRP2 and belongs to the tyrosinase family.human TYRP2 protein has 83% identity and 90% similarity to the mouse sequence and has all the structural characteristics of the tyrosinase protein family, including a signal peptide, 15 conserved cysteine residues, 2 copper-binding domains, and a C-terminal membrane-spanning region(PMID:8206391).

Storage

Storage:

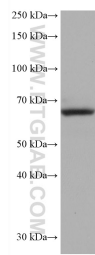
Store at -20°C. Stable for one year after shipment.

Storage Buffer:

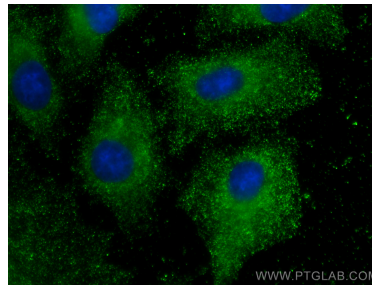
PBS with 0.02% sodium azide and 50% glycerol pH 7.3.

Aliquoting is unnecessary for -20°C storage

Selected Validation Data



A375 cells were subjected to SDS PAGE followed by western blot with 68114-1-Ig (DCT antibody) at dilution of 1:2000 incubated at room temperature for 1.5 hours.



Immunofluorescent analysis of (-20°C Methanol) fixed A549 cells using DCT antibody (68114-1-Ig, Clone: 1B3D4) at dilution of 1:400 and CoraLite®488-Conjugated AffiniPure Goat Anti-Mouse IgG(H+L).